

Sandia

PRODUCTS

Your Ultimate Choice in
Profitable Cleaning Performance!

INDUSTRY LEADERS

in High Performance Cleaning Equipment!



SANDIA PRODUCTS CATALOG



Your Ultimate Choice in
Profitable Cleaning Performance!

CALL US TODAY IF YOU HAVE ANY QUESTIONS,
OR WOULD LIKE TO PLACE AN ORDER!

15571 Container Lane, Huntington Beach, CA 92649
(p) 800-983-5834 | (f) 714-901-8404 | www.sandiaplastics.com

March 2012

OUR COMMITMENT

Our commitment is to consistently provide our customers with design excellence, the highest quality components and powerful performance. We believe that customer service excellence, premier quality and dynamic value, backed up by our “Best Warranty on the Planet” program, are the key ingredients to our customers’ ultimate success. We provide a custom private branding/label program with unlimited color schemes and minimal start-up orders. Our high performance products are built to last with pride in the USA!



CONTENTS

Sniper 12-Gallon Extractors4
 Sniper 12-Gallon Extractor Upgrades 6
 Sniper 12-Gallon Extractor Accessories..... 6
 Sniper 12-Gallon Hard Surface Extractor and Accessories 6

Sniper 24-Gallon Flood Pumper 7

Indy Automotive Line.....7

Sniper 6-Gallon Extractors..... 8
 Sniper 6-Gallon Extractor Accessories 10
 6-Gallon and 12-Gallon Extractor Replacement Parts 10

Spot Extractor Kits..... 12
 2-Gallon and 3-Gallon Spot Extractor Accessories..... 13
 2-Gallon and 3-Gallon Spot Extractor Replacement Parts 14

Raven 10-Quart Backpack Vacuums 15

Raven 6-Quart Backpack Vacuums 16

Hipster 6-Quart Hip Vacuums..... 19
 Replacement Bags for 6-Quart and 10-Quart Backpacks and Hip Vacuums 21
 Accessories/Parts for 6-Quart and 10-Quart Backpacks and Hip Vacuums..... 21
 Sidewinder Wands and Tools for 6-Quart and 10-Quart Backpacks and Hip Vacuums 25

FORCE 14 Upright Vacuum.....26

Air Mover26

Solution Tank26

Warranty.....27

Sniper 12-Gallon Extractors

Warranty: lifetime on body, 2-years on motors, 2-years on 100 psi pump, 1-year on 200, 300, 500 psi pumps, 1-year on electrical components

Sniper 12-Gallon Extractors are built standard as Single Stack (In Series). They are also available in Dual Stack (In Parallel) upon request. Auto Fill and Auto Dump features available upon request for an additional charge. Auto Dump cannot be added to units built in Dual Stack (In Parallel).

100 psi - Light Duty Extractor

100 psi Extractor



80-2100 Sniper 12-Gallon Extractor

Full 12-gallon recovery and solution tanks. 100 psi pump, dual 2-stage vacuum motors, single cord. Semi-pneumatic non-marking wheels for easy transport, built-in induction motor cooling system, made of roto-molded polyethylene for heavy duty applications. *Includes: (1) 25 ft. safety power cord. Hose and wand kit sold separately.*

80-2100-H Sniper 12-Gallon Extractor with Heat

Full 12-gallon recovery and solution tanks, 100 psi pump, dual 2-stage vacuum motors with 2000 Watt in-line heater, dual cord. Semi-pneumatic non-marking wheels for easy transport, built-in induction motor cooling system, made of roto-molded polyethylene for heavy duty applications. *Includes: (2) 25 ft. safety power cords. Hose and wand kit sold separately.*

80-3100 Sniper 12-Gallon Extractor

Full 12-gallon recovery and solution tanks, 100 psi pump, dual 3-stage vacuum motors, dual cord. Semi-pneumatic non-marking wheels for easy transport, built-in induction motor cooling system, made of roto-molded polyethylene for heavy duty applications. *Includes: (2) 25 ft. safety power cords. Hose and wand kit sold separately.*

80-3100-H Sniper 12-Gallon Extractor with Heat

Full 12-gallon recovery and solution tanks, 100 psi pump, dual 3-stage vacuum motors with 2000 Watt in-line heater, dual cord. Semi-pneumatic non-marking wheels for easy transport, built-in induction motor cooling system, made of roto-molded polyethylene for heavy duty applications. *Includes: (2) 25 ft. safety power cords. Hose and wand kit sold separately.*

200 psi - Light Duty Extractor

200 psi Extractor



80-2200 Sniper 12-Gallon Extractor

Full 12-gallon recovery and solution tanks, 200 psi adjustable pump, dual 2-stage vacuum motors, single cord. Semi-pneumatic non-marking wheels for easy transport, built-in induction motor cooling system, made of roto-molded polyethylene for heavy duty applications. *Includes: (1) 25 ft. safety power cord. Hose and wand kit sold separately.*

80-2200-H Sniper 12-Gallon Extractor with Heat

Full 12-gallon recovery and solution tanks, 200 psi adjustable pump, dual 2-stage vacuum motors with 2000 Watt in-line heater, dual cord. 140 in. water lift and 97 CFM. Semi-pneumatic non-marking wheels for easy transport, built-in induction motor cooling system, made of roto-molded polyethylene for heavy duty applications. *Includes: (2) 25 ft. safety power cords. Hose and wand kit sold separately.*

80-3200 Sniper 12-Gallon Extractor

Full 12-gallon recovery and solution Tanks, 200 psi adjustable pump, dual 3-stage vacuum motors, dual cord. Semi-pneumatic non-marking wheels for easy transport, built-in induction motor cooling system, made of roto-molded polyethylene for heavy duty applications. *Includes: (2) 25 ft. safety power cords. Hose and wand kit sold separately.*

80-3200-H Sniper 12-Gallon Extractor with Heat

Full 12-gallon recovery and solution tanks, 200 psi adjustable pump, dual 3-stage vacuum motors with 2000 Watt in-line heater, dual cord. Semi-pneumatic non-marking wheels for easy transport, built-in induction motor cooling system, made of roto-molded polyethylene for heavy duty applications. *Includes: (2) 25 ft. safety power cords. Hose and wand kit sold separately.*

Sniper 12-Gallon Extractors *Continued*

Warranty: lifetime on body, 2-years on motors, 2-years on 100 psi pump, 1-year on 200, 300, 500 psi pumps, 1-year on electrical components

300 psi Extractor



300 psi - Medium Duty Extractor

80-2300 Sniper 12-Gallon Extractor

Full 12-gallon recovery and solution tanks, 300 psi adjustable pump, dual 2-stage vacuum motors, single cord. Semi-pneumatic non-marking wheels for easy transport, built-in induction motor cooling system, made of roto-molded polyethylene for heavy duty applications. **Includes: (1) 25 ft. safety power cord. Hose and wand kit sold separately.**

80-2300-H Sniper 12-Gallon Extractor with Heat

Full 12-gallon recovery and solution tanks, 300 psi adjustable pump, dual 2-stage vacuum motors with 2000 Watt in-line heater, dual cord. Semi-pneumatic non-marking wheels for easy transport, built-in induction motor cooling system, made of roto-molded polyethylene for heavy duty applications. **Includes: (2) 25 ft. safety power cords. Hose and wand kit sold separately.**

80-3300 Sniper 12-Gallon Extractor

Full 12-gallon recovery and solution tanks, 300 psi adjustable pump, dual 3-stage vacuum motors, dual cord. Semi-pneumatic non-marking wheels for easy transport, built-in induction motor cooling system, made of roto-molded polyethylene for heavy duty applications. **Includes: (2) 25 ft. safety power cords. Hose and wand kit sold separately.**

80-3300-H Sniper 12-Gallon Extractor with Heat

Full 12-gallon recovery and solution tanks, 300 psi adjustable pump, dual 3-stage vacuum motors with 2000 Watt in-line heater, dual cord. 205 in. water lift and 99 CFM. Semi-pneumatic non-marking wheels for easy transport, built-in induction motor cooling system, made of roto-molded polyethylene for heavy duty applications. **Includes: (2) 25 ft. safety power cords. Hose and wand kit sold separately.**

500 psi Extractor



500 psi - Heavy Duty Extractor

80-2500 Sniper 12-Gallon Extractor

Full 12-gallon recovery and solution tanks, 500 psi adjustable pump, dual 2-stage vacuum motors, single cord. Semi-pneumatic non-marking wheels for easy transport, built-in induction motor cooling system, made of roto-molded polyethylene for heavy duty applications. **Includes: (1) 25 ft. safety power cord. Hose and wand kit sold separately.**

80-2500-H Sniper 12-Gallon Extractor with Heat

Full 12-gallon recovery and solution tanks, 500 psi adjustable pump, dual 2-stage vacuum motors with 2000 Watt in-line heater, dual cord. Semi-pneumatic non-marking wheels for easy transport, built-in induction motor cooling system, made of roto-molded polyethylene for heavy duty applications. **Includes: (2) 25 ft. safety power cords. Hose and wand kit sold separately.**

80-3500 Sniper 12-Gallon Extractor

Full 12-gallon recovery and solution tanks, 500 psi adjustable pump, dual 3-stage vacuum motors, dual cord. 205 in. water lift and 99 CFM. Semi-pneumatic non-marking wheels for easy transport, built-in induction motor cooling system, made of roto-molded polyethylene for heavy duty applications. **Includes: (2) 25 ft. safety power cords. Hose and wand kit sold separately.**

80-3500-H Sniper 12-Gallon Extractor with Heat

Full 12-gallon recovery and solution tanks, 500 psi adjustable pump, dual 3-stage vacuum motors with 2000 Watt in-line heater, dual cord. Semi-pneumatic non-marking wheels for easy transport, built-in induction motor cooling system, made of roto-molded polyethylene for heavy duty applications. **Includes: (2) 25 ft. safety power cords. Hose and wand kit sold separately.**

Sniper 12-Gallon Extractor Upgrades

Auto Fill and Auto Dump features available upon request for an additional charge. Factory installed options available on new extractors only and must be noted on purchase order. Auto Dump cannot be added to units built in Dual Stack (In Parallel).



80-1000
Auto Fill / Auto Dump Upgrade

80-1001
Auto Dump Upgrade Only

80-1002
Auto Fill Upgrade Only

Sniper 12-Gallon Extractor Accessories



10-0501
4 in. Stainless Steel
Hand Tool, Required for
Machines with Heat



10-0861
Stainless Steel Dual Jet
12 in. S-Bend Wand



80-0500
25 ft. Vacuum and
Solution Hoses and
Stainless Steel Dual Jet
Wand Kit



80-0502
25 ft. Solution Hose
Assembly



80-0503
25 ft. Vacuum Hose
Assembly

Sniper 12-Gallon Hard Surface Extractor and Accessories

Warranty: lifetime on body, 2-years on motors, 1-year on pump, 1-year on electrical components

1200 psi Hard Surface Extractor

80-5000 Sniper 12-Gallon Hard Surface Extractor

1200 psi adjustable pump, (1) 3-stage motor and (1) 2-stage motor, 170 in. water lift, 99 CFM, dual cord. Roto-molded polyethylene construction for heavy duty applications. *Includes: clear view in-line filter, 50 ft. auto fill hose, 50 ft. auto dump hose, (2) 25 ft. safety power cords. Hard surface tools sold separately.*



10-0864
15 in. Hard Surface
Turbo Brush Tool



10-0874
7 in. Hard Surface Turbo
Brush Tool (5 in. Inside
Diameter)

Sniper 24-Gallon Flood Pumper

Warranty: lifetime on body, 2-years on motor, 1-year on electrical components

Sniper 24-Gallon Flood Pumper

80-6000 Sniper 24-Gallon Flood Pumper

24-gallon capacity. Dual 3-stage vacuum motors, 13 Amps, 170 CFM. Dual pumping system with electronic overflow protection, 100 in. water lift and 10.5 GPM. *Includes: (1) 25 ft. safety power cord, (1) 25-foot vacuum hose and (1) 25-foot auto dump hose. Wand and tools sold separately.*



10-0029

Aluminum Vac Wand, 2 Piece, 56 in. 2-Bend Wand with 3 Piece Head Kit



10-0170

14 in. Squeegee Floor Tool



10-0800

Pump for Flood Pumper



10-0825

Motor for Flood Pumper

Indy Automotive Line

Warranty: lifetime on body, 2-years on motor, 2-years on pump, 1-year on electrical components
Includes Hoses and hand tools

Sniper 12-Gallon Indy Automotive Extractor with Heat

12-Gallon Extractor

80-4000-H Sniper 12-Gallon Indy Automotive Extractor with Heat

Full 12-gallon recovery and solution tanks. Single 3-stage, 1258 Watt, 99 CFM vacuum motor. 100 psi pump. 1200 Watt in-line heater. 115 V and 117 in. water lift. Semi-pneumatic non-marking wheels for easy transport, made of roto-molded polyethylene for heavy duty applications. *Includes: (1) 25 ft. safety power cord, 25 ft. vacuum and solution hoses and 4 in. stainless steel hand tool.*



6-Gallon Extractor

Sniper 6-Gallon Indy Automotive Extractor with Heat

86-4000-H Sniper 6-Gallon Indy Automotive Extractor with Heat

Full 6-gallon recovery and solution tanks. Single 3-stage, 1258 Watt, 99 CFM vacuum motor. 100 psi pump. 1200 Watt in-line heater. 115 V and 117 in. water lift. Semi-pneumatic non-marking wheels for easy transport, made of roto-molded polyethylene for heavy duty applications. *Includes: (1) 25 ft. safety power cord, 15 ft. vacuum and solution hoses and 4 in. stainless steel hand tool.*



Indy Automotive Line *Continued*

Warranty: lifetime on body, 2-years on motor, 2-years on pump, 1-year on electrical components
Includes Hoses and hand tools

3-Gallon Extractor



Sniper 3-Gallon Indy Automotive Extractor with Heat

50-7000 Sniper 3-Gallon Indy Automotive Extractor with Heat

Full 3-gallon recovery and solution tanks. Single 2-stage, 804 Watt, 100 CFM vacuum motor. 55 psi pump. 1200 Watt in-line heater. 115 V and 117 in. water lift. Semi-pneumatic non-marking wheels for easy transport, made of roto-molded polyethylene for heavy duty applications. *Includes: (1) 25 ft. safety power cord, 15 ft. vacuum and solution hoses and 4 in. stainless steel hand tool.*

Sniper 6-Gallon Extractors

Warranty: lifetime on body, 2-years on motors, 2-years on 100 psi pump, 1-year on 200, 300, 500 psi pumps, 1-year on electrical components

100 psi Extractor



100 psi - Light Duty Extractor

86-R3100 Sniper 6-Gallon Extractor

Full 6-gallon recovery and solution tanks, 100 psi pump, single 3-stage high output vacuum motor, single cord. Includes semi-pneumatic non-marking wheels for easy transport, built-in induction motor cooling system, made of roto-molded polyethylene for heavy duty applications. *Includes: (1) 25 ft. safety power cord. Hose and wand kit sold separately.*

86-R3100-H Sniper 6-Gallon Extractor with Heat

Full 6-gallon recovery and solution tanks, 100 psi pump, single 3-stage high output vacuum motor with 2000 Watt in-line heater, single cord. Includes semi-pneumatic non-marking wheels for easy transport, built-in induction motor cooling system, made of roto-molded polyethylene for heavy duty applications. *Includes: (1) 25 ft. safety power cord. Hose and wand kit sold separately.*

86-2100 Sniper 6-Gallon Extractor

Full 6-gallon recovery and solution tanks, 100 psi pump, dual 2-stage vacuum motors, single cord. Includes semi-pneumatic non-marking wheels for easy transport, built-in induction motor cooling system, made of roto-molded polyethylene for heavy duty applications. *Includes: (1) 25 ft. safety power cord. Hose and wand kit sold separately.*

86-2100-H Sniper 6-Gallon Extractor with Heat

Full 6-gallon recovery and solution tanks, 100 psi pump, dual 2-stage vacuum motors with 2000 Watt in-line heater, dual cord. Includes semi-pneumatic non-marking wheels for easy transport, built-in induction motor cooling system, made of roto-molded polyethylene for heavy duty applications. *Includes: (2) 25 ft. safety power cords. Hose and wand kit sold separately.*

86-3100 Sniper 6-Gallon Extractor

Full 6-gallon recovery and solution tanks, 100 psi pump, dual 3-stage vacuum motors, dual cord. Includes semi-pneumatic non-marking wheels for easy transport, built-in induction motor cooling system, made of roto-molded polyethylene for heavy duty applications. *Includes: (2) 25 ft. safety power cords. Hose and wand kit sold separately.*

86-3100-H Sniper 6-Gallon Extractor with Heat

Full 6-gallon recovery and solution tanks, 100 psi pump, dual 3-stage vacuum motors with 2000 Watt in-line heater, dual cord. Includes semi-pneumatic non-marking wheels for easy transport, built-in induction motor cooling system, made of roto-molded polyethylene for heavy duty applications. *Includes: (2) 25 ft. safety power cords. Hose and wand kit sold separately.*

Sniper 6-Gallon Extractors *Continued*

Warranty: lifetime on body, 2-years on motors, 2-years on 100 psi pump, 1-year on 200, 300, 500 psi pumps, 1-year on electrical components

200 psi - Light Duty Extractor

200 psi Extractor



86-2200 Sniper 6-Gallon Extractor

Full 6-gallon recovery and solution tanks, 200 psi pump, dual 2-stage vacuum motors, single cord. Includes semi-pneumatic non-marking wheels for easy transport, built-in induction motor cooling system, made of roto-molded polyethylene for heavy duty applications. *Includes: (1) 25 ft. safety power cord. Hose and wand kit sold separately.*

86-2200-H Sniper 6-Gallon Extractor with Heat

Full 6-gallon recovery and solution tanks, 200 psi pump, dual 2-stage vacuum motors with 2000 Watt in-line heater, dual cord. Semi-pneumatic non-marking wheels for easy transport, built-in induction motor cooling system, made of roto-molded polyethylene for heavy duty applications. *Includes: (2) 25 ft. safety power cords. Hose and wand kit sold separately.*

86-3200 Sniper 6-Gallon Extractor

Full 6-gallon recovery and solution tanks, 200 psi pump, dual 3-stage vacuum motors, dual cord. 205 in. water lift and 99 CFM. Includes semi-pneumatic non-marking wheels for easy transport, built-in induction motor cooling system, made of roto-molded polyethylene for heavy duty applications. *Includes: (2) 25 ft. safety power cords. Hose and wand kit sold separately.*

86-3200-H Sniper 6-Gallon Extractor with Heat

Full 6-gallon recovery and solution Tanks, 200 psi pump, dual 3-stage vacuum motors with 2000 Watt in-line heater, dual cord. Includes semi-pneumatic non-marking wheels for easy transport, built-in induction motor cooling system, made of roto-molded polyethylene for heavy duty applications. *Includes: (2) 25 ft. safety power cords. Hose and wand kit sold separately.*

300 psi - Medium Duty Extractor

300 psi Extractor



86-2300 Sniper 6-Gallon Extractor

Full 6-gallon recovery and solution tanks, 300 psi adjustable pump, dual 2-stage vacuum motors, single cord. Includes semi-pneumatic non-marking wheels for easy transport, built-in induction motor cooling system, made of roto-molded polyethylene for heavy duty applications. *Includes: (1) 25 ft. safety power cord. Hose and wand kit sold separately.*

86-2300-H Sniper 6-Gallon Extractor with Heat

Full 6-gallon recovery and solution tanks, 300 psi adjustable pump, dual 2-stage vacuum motors with 2000 Watt in-line heater, dual cord. Includes semi-pneumatic non-marking wheels for easy transport, built-in induction motor cooling system, made of roto-molded polyethylene for heavy duty applications. *Includes: (2) 25 ft. safety power cords. Hose and wand kit sold separately.*

86-3300 Sniper 6-Gallon Extractor

Full 6-gallon recovery and solution tanks, 300 psi adjustable pump, dual 3-stage vacuum motors, dual cord. Includes semi-pneumatic non-marking wheels for easy transport, built-in induction motor cooling system, made of roto-molded polyethylene for heavy duty applications. *Includes: (2) 25 ft. safety power cords. Hose and wand kit sold separately.*

86-3300-H Sniper 6-Gallon Extractor with Heat

Full 6-gallon recovery and solution tanks, 300 psi adjustable pump, dual 3-stage vacuum motors with 2000 Watt in-line heater, dual cord. 205 in. water lift and 99 CFM. Includes semi-pneumatic non-marking wheels for easy transport, built-in induction motor cooling system, made of roto-molded polyethylene for heavy duty applications. *Includes: (2) 25 ft. safety power cords. Hose and wand kit sold separately.*

Sniper 6-Gallon Extractor Accessories



10-0501
4 in. Stainless Steel
Hand Tool, Required for
Machines with Heat



10-0502
Jet for 4 in. Stainless Steel
Hand Tool



10-0504
Valve for 4 in. Stainless
Steel Hand Tool



50-1008-A
15 ft. Vacuum Hose
Assembly



80-8007-A
15 ft. Solution Hose
Assembly



80-8008
12 in. Stainless Steel
Single Jet Single Bend
Wand



80-8009-A
Stainless Steel Single
Jet Single Bend Wand
with 12 in. Head, 15 ft.
Vacuum and Solution
Hoses



80-8010
4 in. Stainless Steel Hand
Tool with 15 ft. Vacuum
and Solution Hoses

6-Gallon and 12-Gallon Extractor Replacement Parts



10-0803
Splash-Proof Switch for
Vacuum Pump
(No Heat)



10-0803-H
Splash-Proof Lighted
Heater Switch



10-0804
6 in. Hatch Cover for
Extractor with T-Handle



10-0804-A
Gasket for Hatch Cover



10-0805
Dump Valve



10-0810
3-Stage Extractor Motor,
120 V, 5.7 in. Tangential
Bypass, 117.4 in. Lift,
UL/CSA Certified



10-0811
2-Stage Extractor Motor,
120 V, 5.7 in. Tangential
Bypass, 107.8 in. Lift,
UL/CSA Certified



10-0812
100 psi Pump



10-0814
Sensor for Heater

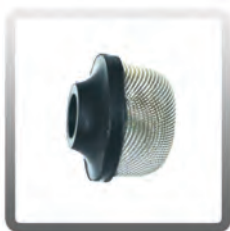


10-0814-B
Manual Sensor for Heater

6-Gallon and 12-Gallon Extractor Replacement Parts *Continued*



10-0822
Intake/Exhaust Grate



10-0845
1/4 in. Strainer



10-0860
25 ft. Extension Cord for
Extractors



10-0868
1/4 in. Female Quick
Disconnect



10-0869
200 psi Pump



10-0870
1/4 in. Male Quick
Disconnect



10-1030-S2
2-Stage Motor Gasket



10-1030-S3
3-Stage Motor Gasket



10-1500-A
1000 Watt Heater
Element



10-1500-B
600 Watt Heater Element



80-0007
#1 Jet for Extractor Wand
(10-0861)



80-0007-A
Tip for #1 Jet for Extractor
Wand (10-0861)



80-0012
Shut-Off Assembly



80-0016
500 psi Pump



80-0016-RA
500 psi Pump Rebuild
Kit A Plunger and Seals



80-0016-RB
500 psi Pump Rebuild
Kit B Valve and Seals



80-0016-RC
500 psi Pump Rebuild
Kit C Bearing



80-0080
300 psi Pump for
Extractor



80-0080-RA
300 psi Pump Rebuild
Kit A Plunger and Seals



80-0080-RB
300 psi Pump Rebuild
Kit B Valve and Seals

6-Gallon and 12-Gallon Extractor Replacement Parts *Continued*



80-0080-RC
300 psi Pump Rebuild
Kit C Bearing



80-0101-M
1/4 in. Male Brass Check
Valve



80-0112
1200 psi Pump Kit for
1200 psi Extractor Only



80-0112-RA
1200 psi Pump Rebuild
Kit A Plunger and Seals



80-0112-RB
1200 psi Pump Rebuild
Kit B Valve and Seals



80-0112-RC
1200 psi Pump Rebuild
Kit C Bearing



80-0505
Valve for Single and Dual
Jet Extractor Wands



80-0505-A
Valve Repair Kit for Valve
on Single and Dual Jet
Wands



T-A001
Cooling Ducting

Spot Extractor Kits

Warranty: lifetime on body, 5-years on motor, pump and electrical components

3-Gallon Spot Extractor Kits



50-1000
Spot-Xtract 3-Gallon
Extractor with 4 in. Clear
View Plastic Hand Tool



50-1001
Spot-Xtract 3-Gallon
Extractor with 4 in.
Stainless Steel Hand Tool



50-1002
Spot-Xtract 3-Gallon
Extractor, NO hoses, NO
Hand Tool



50-3000
Super Spot-Xtract
3-Gallon Extractor with
4 in. Clear View Plastic
Hand Tool



50-3001
Super Spot-Xtract
3-Gallon Extractor with
4 in. Stainless Steel
Tool

Spot Extractor Kits *Continued*

Warranty: lifetime on body, 5-years on motor, pump and electrical components

2-Gallon Spot Extractor Kit



50-2000

Spot-Xtract 2-Gallon Extractor with 4 in. Clear View Plastic Hand Tool

3-Gallon Spot Extractor with Heat Kit



50-4000

Spot-Xtract 3-Gallon Extractor with Heater, 15 ft. Hoses and 4 in. Stainless Steel Hand Tool

2-Gallon and 3-Gallon Spot Extractor Accessories



10-0401-E

4 in. Clear View Plastic Hand Tool with External 7 ft. Hoses for 3-Gallon Spotter WITHOUT Heat



10-0401-I

4 in. Clear View Plastic Hand Tool with Internal 7 ft. Hoses for 3-Gallon Spotter WITHOUT Heat



10-0450

7 ft. Vacuum and Solution Hoses (Internal)



10-0450-A

7 ft. Vacuum and Solution Hoses (External)



10-0455

2-Piece Stainless Steel Wand, 9 in. Head



10-0500-E

4 in. Clear View Plastic Hand Tool with Jet Set for External hoses for Machines WITHOUT Heat



10-0500-I

4 in. Clear View Plastic Hand Tool with Jet Set for Internal hoses for Machines WITHOUT Heat



10-0501

4 in. Stainless Steel Hand Tool, for use with Machines with or without Heat



10-0503

4 in. Stainless Steel Hand Tool and 7 ft. Vacuum and Solution Hoses



80-8010

4 in. Stainless Steel Hand Tool and 15 ft. Vacuum and Solution Hoses

2-Gallon and 3-Gallon Spot Extractor Replacement Parts



10-0224
1-Piece, 2-Bend
Aluminum Wand



10-0300
55 psi Pump for 2-Gallon
and 3-Gallon Spotters



10-0302
5 in. Hatch Cover for
2-Gallon Spotter



10-0302-A
5 in. Gasket for Hatch
Cover for 2-Gallon and
3-Gallon Spotters



10-0304
Spotter Cap and Float
Assembly for 3-Gallon
Spotter and Recovery
Tank Hatch for 2-Gallon
Spotter



10-0354
3-Gallon Spotter Motor



10-0366
3-Gallon Super Spotter
Motor



10-0447
2-Gallon Spotter Motor



10-0499-A
Tee Jet for 4 in. Clear View
Upholstery Hand Tool



10-0504
Valve for Stainless Steel
Hand Tool for Part
Number 10-0501



10-0504-A
Repair Kit for 4 in.
Stainless Steel Hand Tool



10-0507
8 in. Black Hose for 4 in.
Stainless Steel Hand Tool



10-1030
Spotter Motor Gasket for
2-Gallon and 3-Gallon
Spotters



80-8011
15 ft. Vacuum and
Solution Hose Set

Raven 10-Quart Backpack Vacuums

Warranty: lifetime on body, 5-years on motor and electrical components

Super Raven



Super Raven 10-Quart Backpacks

20-1000 Super Raven 10-Quart Backpack

1.5 HP, 1-stage, 1340 Watt vacuum motor. 11.5 Amps, 115 Volts, 150 CFM, height 23 in., weight 10 lbs. Made of roto-molded polyethylene, ergonomic backrest and superior airflow design with quad level filtration. Doubles as a blower! *Includes: machine only.*

20-1001 Super Raven 10-Quart Backpack with 5 Piece Standard Tool Kit

1.5 HP, 1-stage, 1340 Watt vacuum motor. 11.5 Amps, 115 Volts, 150 CFM, height 23 in., weight 10 lbs. Made of roto-molded polyethylene, ergonomic backrest and superior airflow design with quad level filtration. Doubles as a blower! *Includes: 59 in. 2-piece 2-bend aluminum wand, 14 in. scalloped floor tool, 17 in. crevice tool, 5 in. upholstery tool and 3 in. dust brush.*

20-1002 Super Raven 10-Quart Backpack with Power Head Accessory

1.5 HP, 1-stage, 1340 Watt vacuum motor. 11.5 Amps, 115 Volts, 150 CFM, height 23 in., weight 10 lbs. Made of roto-molded polyethylene, ergonomic backrest and superior airflow design with quad level filtration. Doubles as a blower! *Includes: power head accessory.*

20-1003 Super Raven 10-Quart Backpack with 5 Piece Standard Tool Kit and Power Head Accessory

1.5 HP, 1-stage, 1340 Watt vacuum motor. 11.5 Amps, 115 Volts, 150 CFM, height 23 in., weight 10 lbs. Made of roto-molded polyethylene, ergonomic backrest and superior airflow design with quad level filtration. Doubles as a blower! *Includes: power head accessory, 59 in. 2-piece 2-bend aluminum wand, 14 in. scalloped floor tool, 17 in. crevice tool, 5 in. upholstery tool and 3 in. dust brush.*

WHISPER Raven



WHISPER Raven 10-Quart Backpacks

20-2000 WHISPER Raven 10-Quart Backpack

1.5 HP, 2-stage, 1122 Watt vacuum motor. 9.6 Amps, 115 Volts, 120 CFM, height 23 in., weight 11 lbs. Made of roto-molded polyethylene, ergonomic backrest and superior airflow design with quad level filtration. Doubles as a blower! *Includes: machine only.*

20-2001 WHISPER Raven 10-Quart Backpack with 5 Piece Standard Tool Kit

1.5 HP, 2-stage, 1122 Watt vacuum motor. 9.6 Amps, 115 Volts, 120 CFM, height 23 in., weight 11 lbs. Made of roto-molded polyethylene, ergonomic backrest and superior airflow design with quad level filtration. Doubles as a blower! *Includes: 59 in. 2-piece 2-bend aluminum wand, 14 in. scalloped floor tool, 17 in. crevice tool, 5 in. upholstery tool and 3 in. dust brush.*

20-2002 WHISPER Raven 10-Quart Backpack with Power Head Accessory

1.5 HP, 2-stage, 1122 Watt vacuum motor. 9.6 Amps, 115 Volts, 120 CFM, height 23 in., weight 11 lbs. Made of roto-molded polyethylene, ergonomic backrest and superior airflow design with quad level filtration. Doubles as a blower! *Includes: power head accessory.*

20-2003 WHISPER Raven 10-Quart Backpack with 5 Piece Standard Tool Kit and Power Head Accessory

1.5 HP, 2-stage, 1122 Watt vacuum motor. 9.6 Amps, 115 Volts, 120 CFM, height 23 in., weight 11 lbs. Made of roto-molded polyethylene, ergonomic backrest and superior airflow design with quad level filtration. Doubles as a blower! *Includes: power head accessory, 59 in. 2-piece 2-bend aluminum wand, 14 in. scalloped floor tool, 17 in. crevice tool, 5 in. upholstery tool and 3 in. dust brush.*

Raven 10-Quart Backpack Vacuums *Continued*

Warranty: lifetime on body, 5-years on motor and electrical components

HEPA Raven 10-Quart Backpacks

HEPA Raven



20-3000 HEPA Raven 10-Quart Backpack

1.5 HP, 1-stage, 1340 Watt vacuum motor. 11.5 Amps, 115 Volts, 150 CFM, height 23 in., weight 10.5 lbs. HEPA filtration including HEPA bag and HEPA motor filter. Filters 99.97% of airborne particles 0.3 microns or larger. Made of roto-molded polyethylene, ergonomic backrest and superior airflow design with quad level filtration. Doubles as a blower! *Includes: machine only.*

20-3001 HEPA Raven 10-Quart Backpack with 5 Piece Standard Tool Kit

1.5 HP, 1-stage, 1340 Watt vacuum motor. 11.5 Amps, 115 Volts, 150 CFM, height 23 in., weight 10.5 lbs. HEPA filtration including HEPA bag and HEPA motor filter. Filters 99.97% of airborne particles 0.3 microns or larger. Made of roto-molded polyethylene, ergonomic backrest and superior airflow design with quad level filtration. Doubles as a blower! *Includes: 59 in. 2-piece 2-bend aluminum wand, 14 in. scalloped floor tool, 17 in. crevice tool, 5 in. upholstery tool and 3 in. dust brush.*

20-3002 HEPA Raven 10-Quart Backpack with Power Head Accessory

1.5 HP, 1-stage, 1340 Watt vacuum motor. 11.5 Amps, 115 Volts, 150 CFM, height 23 in., weight 10.5 lbs. HEPA filtration including HEPA bag and HEPA motor filter. Filters 99.97% of airborne particles 0.3 microns or larger. Made of roto-molded polyethylene, ergonomic backrest and superior airflow design with quad level filtration. Doubles as a blower! *Includes: power head accessory.*

20-3003 HEPA Raven 10-Quart Backpack with 5 Piece Standard Tool Kit and Power Head Accessory

1.5 HP, 1-stage, 1340 Watt vacuum motor. 11.5 Amps, 115 Volts, 150 CFM, height 23 in., weight 10.5 lbs. HEPA filtration including HEPA bag and HEPA motor filter. Filters 99.97% of airborne particles 0.3 microns or larger. Made of roto-molded polyethylene, ergonomic backrest and superior airflow design with quad level filtration. Doubles as a blower! *Includes: power head accessory, 59 in. 2-piece 2-bend aluminum wand, 14 in. scalloped floor tool, 17 in. crevice tool, 5 in. upholstery tool and 3 in. dust brush.*



Raven 6-Quart Backpack Vacuums

Warranty: lifetime on body, 5-years on motor and electrical components

Avenger Raven

Avenger Raven 6-Quart Backpacks

70-1000 Avenger Raven 6-Quart Backpack

1.5 HP, 1-stage, 802 Watt vacuum motor. 6.8 Amps, 115 Volt, 112 CFM, height 23 in., weight 9 lbs. Made of roto-molded polyethylene, ergonomic backrest and superior airflow design with quad level filtration. Doubles as a blower! *Includes: machine only.*

70-1001 Avenger Raven 6-Quart Backpack with 5 Piece Standard Tool Kit

1.5 HP, 1-stage, 802 Watt vacuum motor. 6.8 Amps, 115 Volt, 112 CFM, height 23 in., weight 9 lbs. Made of roto-molded polyethylene, ergonomic backrest and superior airflow design with quad level filtration. Doubles as a blower! *Includes: 59 in. 2-piece 2-bend aluminum wand, 14 in. scalloped floor tool, 17 in. crevice tool, 5 in. upholstery tool and 3 in. dust brush.*

70-1002 Avenger Raven 6-Quart Backpack with Power Head Accessory

1.5 HP, 1-stage, 802 Watt vacuum motor. 6.8 Amps, 115 Volt, 112 CFM, height 23 in., weight 9 lbs. Made of roto-molded polyethylene, ergonomic backrest and superior airflow design with quad level filtration. Doubles as a blower! *Includes: power head accessory.*

70-1003 Avenger Raven 6-Quart Backpack with 5 Piece Standard Tool Kit and Power Head Accessory

1.5 HP, 1-stage, 802 Watt vacuum motor. 6.8 Amps, 115 Volt, 112 CFM, height 23 in., weight 9 lbs. Made of roto-molded polyethylene, ergonomic backrest and superior airflow design with quad level filtration. Doubles as a blower! *Includes: power head accessory, 59 in. 2-piece 2-bend aluminum wand, 14 in. scalloped floor tool, 17 in. crevice tool, 5 in. upholstery tool and 3 in. dust brush.*



Raven 6-Quart Backpack Vacuums *Continued*

Warranty: lifetime on body, 5-years on motor and electrical components

Super Raven



Super Raven 6-Quart Backpacks

70-2000 Super Raven 6-Quart Backpack

1.5 HP, 1-stage, 1340 Watt vacuum motor. 11.5 Amps, 115 Volt, 150 CFM, height 23 in., weight 9 lbs. Made of roto-molded polyethylene, ergonomic backrest and superior airflow design with quad level filtration. Doubles as a blower! *Includes: machine only.*

70-2001 Super Raven 6-Quart Backpack with 5 Piece Standard Tool Kit

1.5 HP, 1-stage, 1340 Watt vacuum motor. 11.5 Amps, 115 Volt, 150 CFM, height 23 in., weight 9 lbs. Made of roto-molded polyethylene, ergonomic backrest and superior airflow design with quad level filtration. Doubles as a blower! *Includes: 59 in. 2-piece 2-bend aluminum wand, 14 in. scalloped floor tool, 17 in. crevice tool, 5 in. upholstery tool and 3 in. dust brush.*

70-2002 Super Raven 6-Quart Backpack with Power Head Accessory

1.5 HP, 1-stage, 1340 Watt vacuum motor. 11.5 Amps, 115 Volt, 150 CFM, height 23 in., weight 9 lbs. Made of roto-molded polyethylene, ergonomic backrest and superior airflow design with quad level filtration. Doubles as a blower! *Includes: power head accessory.*

70-2003 Super Raven 6-Quart Backpack with 5 Piece Standard Tool Kit and Power Head Accessory

1.5 HP, 1-stage, 1340 Watt vacuum motor. 11.5 Amps, 115 Volt, 150 CFM, height 23 in., weight 9 lbs. Made of roto-molded polyethylene, ergonomic backrest and superior airflow design with quad level filtration. Doubles as a blower! *Includes: power head accessory, 59 in. 2-piece 2-bend aluminum wand, 14 in. scalloped floor tool, 17 in. crevice tool, 5 in. upholstery tool and 3 in. dust brush.*

WHISPER Raven



WHISPER Raven 6-Quart Backpacks

70-3000 WHISPER Raven 6-Quart Backpack

1.5 HP, 2-stage, 1122 Watt vacuum motor. 9.6 Amps, 115 Volt, 120 CFM, height 23 in., weight 10 lbs. Made of roto-molded polyethylene, ergonomic backrest and superior airflow design with quad level filtration. Doubles as a blower! *Includes: machine only.*

70-3001 WHISPER Raven 6-Quart Backpack with 5 Piece Standard Tool Kit

1.5 HP, 2-stage, 1122 Watt vacuum motor. 9.6 Amps, 115 Volt, 120 CFM, height 23 in., weight 10 lbs. Made of roto-molded polyethylene, ergonomic backrest and superior airflow design with quad level filtration. Doubles as a blower! *Includes: 59 in. 2-piece 2-bend aluminum wand, 14 in. scalloped floor tool, 17 in. crevice tool, 5 in. upholstery tool and 3 in. dust brush.*

70-3002 WHISPER Raven 6-Quart Backpack with Power Head Accessory

1.5 HP, 2-stage, 1122 Watt vacuum motor. 9.6 Amps, 115 Volt, 120 CFM, height 23 in., weight 10 lbs. Made of roto-molded polyethylene, ergonomic backrest and superior airflow design with quad level filtration. Doubles as a blower! *Includes: power head accessory.*

70-3003 WHISPER Raven 6-Quart Backpack with 5 Piece Standard Tool Kit and Power Head Accessory

1.5 HP, 2-stage, 1122 Watt vacuum motor. 9.6 Amps, 115 Volt, 120 CFM, height 23 in., weight 10 lbs. Made of roto-molded polyethylene, ergonomic backrest and superior airflow design with quad level filtration. Doubles as a blower! *Includes: power head accessory, 59 in. 2-piece 2-bend aluminum wand, 14 in. scalloped floor tool, 17 in. crevice tool, 5 in. upholstery tool and 3 in. dust brush.*

Raven 6-Quart Backpack Vacuums *Continued*

Warranty: lifetime on body, 5-years on motor and electrical components

HEPA Raven



HEPA Raven 6-Quart Backpacks

70-4000 HEPA Raven 6-Quart Backpack

1.5 HP, 1-stage, 1340 Watt vacuum motor. 11.5 Amps, 115 Volt, 150 CFM, height 23 in., weight 9.5 lbs. HEPA filtration including HEPA bag and HEPA motor filter. Filters 99.97% of airborne particles 0.3 microns or larger. Made of roto-molded polyethylene, ergonomic backrest and superior airflow design with quad level filtration. Doubles as a blower! *Includes: machine only.*

70-4001 HEPA Raven 6-Quart Backpack with 5 Piece Standard Tool Kit

1.5 HP, 1-stage, 1340 Watt vacuum motor. 11.5 Amps, 115 Volt, 150 CFM, height 23 in., weight 9.5 lbs. HEPA filtration including HEPA bag and HEPA motor filter. Filters 99.97% of airborne particles 0.3 microns or larger. Made of roto-molded polyethylene, ergonomic backrest and superior airflow design with quad level filtration. Doubles as a blower! *Includes: 59 in. 2-piece 2-bend aluminum wand, 14 in. scalloped floor tool, 17 in. crevice tool, 5 in. upholstery tool and 3 in. dust brush.*

70-4002 HEPA Raven 6-Quart Backpack with Power Head Accessory

1.5 HP, 1-stage, 1340 Watt vacuum motor. 11.5 Amps, 115 Volt, 150 CFM, height 23 in., weight 9.5 lbs. HEPA filtration including HEPA bag and HEPA motor filter. Filters 99.97% of airborne particles 0.3 microns or larger. Made of roto-molded polyethylene, ergonomic backrest and superior airflow design with quad level filtration. Doubles as a blower! *Includes: power head accessory.*

70-4003 HEPA Raven 6-Quart Backpack with 5 Piece Standard Tool Kit and Power Head Accessory

1.5 HP, 1-stage, 1340 Watt vacuum motor. 11.5 Amps, 115 Volt, 150 CFM, height 23 in., weight 9.5 lbs. HEPA filtration including HEPA bag and HEPA motor filter. Filters 99.97% of airborne particles 0.3 microns or larger. Made of roto-molded polyethylene, ergonomic backrest and superior airflow design with quad level filtration. Doubles as a blower! *Includes: power head accessory, 59 in. 2-piece 2-bend aluminum wand, 14 in. scalloped floor tool, 17 in. crevice tool, 5 in. upholstery tool and 3 in. dust brush.*



Aviation Raven 6-Quart Backpacks

Aviation Raven



70-5000 Aviation Raven 6-Quart Backpack

1.5 HP, 60 Hz, 1-stage, 802 Watt vacuum motor. 6.8 Amps, 115 Volt, 112 CFM, height 23 in., weight 10 lbs. Made of roto-molded polyethylene, ergonomic backrest and superior airflow design with quad level filtration. Designed for the airline industry and can be plugged directly into an airplane's power outlet. Doubles as a blower! *Includes: machine only.*

70-5001 Aviation Raven 6-Quart Backpack with 5 Piece Standard Tool Kit

1.5 HP, 60 Hz, 1-stage, 802 Watt vacuum motor. 6.8 Amps, 115 Volt, 112 CFM, height 23 in., weight 10 lbs. Made of roto-molded polyethylene, ergonomic backrest and superior airflow design with quad level filtration. Designed for the airline industry and can be plugged directly into an airplane's power outlet. Doubles as a blower! *Includes: 59 in. 2-piece 2-bend aluminum wand, 14 in. scalloped floor tool, 17 in. crevice tool, 5 in. upholstery tool and 3 in. dust brush.*



Hipster 6-Quart Hip Vacuums

Warranty: lifetime on body, 5-years on motor and electrical components

D-P Hipster



D-P Hipster 6-Quart Hip Vacuum

30-1000 D-P Hipster 6-Quart Hip Vacuum

1.5 HP, 1-stage, 802 Watt vacuum motor. 6.8 Amps, 115 Volt, 112 CFM, height 11 in. x 8 in. wide, weight 7 lbs. Made of roto-molded polyethylene, ergonomic backrest with shoulder and waist belt. Quad level filtration.

Includes: machine only.

30-1001 D-P Hipster 6-Quart Hip Vacuum with 5 Piece Standard Tool Kit

1.5 HP, 1-stage, 802 Watt vacuum motor. 6.8 Amps, 115 Volt, 112 CFM, height 11 in. x 8 in. wide, weight 7 lbs. Made of roto-molded polyethylene, ergonomic backrest with shoulder and waist belt. Quad level filtration.

Includes: 59 in. 2-piece 2-bend aluminum wand, 14 in. scalloped floor tool, 17 in. crevice tool, 5 in. upholstery tool and 3 in. dust brush.

30-1002 D-P Hipster 6-Quart Hip Vacuum with Power Head Accessory

1.5 HP, 1-stage, 802 Watt vacuum motor. 6.8 Amps, 115 Volt, 112 CFM, height 11 in. x 8 in. wide, weight 7 lbs. Made of roto-molded polyethylene, ergonomic backrest with shoulder and waist belt. Quad level filtration.

Includes: power head accessory.

30-1003 D-P Hipster 6-Quart Hip Vacuum with 5 Piece Standard Tool Kit and Power Head Accessory

1.5 HP, 1-stage, 802 Watt vacuum motor. 6.8 Amps, 115 Volt, 112 CFM, height 11 in. x 8 in. wide, weight 7 lbs. Made of roto-molded polyethylene, ergonomic backrest with shoulder and waist belt. Quad level filtration.

Includes: power head accessory, 59 in. 2-piece 2-bend aluminum wand, 14 in. scalloped floor tool, 17 in. crevice tool, 5 in. upholstery tool and 3 in. dust brush.

Super Hipster



Super Hipster 6-Quart Hip Vacuum

30-2000 Super Hipster 6-Quart Hip Vacuum

1.5 HP, 1-stage, 1340 Watt vacuum motor. 11.5 Amps, 115 Volt, 150 CFM, height 11 in. x 8 in. wide, weight 7.5 lbs. Made of roto-molded polyethylene, ergonomic backrest with shoulder and waist belt. Quad level filtration. *Includes: machine only.*

30-2001 Super Hipster 6-Quart Hip Vacuum with 5 Piece Standard Tool Kit

1.5 HP, 1-stage, 1340 Watt vacuum motor. 11.5 Amps, 115 Volt, 150 CFM, height 11 in. x 8 in. wide, weight 7.5 lbs. Made of roto-molded polyethylene, ergonomic backrest with shoulder and waist belt. Quad level filtration. *Includes: 59 in. 2-piece 2-bend aluminum wand, 14 in. scalloped floor tool, 17 in. crevice tool, 5 in. upholstery tool and 3 in. dust brush.*

30-2002 Super Hipster 6-Quart Hip Vacuum with Power Head Accessory

1.5 HP, 1-stage, 1340 Watt vacuum motor. 11.5 Amps, 115 Volt, 150 CFM, height 11 in. x 8 in. wide, weight 7.5 lbs. Made of roto-molded polyethylene, ergonomic backrest with shoulder and waist belt. Quad level filtration. *Includes: power head accessory.*

30-2003 Super Hipster 6-Quart Hip Vacuum with 5 Piece Standard Tool Kit and Power Head Accessory

1.5 HP, 1-stage, 1340 Watt vacuum motor. 11.5 Amps, 115 Volt, 150 CFM, height 11 in. x 8 in. wide, weight 7.5 lbs. Made of roto-molded polyethylene, ergonomic backrest with shoulder and waist belt. Quad level filtration. *Includes: power head accessory, 59 in. 2-piece 2-bend aluminum wand, 14 in. scalloped floor tool, 17 in. crevice tool, 5 in. upholstery tool and 3 in. dust brush.*

Hipster 6-Quart Hip Vacuums *Continued*

Warranty: lifetime on body, 5-years on motor and electrical components

HEPA 1.5 HP Hipster



HEPA Hipster 6-Quart Hip Vacuum

30-3000 HEPA Hipster 6-Quart Hip Vacuum

1.5 HP, 1-stage, 1340 Watt vacuum motor. 11.5 Amps, 115 Volt, 150 CFM, height 11 in. x 8 in. wide, weight 7.5 lbs. HEPA filtration including HEPA bag and HEPA motor filter. Filters 99.97% of airborne particles 0.3 microns or larger. Made of roto-molded polyethylene, ergonomic backrest with shoulder and waist belt. Quad level filtration. *Includes: machine only.*

30-3001 HEPA Hipster 6-Quart Hip Vacuum with 5 Piece Standard Tool Kit

1.5 HP, 1-stage, 1340 Watt vacuum motor. 11.5 Amps, 115 Volt, 150 CFM, height 11 in. x 8 in. wide, weight 7.5 lbs. HEPA filtration including HEPA bag and HEPA motor filter. Filters 99.97% of airborne particles 0.3 microns or larger. Made of roto-molded polyethylene, ergonomic backrest with shoulder and waist belt. Quad level filtration. *Includes: 59 in. 2-piece 2-bend aluminum wand, 14 in. scalloped floor tool, 17 in. crevice tool, 5 in. upholstery tool and 3 in. dust brush.*

30-3002 HEPA Hipster 6-Quart Hip Vacuum with Power Head Accessory

1.5 HP, 1-stage, 1340 Watt vacuum motor. 11.5 Amps, 115 Volt, 150 CFM, height 11 in. x 8 in. wide, weight 7.5 lbs. HEPA filtration including HEPA bag and HEPA motor filter. Filters 99.97% of airborne particles 0.3 microns or larger. Made of roto-molded polyethylene, ergonomic backrest with shoulder and waist belt. Quad level filtration. *Includes: power head accessory.*

30-3003 HEPA Hipster 6-Quart Hip Vacuum with 5 Piece Standard Tool Kit and Power Head Accessory

1.5 HP, 1-stage, 1340 Watt vacuum motor. 11.5 Amps, 115 Volt, 150 CFM, height 11 in. x 8 in. wide, weight 7.5 lbs. HEPA filtration including HEPA bag and HEPA motor filter. Filters 99.97% of airborne particles 0.3 microns or larger. Made of roto-molded polyethylene, ergonomic backrest with shoulder and waist belt. Quad level filtration. *Includes: power head accessory, 59 in. 2-piece 2-bend aluminum wand, 14 in. scalloped floor tool, 17 in. crevice tool, 5 in. upholstery tool and 3 in. dust brush.*

Replace bags for 6-Quart and 10-Quart Backpacks and Hip Vacuums



10-0006
10-Quart Vacuum
Micro-Lined Filter Bag
(10 Pack)



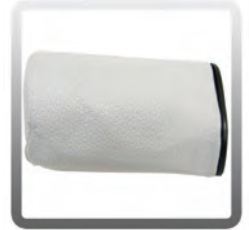
10-0006-HEPA
10-Quart Vacuum HEPA
Micro-Lined Filter Bag
(10 Pack)



10-0007-6
6-Quart Vacuum Cloth
Filter Bag with L-Style
Grommet



10-0007-10
10-Quart Vacuum Cloth
Filter Bag with L-Style
Grommet



10-0007-C
10-Quart Vacuum Cloth
Filter Bag for Cylindrical
Style Backpack



10-0197
6-Quart Vacuum Micro-
Lined Filter Bag (10 Pack)



10-0197-HEPA
6-Quart HEPA Micro-
Lined Filter Bag
(10 Pack)

Accessories/Parts for 6-Quart and 10-Quart Backpacks and Hip Vacuums



10-0002-A
Complete Vacuum Lid
for 10-Quart Raven
Backpack Vacuums
(NO Hose)



10-0002-B
Complete Vacuum Lid
with Hose and Cuff
for 10-Quart Raven
Backpack



10-0002-6-A
Complete 6-Quart
Vacuum Lid (NO Hose)



10-0008-B
Complete Dome Filter
with Bag Support



10-0012
XP-3 WHISPER Raven
2-Stage Motor with
Gasket



10-0013
Super Raven 1-Stage
Motor with Gasket



10-0018
Sound Dampening
Band



10-0019
10-Qt. Dual Cell Noise Filter
10-0019-6
6-Qt. Dual Cell Noise Filter



10-0020
Cushioned Back Pad



10-0021
Shoulder and Waist Belt

Accessories/Parts for 6 and 10-Quart Backpacks and Hip Vacuums *Continued*



10-0021-BA
Deluxe Padded Waist Belt



10-0022
Screw for Shoulder and Waist Belt



10-0023
Washer for Shoulder and Waist Belt



10-0024-COM
Complete 4 in. Vacuum Hose with Cuff (1-1/2 in. Diameter)



10-0025
On/Off Switch



10-0026-A
17 in. Complete Pigtail Cord with Strain Relief Nut and Electrical Connectors



10-0028
50 ft. Electrical Cord



10-0029
Aluminum Vac Wand, 2-Piece, 56 in. 2-Bend Wand with 3 Piece Head Kit



10-0031
5 in. Upholstery Tool



10-0032
14 in. Scalloped Floor Tool



10-0033
17 in. Crevice Tool



10-0034
Standard 5-Piece Tool Kit for 1-1/2 in. Wand



10-0036
Complete 4 in. Super Flex Vacuum Hose with Cuffs, 1-1/2 in. Diameter



10-0037
3 in. Round Dust Brush



10-0055-L
Long Screws for Top of Hipster Waist Belt



10-0055-S
Short Screws for Bottom of Hipster Waist Belt



10-0060
16 in. Carpet Tool with Brush and Swivel



10-0164
Powerhead Kit, Includes Wand, Electrical Fittings and Vacuum Head



10-0165
Copper Ring for Wand Head



10-0170
14 in. Squeegee Floor Tool

Accessories/Parts for 6 and 10-Quart Backpacks and Hip Vacuums *Continued*



10-0170-A
Replacement Blades for
14 in. Squeegee Tool
(4 Pack)



10-0173
14 in. Felt Floor Tool



10-0173-A
Replacement Blades for
14 in. Felt Floor Tool



10-0175
16 in. Carpet Tool with
Adjustable Brush



10-0175-A
Replacement Brushes for
16 in. Carpet Tool with
Adjustable Brush



10-0176
1-4 in. Overhead
Pipe Cleaner Wand
Attachment



10-0176-A
4-8 in. Overhead
Pipe Cleaner Wand
Attachment



10-0177
4 in. Car Utility Tool



10-0181
28 in. Crevice Tool



10-0183
14 in. Floor Tool with
Nylon Brush



10-0183-A
14 in. Replacement
Brush for Nylon Floor
Tool



10-0187
36 in. Strait Pick-Up Tool



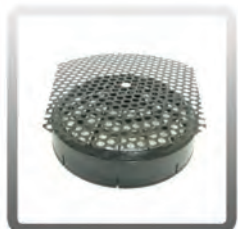
10-0195
Swivel Cuff for 1-1/2 in.
Diameter Hose



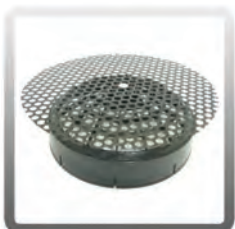
10-0199
Vacuum Motor Gasket
with PSA



10-0217
Washer for Hipster Waist
Belt for 6-Quart and Hip
Vacuums



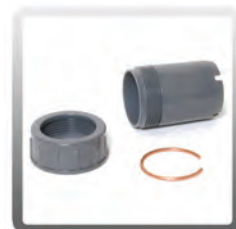
10-0219-6
Complete HEPA Filter
with Bag Support for
6-Quart Backpacks



10-0219-10
Complete HEPA Filter
with Bag Support for
10-Quart Backpacks



10-0220
5 in. Aluminum Dust
Brush



10-0223-B
3-Piece Head Kit for
Wand



10-0224
1-Piece, 2-Bend
Aluminum Wand

Accessories/Parts for 6 and 10-Quart Backpacks and Hip Vacuums *Continued*



10-0340
14 in. Scalloped Felt Floor Tool



10-0340-A
14 in. Felt Replacement Blades for 14 in. Scalloped Felt Floor Tool



10-0342
60 in. Aluminum Vac Wand Extension



10-0345
11 in. Crevice Tool



10-0346
D.P. Hipster Motor for 6-Quart Backpack Vacuum and Hipster Hip Vacuum



10-0347
11 in. Carpet Tool with Adjustable Brush



10-0347-A
Replacement Brush for 11 in. Carpet Tool with Adjustable Brush



10-0372
Waist Belt Clip



10-0409
Backpack Waist Belt Extension (Extends up to 12 in.)



10-0421
Hipster Waist Belt for 6-Quart Hipster Hip Vacuum



10-0422
Powerhead Connector Kit



10-0430
15 in. Smooth Glide Floor Tool



10-0438
14 in. Slotted Horse Hair Brush



10-0440
14 in. Quick Clean Paddle



10-0441
14 in. Horse Hair Brush



10-0441-A
Replacement Brushes for 14 in. Horse Hair Brush



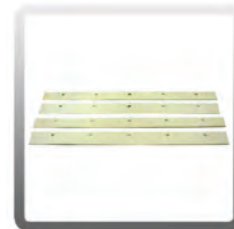
10-0453
54 in. Aluminum Vac Wand Extension



10-0454
36 in. Aluminum Vac Wand Extension



10-0472
14 in. Easy Glide Floor Tool



10-0489
White Replacement Blades for 14 in. Squeegee Tool (4 Pack)

Accessories/Parts for 6 and 10-Quart Backpacks and Hip Vacuums *Continued*



10-0497
Hipster Waist Belt
Extension (Extends up to
12 in.)



10-1333
Black Super Motor
Brushes, Single Stage
(Set of 2)



10-1333-O
Orange XP-3 Whisper
Motor Brushes, 2-Stage
(Set of 2)



10-2300
Turbo Brush Kit, Includes
Telescopic Wand, 1-1/2 in.
to 1-1/4 in. Hose Handle



10-2507
1-1/4 in. Turbo Brush

Sidewinder Wands and Tools for 6 and 10-Quart Backpacks and Hip Vacuums



10-0184
59 in. 2-Piece Sidewinder Wand

10-0184-1
59 in. 1-Piece Sidewinder Wand

10-0184-EXT
59 in. 1-Piece Sidewinder Extension
Wand

10-0188
32 in. Sidewinder Half Curve Adapter
Pipe Cleaner Wand



10-0185
18 in. Sidewinder Carpet Tool

10-0185-15
15 in. Sidewinder Carpet Tool

10-0185-8
8 in. Sidewinder Carpet Tool



10-0185-F
18 in. Sidewinder Felt Floor Tool

10-0185-15-F
15 in. Sidewinder Felt Floor Tool

10-0185-FS
18 in. Sidewinder Scalloped Felt Floor
Tool

10-0185-15-FS
15 in. Sidewinder Scalloped Felt Floor
Tool



10-0185-H
18 in. Sidewinder Horsehair Floor Tool

10-0185-15-H
15 in. Sidewinder Horsehair Floor Tool

10-0185-8-H
8 in. Sidewinder Horsehair Dusting
Brush



10-0185-N
18 in. Sidewinder Nylon Floor Tool

10-0185-15-N
15 in. Sidewinder Nylon Floor Tool



10-0185-S
18 in. Sidewinder Squeegee Tool

FORCE 14 Upright Vacuum

Warranty: 2-years on machine



FORCE 14 Upright Vacuum

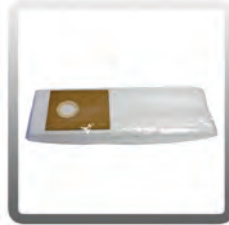
60-1000 Force 14 Upright Vacuum

12 Amp, 1000 Watt vacuum motor and 1.3 Amp, 145 Watt brush bar drive motor. Four-position carpet height adjustment with on-board tools and furniture guard. Standard filtration (HEPA filtration available). Weight 23.8 lbs. *Includes: (1) 50 ft. safety power cord.*



60-1001

FORCE 14 Replacement
Paper Bags (10 Pack)



60-1001-HEPA

FORCE 14 HEPA
Replacement Paper
Bags (10 Pack)

Air Mover

Warranty: lifetime on body, 1-year on electrical components



GenAir Air Mover

90-0000 GenAir Air Mover

1/2 HP, 115 V vacuum motor. 3-speed fan (780 RPM at 1500 CFM, 1000 RPM at 1900 CFM, 1150 RPM at 2400 CFM). Molded, high-density polypropylene body. 19.2 in. length x 14.5 in. width x 19.5 in. height. Weight 32 lbs. *Includes: (1) 20 ft. safety power cord.*

Solution Tank

Warranty: lifetime on body, 1-year on all other parts



4-Gallon Solution Tank

40-1000 4-Gallon Solution Tank

4-gallon tank made of heavy-duty polyethylene and can withstand temperatures up to 200 degrees Fahrenheit without becoming brittle, cracking or leaking. Super drain valve and large opening that allows for spill-free filling. Color standard white. *Includes: solution tank complete with all fittings.*



10-0056

Replacement Parts Kit
for Solution Tank



Your Ultimate Choice in
Profitable Cleaning Performance!

Contact us for more information or to place your order:
phone: 800.983.5834 | fax: 714.901.8404 | info@sandiaplastics.com

Customer Warranty Information

All equipment is inspected and tested before shipping from the manufacturer. All parts are warranted to be new and free from defects in workmanship and material, under normal use to the original retail purchaser. This warranty limits manufacturer's liability for defects in workmanship or materials for replacement of defective parts only. The manufacturer accepts no liability for incidental or consequential damages arisen from the use of any equipment, defective or not. This warranty is in lieu of all expressed or implied warranties and is extended only to the original retail purchaser. Manufacturer sales and service representatives are not authorized to waive or alter the terms of this warranty, or to increase the obligations of the manufacturer under the warranty. Parts replaced or repaired under this warrant are warranted for the remainder of the original warranty period.

Freight charges and travel charges to and from the service provider shall be covered for ninety (90) days from the purchase date. After this ninety (90) day period, these freight charges shall be paid by the equipment owner, subject to manufacturer discretion. Certain circumstances may require additional consideration. No travel charges shall be covered after ninety (90) days.

The manufacturer covers up to one (1) year (365 days) of service labor at the manufacturer's calculated hourly labor rate/repair time when performed by a manufacturer's authorized service provider. Ultimately, labor reimbursement costs are at the discretion of the manufacturer. After one (1) year, the original retail purchaser is responsible for all labor costs with no manufacturer reimbursement.

The original purchaser must contact the manufacturer to follow correct RMA/warranty procedures. They must have a copy of the RMA Sheet enclosed in the box with the returned item. No returns shall be authorized unless the proper RMA procedures are followed. It is the responsibility of the distributor to repair the customer's equipment as soon as possible. If the distributor does not have the facilities to repair the equipment, it may be shipped or taken to an authorized service center for repair.

The manufacturer charges a 15% restocking fee for any items that are being returned to stock. Items must be new, unused, free of damage and are only good for up to one (1) year. After one (1) year, the manufacturer does not accept the return of any item(s) for a reimbursed price.

Authorized warranty replacement parts need to come directly from the manufacturer. Any use of any other parts will void warranty. Sandia Products does not reimburse for parts used by customer that were not supplied directly for the machine under warranty.

The customer must contact the manufacturer prior to working on or changing out of any parts, etc. The manufacturer must issue an RMA Sheet containing approved labor time and replacement parts. Do not send parts or equipment back to the manufacturer without a RMA Number and approval. No labor will be paid for, nor parts cost paid for or reimbursed, that have not previously been approved by the manufacturer. All warranty work must be approved and authorized to qualify, and appropriate warranty procedures must be followed.

The warranty starts on the purchase date by the original purchaser from an authorized Sandia Products distributor, subject to proof of purchase. The Machine Registration Form must be completed online at the time of purchase. If proof of purchase cannot be identified, the warranty start date is ninety (90) days after the date of sale to an authorized Sandia Products distributor.

Register your machine online!

Go to <http://www.sandioplastics.com/registration.aspx>

Sandia

PRODUCTS

Your Ultimate Choice in
Profitable Cleaning Performance!



Visit us at www.sandioplastics.com!

**CALL US TODAY IF YOU HAVE ANY QUESTIONS
OR WOULD LIKE TO PLACE AN ORDER!**

15571 Container Lane, Huntington Beach, CA 92649
(p) 800-983-5834 | (f) 714-901-8404 | www.sandioplastics.com

2012 SANDIA PRODUCTS CATALOG