



Carpet Care

Carts &
Mopping
Systems

Floor Care

VACUUM SYSTEMS



HD 14/18

Upright Vacuums

Quality. Performance. Durability.

Protecting your carpet investment requires a powerful and dependable vacuum. The HD 14 and HD 18 have the versatility of a commercial upright vacuum with an onboard pullout wand that performs detail work using a single vacuum.

The NaceCare HD 14 and HD 18 combine ergonomic design, effortless handling, quiet operation and superior soil removal. This commercial vacuum is lightweight and maneuverable. The ergonomic, lightweight handle ensures operator comfort. An indicator light signals when the bag is full.

The durable stretch hose expands to four times its stored length. The vacuum throat is easily accessible for unclogging trapped debris. Integrated hose strain relief reduces kinking and extends the life of the hose during repetitive use.

The electronic brush shutoff mechanism detects lodged debris in the roller brush chamber. The roller brush automatically shuts down and an indicator light changes to red. This protects the motor, belt, pulley and bearings. At 66 dB(A) the HD upright vacuum exceeds the industry standards for quiet vacuums. This low-decibel level reduces worker fatigue and disruption to occupants in buildings.

The three-stage filtration system includes a top-fill bag, intake filter, and an exhaust filter. An optional HEPA filter providing 99.97% efficiency at 0.3 microns is also available. Both the HD 14 and HD 18 meet or exceed the standards required by LEED-EBOM and CIMS-GB and they are also both approved by The Carpet and Rug Institute. The HD series makes it easy to change the filter bag since the large capacity, top-fill bag simply fits easily into the vacuum chamber. The unit will not run without a bag installed and the door is sealed with a single position latch for easy access.



HD 14

MODEL	HD 14"	HD 18"
Vac Motor	1,000W	1,000W
Performance - Water Lift	118"	118"
Performance - Airflow	63 cfm	63 cfm
Brush Motor	200W	300W
Brush RPM	4,000 rpm	3,500 rpm
Capacity	6.5 quart	6.5 quart
Weight	16 lbs.	17 lbs.
Noise Level	66 dB(A)	66 dB(A)
Power Cord	50'	50'



HD 18

Key Features

- Four-position brush height adjustment with indicator light
- Bag full indicator light
- Won't run without a bag installed
- Electronic brush shutoff protects motor if brush becomes jammed
- Upper body goes right to the floor to get under beds and furniture
- Quick-change brush strip
- Four-stage filtration standard
- Optional HEPA filter available on all units
- V belt for long life
- 4:1 stretch hose
- Easy bag installation
- Dual-motor performance
- Optional accessories include dusting brush and upholstery tool
- Carpet and Rug Institute Certified
- Crevice tool standard



Illuminated on/
off switch



On board
vacuum wand



Four position
height adjustment



Quick change
brush strip



Optional HEPA
filter available



Top fill bag



Roller brush
indicator light



NaceCare upright and canister vacuums meet the stringent certification requirements for the Carpet and Rug Institute (CRI).



QUIET Technology



TIME Saver



SOIL Removal



HEPA Filtration
(Optional)

PVR 200/HENRY

Provac Dry Canister Vacuums

PVR 200 (Henry) and PVR 380 have powerful 1,200-watt vacuum motors providing 110" of lift and 114 cfm for excellent soil recovery and longer carpet life. With noise levels of 47 dB(A) on low power and 49 on high, these units are excellent for daytime cleaning.

Autosave starts the vacuum on low speed, reducing power consumption by 50% while only reducing suction 25%. When equipped with a HEPA-FLO bag, our standard filtration is 0.3 micron at 99.97% efficiency, improving indoor air quality and reducing dust in the building.

Built for commercial use, they are equipped with a thermal overload for long-term motor protection and operator safety. The rewind head conveniently stores the 33' power cord internally, preventing cord damage from improper wrapping; both units now offer a quick-change cord requiring no tools. PVR 200 (Henry) now offers wand docking on 1 1/4" wands.



PVR 200 / HENRY



Wand docking



Quick change cord

MODEL	PVR 200	PVR 380
Motor	1,200W, 1.6 Hp, 2 stage, 2 speed	1,200W, 1.6 Hp, 2 stage, 2 speed
Water Lift	110"	110"
Airflow	114 cfm	114 cfm
Capacity	2.5 gal.	4.5 gal.
Standard Filtration*	0.3 micron	0.3 micron
Microtex Combination*	99.97% eff.	99.97% eff.
Weight	15 lbs.	18 lbs.
Power Cord	33'	33'
Noise Level	47/49 dB(A)	47/49 dB(A)
Tank Construction	Polypropylene	Structural Foam

* Meets HEPA spec for non-hazardous recovery and exceeds LEED-EB spec

PVR 380



PVR 380



Rewind head and AUTOSAVE are standard features!



Powerful 1.6 HP 2 stage vacuum motor



Standard Microtex Combination filter



NaceCare upright and canister vacuums meet the stringent certification requirements for the Carpet and Rug Institute (CRI).



QUIET Technology



TIME Saver



SOIL Removal



HEPA Filtration



ECO EnergySaver

PVR 390

Provac Dry Canister Vacuum

The PVR 390 is in a class of its own as the first canister vacuum to include on-board storage for more than just vacuum tools. A telescoping handle allows for compact storage while the built-in wand holder makes transporting a breeze. With a powerful 1,200-watt vacuum motor, it has 110" of lift and 114 cfm for excellent soil recovery and longer carpet life.

With a noise level of 47 dB(A) on low power and 49 on high, this unit is excellent for daytime cleaning. When equipped with a HEPA-FLO bag, our standard filtration is 0.3 micron at 99.97% efficiency, improving indoor air quality and reducing dust in the building.

The rewind head conveniently stores the 33' power cord internally, preventing cord damage from improper wrapping; also it now comes with a quick-change cord requiring no tools. Autosave starts the vacuum on low speed, reducing power consumption by 50% while only reducing suction 25%.

This unit is a clear choice for any facility large or small.



PVR 390

MODEL

PVR 390

Motor	1,200W, 1.6 Hp, 2 stage, 2 speed
Water Lift	110"
Airflow	114 cfm
Capacity	4 gal.
Standard Filtration*	0.3 micron
Microtex Combination*	99.97% eff.
Weight	19 lbs.
Power Cord	33'
Noise Level	47/49 dB(A)
Tank Construction	Structural Foam

* Meets HEPA spec for non-hazardous recovery and exceeds LEED-EB spec



On-board
wand storage



Rewind head and AUTOSAVE are standard features!

Convenient storage caddy



Quick change cord



NaceCare upright and canister vacuums meet the stringent certification requirements for the Carpet and Rug Institute (CRI).



QUIET Technology



TIME Saver



SOIL Removal



HEPA Filtration



ECO EnergySaver

NSP 200

NuSave Canister Vacuum (Dry)

The NSP and NSR 200 from NaceCare are without a doubt the market leaders in “green” vacuums. With Autosave as standard, they start on low to save energy, yet when needed high power is only a “flick” of a switch away. With noise levels of 47 dB(A) on low power and 49 dB(A) on high, these units are excellent for daytime cleaning.

Unbelievable Soil Recovery without Compromise!

A new specially designed floor tool recovers the same amount of soil on low power (400-watts) as our ProVacs (PVR 200, 380, 390) do on high (1200-watts). With this kind of performance, the high setting is only needed in special circumstances.



NSP 200

Background Information (ASSUMING PROFESSIONAL USE OF 6 HOURS PER DAY)

Cost Per kwh	\$0.90		
Cost per hour (1,200W)	\$0.108	Cost per day @1,200 watts	\$0.64
Cost per hour (800W)	\$0.072	Cost per day @ 800 watts	\$0.42
Cost per hour (400W)	\$0.036	Cost per day @ 400 watts	\$0.21

At 255 days annual use (51 WEEKS X 5 DAYS WE HAVE)

Cost at 1,200 watts full time	\$163.20	using a 1,200 watt machine full time
Cost at 800 watts full time	\$107.10	using a NuSave machine on high setting full time
Cost at 400 watts full time	\$53.55	using a NuSave machine on low setting full time

Assuming we use our NuSave machine at 80% on low power and 20% on high, our savings are:

Cost to operate using it 20% of the time on high	\$21.42
Cost to operate using it 80% of the time on low	\$42.84
Total Cost to Operate an NS machine for 255 days is	\$64.26
Savings versus operating a 1200 watt machine are	$\$163.20 - \$64.26 = \$98.94$ or 60%

At approximately \$100 a year in savings, our NuSave models certainly make sense. In essence, NuSave recovers soil as well as anything on the market, filters better than anything on the market and saves you money.

NSR 200



NSR 200

Filtration

With the NSP 200 at 98.6% efficient at 0.5 micron and the NSR 200 at 99.97% efficient at 0.3 microns, soil retention is not an issue. This improves indoor air quality and reduces dust in the building. They are both LEED-EB compliant and the NSR 200 meets HEPA for nonhazardous soil recovery!

Power Consumption

On the low setting at 400-watts, NuSave vacuums consume 1/3 of the power of most vacuums on the market today while recovering the same amount of soil. Based on this, the cost savings are significant.

MODEL	NSP 200	NSR 200
Motor	400W / 800W, 2 stage, 2 speed	400W/800W, 2 stage, 2 speed
Water Lift	60" / 90"	60" / 90"
Airflow	81 cfm	81 cfm
Capacity	2.5 gal.	2.5 gal.
Standard Filtration	0.5 micron	0.3 micron
Tritex	98.6% eff.	
Microtex Combination*		99.97% eff.
Weight	13 lbs.	13 lbs.
Power Cord	33'	33'
Noise Level	45/47 dB(A)	45/47 dB(A)
Tank Construction	Polypropylene	Polypropylene

* Meets HEPA spec for non-hazardous recovery and exceeds LEED-EB spec



NuSaveCare upright and canister vacuums meet the stringent certification requirements for the Carpet and Rug Institute (CRI).



QUIET Technology



TIME Saver



SOIL Removal



HEPA Filtration



ECO EnergySaver

PSP 200/380

ProSave Canister Vacuum (Dry)

Our ProSave series of vacuums boast a 1,200-watt motor that provides 110" of lift and 114 cfm. Combined with filtration of 98.6% efficiency @ 0.5 microns, you have a winning combination. Autosave feature automatically starts the vacuum on low for reduced power consumption.

Noise levels of 47 dB(A) on low power and 49 on high make these units excellent for daytime cleaning. The cord wrap system stores it neatly without tangles while our new "Plug Cable" system allows anyone to change the power cord quickly and easily, reducing downtime.

ProSave and NVH units weigh under 16 pounds, making transporting effortless. NVH 380 also includes a PTO socket for use with our A350E electric power head kit.

All ProSave vacuums are LEED-EB compliant and CRI approved.



PSP 200



PSP 380

MODEL

PSP 200/380 / NVH 380 (Electric Power Head Only)

Motor	PSP
	NVH
Water Lift	110" / 115"
Airflow	114 cfm / 114 cfm
Capacity	2.5 gal. / 4.5 gal.
Standard Filtration	0.5 micron
Microtex Combination	98.6% eff.

Weight	13 lbs. /14 lbs. /15.5 lbs.
Power Cord	33'
Noise Level	47/49 dB(A) / 62 dB(A)
Tank Construction	Poly/Structural Foam



NaceCare upright and canister vacuums meet the stringent certification requirements for the Carpet and Rug Institute (CRI).



QUIET Technology



TIME Saver



SOIL Removal



ECO EnergySaver



NBV 180



Lithium-ion batteries



NBV 220

NBV 180/220

Battery Canister Vacuum (Dry)

With a noise level of only 45 dB(A), they are excellent for daytime cleaning or cleaning any congested or occupied public areas. Cord-free operation improves productivity significantly and eliminates accidents commonly associated with power cords such as tripping over them or getting electrical shocks due to improper care. With 2- and 3-gallon tanks the NBV 180 and NBV 220 both offer plenty of capacity.

The 250-watt vacuum motor coupled with run time of 45 minutes ensures plenty of power to get the job done; the battery provides stable power over the entire discharge. The 36-volt lithium ion battery can be interchanged between both units and charges in 2.5 hours. The on/off switch and battery status are conveniently located on front of the machine for the operator to see at all times.

When equipped with a HEPA-FLO bag, the filtration is 0.3 micron @ 99.97% efficiency, improving indoor air quality and reducing dust in the building. Weighing in at only 14 pounds, the NBV 180 is compact and lightweight with a durable polyethylene tank.

At 20 pounds, the NBV 220 incorporates all features of our popular and very innovative PVR 390 vacuum including a structural foam tank for durability and built-in cart allowing easy transport of a second battery should it be required.

MODEL

NBV 180/220

Motor	250W
Run Time	45 min.
Charge Time	2.5 hrs.
Water Lift	45"
Airflow	50 cfm

Standard Filtration*	99.97% eff. @ 0.3 micron
Capacity	2 gal. / 3 gal.
Weight	14 lbs. / 19.5 lbs.
Noise Level	45 dB(A)

* Meets HEPA spec for non-hazardous recovery and exceeds LEED-EB spec



QUIET Technology



TIME Saver



SOIL Removal



HEPA Filtration



BATTERY Technology

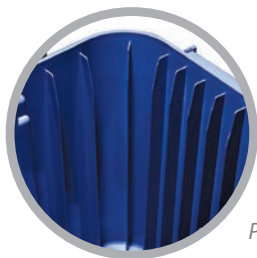
RSV I30/200

Backpack Vacuums Corded

The adjustable back support, waist and shoulder straps are designed to minimize operator fatigue and the hose features swivel fittings to ensure tangle-free operation. All three units are equipped with a four-stage filtration system providing 0.3-micron filtration at 99.97% efficiency, improving indoor air quality and reducing dust in the building.

The patented ribs on inside of the tank ensure no suction is lost no matter how full the bag is because the bag is never allowed to seal against the side of the tank cutting off the flow of air ensuring vacuum performance is guaranteed right up until the bag is full. This is even more critical on battery-powered equipment where we don't have the luxury of high-powered electric vacuum motors to pull the dirt through the bag.

At only 10.8 pounds, the RSV 130 is among the lightest full-size backpacks on the market while the RSV 200 weighs in at only 12 pounds. Both units are extremely powerful offering 1200 watt motors providing 115" of lift and 114 cfm of airflow. For operator safety they are fitted with a thermal protection device.



Patented ribs



RSV 130



RSV 200

MODEL

RSV 130 / 200

Motor	1,200W, 1.6 Hp, 1 stage
Water Lift	115"
Airflow	114 cfm
Capacity	1.5 gal. / 2.5 gal.
Standard Filtration	0.3 micron
Microtex Combination*	99.97% eff.

Weight	10.8 lbs. /12 lbs.
Power Cord	42'
Noise Level	65 dB(A)
Tank Construction	Poly

* Meets HEPA spec for non-hazardous recovery and exceeds LEED-EB spec



NaceCare upright and canister vacuums meet the stringent certification requirements for the Carpet and Rug Institute (CRI).



QUIET Technology



TIME Saver



SOIL Removal



HEPA Filtration

RBV 130

Battery Powered Backpack Vacuum (Cordless)

As daytime cleaning becomes even more prevalent, the RBV 130 will certainly play a key role for our clients. With a noise level of 45 dB(A), this unit is excellent for daytime cleaning or cleaning any congested or occupied public area where noise or use of a power cord is an issue.

Cordless operation improves productivity significantly and eliminates accidents commonly associated with power cords such as tripping over them or getting electrical shocks due to improper care.

The 1.5-gallon tank provides the capacity required to do the job while a 250-watt vacuum motor with run time of 45 minutes ensures there is plenty of power. The 36-volt lithium ion battery can be interchanged with our canister units, provides stable power over the entire discharge and charges in 2.5 hours. The on/off switch and battery status are conveniently located for the operator to see at all times.

At 16 pounds, RBV 130 is compact, comfortable and light enough for anyone to use—much lighter than other units on the market.



RBV 130



Lithium-ion batteries



Battery indicator
on/off switch

MODEL

RBV 130

Motor	250W
Run Time	45 min.
Charge Time	2.5 hrs.
Water Lift	45"
Airflow	50 cfm

Standard Filtration*	99.97% eff. @ 0.3 micron
Capacity	1.5 gal.
Weight	16 lbs.
Noise Level	45 dB(A)

* Meets HEPA spec for non-hazardous recovery and exceeds LEED-EB spec



QUIET Technology



TIME Saver



SOIL Removal



HEPA Filtration



BATTERY Technology

PVR 320H

HEPA Vacuums Critical Filtration

The NaceCare Series Critical Filtration HEPA vacuums come in one- and two-motor configurations providing 110" of water lift and 114 cfm of airflow or 90" of lift and 160 cfm for excellent soil recovery. The motors carry three-year warranties and the HEPA filter is serialized and provides a minimum 99.97% filtration @ 0.3 microns.

Every machine is sodium flame tested after assembly to ensure they meet or exceed the European #3928 hazardous vacuum standard. All units come with their own test certificate verifying the standard was achieved.

The PVR 320H has a polypropylene tank and a two-speed head that offers ultraquiet operation at 49 dB(A) on high and 47 dB(A) on low. It also offers a quick-change cord that doesn't require tools and an internal cord rewind system that protects the power cord. This unit is an outstanding choice for health-care facilities including hospitals, long-term care facilities and nursing homes. It provides all the filtration capabilities of our larger machines in a quiet, compact unit at a fraction of the cost.



PVR 320H



Filtration certificate



Quick change cord

MODEL

PVR 320H

Motor	1,200W, 1.6 Hp, 2 stage, 2 speed
Water Lift	110"
Airflow	114 cfm
Capacity	2.5 gal.
Standard Filtration	0.3 micron
Microtex Combination	99.97% eff.

Weight	16.5 lbs.
Power Cord	33'
Noise Level	47/49 dB(A)
Tank Construction	Poly



NaceCare upright and canister vacuums meet the stringent certification requirements for the Carpet and Rug Institute (CRI).



QUIET Technology



TIME Saver



SOIL Removal



HEPA Filtration



ECO EnergySaver

NVQ 900H / WVD 900H



NVQ 900H/WVD 900H



HEPA filter



HEPA-Flo bags

NVQ/WVD (Dry and Wet/Dry)

The NVQ 900H and WVD 900H units come with durable structural foam heads and tanks making them extremely impact-resistant. They carry 10-year warranties on the tanks, providing peace of mind when transporting them. The WVD 900H also provides wet pick-up capability for hazardous materials that need to be dampened prior to recovery in order to prevent airborne contamination.

With health standards evolving such as the EPA's Lead Safe Certified Contractor program, HEPA vacuums are becoming more of a requirement for many industries today. Beginning April 22, 2010, federal law requires that contractors performing renovation, repair and painting projects that disturb more than six square feet of paint in homes, child care facilities, and schools built before 1978 must be certified and trained to follow specific work practices to prevent lead contamination. Our HEPA vacuums meet or exceed the EPA's requirements for such work.

MODEL

NVQ 900H / WVD 900H

Motor	1,200W, 1.6 Hp, 2 stage
Power Cord	42'
Tank Construction	Structural Foam
Water Lift	100" / 90"
Airflow	114 / 160 cfm

Standard Filtration	99.97% eff. @ 0.3 micron
Capacity	12 gal.
Weight	44 / 49 lbs.
Noise Level	64 / 67 dB(A)



NaceCare upright and canister vacuums meet the stringent certification requirements for the Carpet and Rug Institute (CRI).



QUIET Technology



TIME Saver



SOIL Removal



HEPA Filtration

WV 370/470

Wet/Dry Vacuums

Both units are manufactured from polyethylene so there is absolutely nothing to rust. The WV 370 comes with a handy carrying handle for easy dumping while WV 470 has a drain hose.

They are equipped with 1200 watt bypass motors providing 100" of lift and 95 cfm of airflow for excellent recovery wet or dry.

They come complete with a two-year warranty.

Each unit incorporates our ball float wet shutoff assembly: the ball rotates continually, staying clean and free from debris while ensuring water does not reach the motor.

Both are compact, manoeuvrable and easy to use; an excellent choice where a full-size wet vacuum isn't required or where use as a dry vacuum is needed.



MODEL

WV 370/470

Motor	1,200W, 1.6 Hp	Weight	19 lbs. / 22 lbs.
Airflow	95 cfm	Power Cord	42'
Water Lift	100"	Noise Level	61 dB(A)
Capacity	4 gal. / 7 gal.	Tank Construction	Polypropylene
Standard Filtration	0.5 micron		



QUIET Technology



TIME Saver



SOIL Removal

WV 570/800

Wet/Dry Vacuums

The WV 570 is manufactured from structural foam while WV 800 is polypropylene so there is absolutely nothing to rust.

The WV 570 has a handy carrying handle for easy dumping while WV 800 comes with a drain hose.

The WV 800 has polypropylene tank for maximum durability and the WV 570 hosts a structural foam tank. Both come with a 10-year tank warranty.

Both models feature 1200 watt bypass motors providing 100" of lift and 95 cfm of airflow for excellent recovery wet or dry.

Each comes complete with a two-year motor warranty and a ball float wet shutoff assembly that rotates continually, staying clean and free from debris while ensuring water does not reach the motor.

Not too big, not too small, the WV 570 and WV 800 are just right when a mid-sized wet/dry is what you need.



WV 570



WV 800

MODEL

WV 570/800

Motor	1,200W, 1.6 Hp
Airflow	95 cfm
Water Lift	100"
Capacity	6 gal. / 11 gal.
Standard Filtration	0.5 micron

Weight	34 lbs.
Power Cord	42'
Noise Level	64 dB(A)
Tank Construction	Structural Foam / Polyprop.



QUIET Technology



TIME Saver



SOIL Removal

WV 900/902

Wet/Dry Vacuums

The structural foam head of both the 900 and the 1800 series is rustproof and durable. Both the head and the tanks come complete with a 10-year warranty. The flexible dump tube permits quick and convenient emptying to a floor drain while the unique tip and pour system on the 900 series allows the tank to be emptied even when a floor drain isn't available.

A vapor barrier can be added to the units to eliminate moisture simply by putting a 13" floor pad into the top of the wet float assembly to prevent any foam or stripper from reaching the vacuum motor.

For wide-area cleaning, a 29" front-mounted squeegee kit can be fitted to either unit. Units with a front-mounted squeegee can recover water at 10,000 sq. ft. per hour.



WV 900



The unique tip and pour system allows the tank to be emptied even in the absence of a floor drain.



WVD 902



A vapor barrier can be added to eliminate moisture completely

Shown with optional front mount squeegee

MODEL

WV 900 / WVD 902

Motor	1,200W, 1.6 Hp / 2-800W, 1 Hp
Water Lift	100" / 90"
Airflow	95 cfm / 160 cfm
Capacity	12 gal.

Power Cord	42'
Weight	44 lbs. / 49 lbs.
Noise Level	64 dB(A) / 67 dB(A)
Tank Construction	Structural Foam



QUIET Technology



TIME Saver



SOIL Removal

WV 1800/1802P



Continuous
Pumper Unit

1800 SERIES

WV 1800 Series High Capacity Wet Vacuums

The 1800 series wet vacuums deliver dependable power and performance in a rugged unit. Both the tanks and head are manufactured in structural foam and carry 10-year warranties. The DH models have a large-diameter dump hose for fast draining while the P model incorporates a sump pump enabling continuous pumping of fluid without interrupting the vacuuming process.

WVD 1802P Continuous Pumper

The WVD 1802P enables continuous pumping of liquids during the vacuuming process. So, it is ideal for floods, water pipe ruptures, drain back-ups, and industrial spills. The submersible pump is made of durable, stainless steel for heat and chemical resistance. The motor uses a stainless steel shaft and triple seal system and has a thermal protection device to prevent overheating.

MODEL	WV 1800DH	WVD 1802DH	WV 1800P	WVD 1802P
Motor	1,200W, 1.6 Hp	2-800W, 1 Hp	1,200W, 1.6 Hp	2-800W, 1 Hp
Water Lift	100"	90"	100"	90"
Airflow	95 cfm	160 cfm	95 cfm	160 cfm
Capacity - Wed	20 gal.	20 gal.	20 gal.	20 gal.
Power Cord	42'	42'	42'	42'
Weight	81 lbs.	86 lbs.	81 lbs.	86 lbs.
Tank Construction	Structural Foam	Structural Foam	Structural Foam	Structural Foam
Head	Structural Foam	Structural Foam	Structural Foam	Structural Foam
Pump Power			500W	500W
Output			60 gpm	60 gpm
Type			Centrifugal	Centrifugal



QUIET Technology



TIME Saver

JS 1600C

Commercial Power Steamer

The power of steam attacks grease, grime, hard water deposits and mold—even kills bed bugs and their eggs—leaving the surface clean and sanitized, all without the use of chemicals

Operator safety is assured by many features including the 12 volt steam controls, a pressure switch, thermostat, high-limit thermal shutoff and pressure relief valve. The tank can be filled while unit is running, allowing for continuous use.

The JS 1600C is excellent on grouted floors, showers, kitchens and just about any area where detail cleaning is a challenge. It's very effective in all food preparation and processing areas and on stainless steel range hoods in industrial kitchens.

It can be used in hotel rooms for spotting draperies and cleaning bedspreads and carpets and even kills bed bugs on a hotel mattress!

In addition the JS 1600C can now be used for cleaning floors simply by adding the optional "steam mop" which comes complete with a 33' hose. The continuous flow system provides all the steam needed to remove dirt and built up soil from your floors while leaving them virtually dry!



Jet Steam 1600C



Shown with optional cart



Steam mop

MODEL

JET STEAM 1600C

Boiler Size

1.25 quarts

Boiler Capacity

4 quarts

Water Reservoir

4 quarts

Heating Power

1,500W

Steam Pressure

115 psi

Steam Temperature

338° F

Power Cord

8 ft

Weight

12 lbs

Total Power

1,500W, 120V



TIME Saver



SOIL Removal



KILLS Bed Bug

K I I 22 TST

Pressure Washer

At 1400 psi and 2.1 gpm (gallons per minute), the new K1122 TST with "Total Stop Start" (TST) has all the features a commercial user needs. It comes complete with 50-foot hose, a variable nozzle (Vario) and a Dirt Killer nozzle; The Vario nozzle adjusts the spray from a fan to a pencil jet while the Dirt Killer nozzle rotates a pencil jet spray on an axis creating a circle with tremendous cleaning ability.

The TST feature stops pump from running when unit not in use (spraying) and automatically starts the pump when you pull the trigger. The pump has stainless steel ceramic-coated pistons to reduce friction; ensuring years of heavy-duty use. Stainless steel valves and Teflon graphite rings allow it to run dry safely without damaging the pump.

Other features include a pressure gauge, chemical injection hose, hose reel and onboard storage for hose, gun and lances.



K I I 22 TST

MODEL

K I I 20T

Pump	Brass, Triplex Piston	Power Cord	23'
Pressure	1,400 psi	Weight	70 lbs.
Motor	1.5 Hp, 13.0 amps	Pressure Hose	50'
Volume	2.1 gpm	Includes	Gun w/ Lance, Vario Nozzle, Dirt Killer Nozzle
Max. Temperature	140° F		

ACCESSORY KITS

I 1/4" ProVac Vacuum Kits (PVR Series)

Kit Name	Floor Tool	Description	Hose	Wand
A1	601529	12" Combo	601102	601910
A2	601323	12" Brush/Brush	601102	601910
A3	35020	15" Sidewinder	601102	601910
A5	601239	12" Free Flo	601102	601910
A300 T	601227	12" Air Turbo	601102	601910

I 1/2" ProVac Vacuum Kits (PVR Series)

Kit Name	Floor Tool	Description	Hose	Wand
B0	602137	12" Combo	602103	602917
B2	602383	12" Brush/Brush	602103	602917

I 1/4" NuSave Vacuum Kits (NSP / NSR Series)

Kit Name	Floor Tool	Description	Hose	Wand
E1X	601670	12" Special Combo	601102	601110
AE1	601670	12" Special Combo	601102	601910

I 1/4" ProSave Vacuum Kits (PSP / NVH Series)

Kit Name	Floor Tool	Description	Hose	Wand
A1X	601529	12" Combo	601102	601110
A2X	601323	12" Brush/Brush	601102	601110
A3X	35020	15" Sidewinder	601102	601110
A5X	601239	12" Free Flo	601102	601110
A300 XT	601227	12" Air Turbo	601102	601110
A350 E	Electric Brush	14" Electric Brush	124962	

I 1/4" Battery Canister Vacuum Kit (NBV Series)

Kit Name	Floor Tool	Description	Hose	Wand
E2X	601570	11" Special Combo	601101	601110

I 1/4" Backpack Vacuum Kits (RSV Series)

Kit Name	Floor Tool	Description	Hose	Wand
A0XB	601529	12" Combo	601100	601110
A2XB	601323	12" Brush/Brush	601100	601110
A#XB	35020	15" Sidewinder	601100	601110
A5XB	601239	12" Free Flo	601100	601110
A300 TXB	601227	12" Air Turbo	601100	601110



12" COMBO



12" BRUSH / BRUSH



15" SIDEWINDER



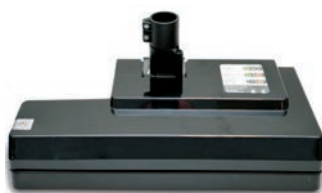
11" SPECIAL COMBO



12" FREE FLO



12" AIR TURBO



14" ELECTRIC BRUSH



29" WET TOOL



12" SPECIAL COMBO



12" WET TOOL



16" WET TOOL



16" BRUSH/HARD FLOOR

1 1/2" Backpack Vacuum Kits (RSV Series)

Kit Name	Floor Tool	Description	Hose	Wand
B0XB	602137	12" Combo	602100	602717
B2XB	602383	12" Brush/Brush	602100	602717
B3XB	35163	15" Sidewinder	602100	602717

1 1/4" Battery Backpack Vacuum Kit (RBV Series)

Kit Name	Floor Tool	Description	Hose	Wand
E2XB	601570	11" Special Combo	601100	601110

1 1/4" Wet/Dry Vacuum Kits (WV370 / WV470)

Kit Name	Floor Tool	Description	Hose	Wand
A11	601322	12" Brush/Brush	601012	601910
	601323	12" Wet Tool		

1 1/2" Wet/Dry Vacuum Kits (900 Series)

Kit Name	Floor Tool	Description	Hose	Wand
B0W	602137	12" Combo	602103	602917
	602380	16" Wet Tool		
BB8	602381	16" Brush-Hard Floor	602103	602917
	602380	16" Wet Tool		

1 1/2" Wet Vacuum Kits (900 and 1800 Series)

Kit Name	Floor Tool	Description	Hose	Wand
BB7	602380	16" Wet Tool	602103	602917

29" Front Mount Squeegee Kits (900 and 1800 Series)

Kit Name	Floor Tool	Description	Hose	Wand
C2	607476	29" Wet Tool		
C3A	602380	29" Wet Tool		

29" Front Mount Combo Kits (900 / 1800 Series)

Kit Name	Floor Tool	Description	Hose	Wand
C2 Combo	607476	29" Wet Tool	601102	601110
(900 Series)	602380	16" Wet Tool		
C3A Combo	606676	29" Wet Tool	601102	601110
(1800 Series)	602380	16" Wet Tool		

FILTRATION

		HD14/18	NBV180/220	RBV130	PSP200	PSP380	NSP200	NSR200	PVR200	PVR380	PVR390	RSV130	RSV200	PVR 320H	NVQ900H	WVD902H
LEED-EB compliant	98.6% efficient at 0.5 microns with a noise level of less than 70 dBA	•	•	•	•	•	•	•	•	•	•	•	•	•	•	•
HEPA for non-hazardous	Safe for non-hazardous material pick-up. Improves IAQ by filtering 99.97% of particulates at 0.3 microns.		•	•				•	•	•	•	•	•			
Certified HEPA filtration for hazardous use	<ul style="list-style-type: none"> • Every unit is tested and certified. • Sealed filter chamber. • Meets European standard 3928 for hazardous material recovery. 														•	•
Uses recyclable or re-usable packaging	All packaging can be recycled or re-used.	•	•	•	•	•	•	•	•	•	•	•	•	•	•	•
Reduced power consumption	Uses 50%+ less power on low speed.				•	•	•	•	•	•	•			•		
CRI Approved	This program tests for proper soil removal, filtration and carpet texture retention.	•		•	•	•	•	•	•	•	•	•	•	•	•	•

Professional Cleaning Equipment



NACECARE RBV 130
BATTERY BACKPACK



RBV I 30



- As daytime cleaning becomes even more prevalent the RBV 130 will certainly play a key role for our clients
- A 1.5 gallon tank provides the capacity required to do the job
- The 250 watt vacuum motor with run time of 45 minutes ensures there is plenty of power and operational capacity
- The 36 volt lithium ion battery can be interchanged with our canister units and charges in 2.5 hours.
- At 16 pounds the RBV 130 is compact, comfortable and light enough for anyone to use
- Its patented ribs on the inside of the tank ensure no matter how full the bag is we don't lose suction since the bag is never allowed to seal against the side of the tank cutting off the flow of air.
- This is critical on battery powered equipment since we don't have the luxury of high powered electric vacuum motors to pull the dirt through the bag.

Specifications

RBV I 30

Vac Motor	250 watt
Run Time	45 Minutes
Charge Time	2.5 Hours
Performance - Water Lift	45"
Performance - Airflow	50 CFM
Filtration	99.97% efficiency @ 0.3 micron
Capacity	1.5 Gallon
Weight	16 lbs.
Noise Level	45 dBa.



1205 Britannia Road East,
Mississauga, Ontario, L4W 1C7

1.800.387.3210 TOLL-FREE

1.800.709.2896 FAX

www.nacecare.com

Professional Cleaning Equipment



NACECARE NBV 180 / NBV 220
BATTERY VACUUMS



NBV 180 / NBV 220



- Outstanding for daytime cleaning
- With 2 and 3 gallon tanks the NBV 180 and NBV 220 both offer plenty of capacity
- A 250 watt vacuum motor and run time of 45 minutes ensures there is plenty of power to get the job done
- The 36 volt lithium ion battery can be interchanged between both units, it charges in 2.5 hours.
- Weighing in at only 14 pounds the NBV 180 is compact and lightweight with a durable polyethylene tank
- At 20 lbs. The NBV 220 incorporates all the features of our popular and very innovative PVR 390 vac including a structural foam tank for durability and built in cart allowing easy transport of a second battery should it be required.

Specifications

NBV 180

NBV 220

Vac Motor	250 watt	250 watt
Run Time	45 Minutes	45 Minutes
Charge Time	2.5 Hours	2.5 Hours
Performance - Water Lift	45"	45"
Performance - Airflow	50 CFM	50 CFM
Filtration	99.97% efficiency @ 0.3 micron	
Capacity	2 Gallon	3 Gallon
Weight	14 lbs.	19.5 lbs.
Noise Level	45 dBa.	45 dBa.



1205 Britannia Road East,
Mississauga, Ontario, L4W 1C7

1.800.387.3210 TOLL-FREE

1.800.709.2896 FAX

www.nacecare.com



Vacuums



*Carts &
Mopping
Systems*



Floor Care

CARPET CARE SYSTEMS



OVERVIEW

Carpet Maintenance Overview

The starting point of any successful maintenance program is selecting quality products and systems that meet the performance and appearance requirements of your facility. Properly maintained carpet enhances a facility's appearance, improves indoor air quality and contributes to occupant satisfaction.

Proper maintenance also protects the capital investment by extending the carpet's life. The carpet mills and the Carpet & Rug Institute recommend three levels of cleaning activity with frequencies based on carpet type and traffic conditions. NaceCare is dedicated to providing the most cost-effective solutions for maintaining your carpet and the image of your facility.



Daily Maintenance

Vacuum and Spot Removal

The single most effective and economical way to extend carpet life is daily vacuuming. It removes 90 percent of all dry and abrasive soil. Daily visual inspection also ensures spots are removed before they become stains.

Restorative Maintenance

Hot Water Extraction (HWE)

Deep cleaning removes embedded dry soil, oily substances and any residue build-up that can damage fibers and reduce carpet life. The carpet's appearance is restored by injecting water into the fibers, agitating them to loosen soil and extracting the soiled solution into a recovery tank. Pre-spray and extraction solution used should contain sustainable formulas with a pH factor under 9.

Interim Maintenance

Encapsulation and Traffic Spotting

An effective program always includes pre-established cleaning frequencies with the goal of maintaining the highest possible level of appearance at the lowest overall cost between wet-extraction cleanings.

Low-moisture encapsulation is carpet mill recommended since it combines pile-lifting and interim cleaning into a single step, saving time and labor. A brush assisted walk behind or twin cylindrical brush machine performs both applications with carpets drying in 30–60 minutes.

DAILY MAINTENANCE



Upright HD 14

Lightweight and durable, the HD 14/18 combines dual-motor performance and optional HEPA filtration, making it the best option for daily carpet maintenance. The ergonomic design and lightweight construction ensure it is easy to maneuver and an ideal choice for building service contractors and in-house cleaning professionals. The Carpet and Rug Institute (CRI) has certified the HD 14/18 to meet its stringent requirements for soil removal, dust filtration and appearance retention.



Backpack RBV 130

Both NaceCare models, the RSV 130 and RSV 200, are powered by commercial 1.6 hp motors offering over 114 cfm of airflow. They provide a four-stage filtration system that captures 99.97 percent of dust particles to 0.3 microns. Adjustable waist and shoulder straps are designed for maximum comfort and the swivel hose fittings ensure tangle-free operation. It's also available in a battery-powered version for daytime cleaning. The RBV 130 has 45 minutes of run time, weighs 16 pounds and has a quick-change battery.



Canister HENRY PVR 200

NaceCare provides our industry's quietest vacuums at 47/49 dB. All units have a powerful 1.6 hp vacuum motor with 110 inches of lift and 114 cfm of airflow for excellent soil recovery. Equipped with a Microtex filter and HEPA-Flo bag as standard, they filter down to 0.3 microns at 99.97 percent efficiency. They are available with a variety of tools for carpet or hard floor care and optional electric or air turbo power heads are available for improved agitation.

NaceCare also offers the NBV 180/220 battery canister vacuums for daytime cleaning. Both units have 45-minute run time, 2.5-hour charge time and a quick change-out battery system.



NaceCare upright and canister vacuums meet the stringent certification requirements for the Carpet and Rug Institute (CRI).

DAILY MAINTENANCE

Spotting Extractors

The GVE 370, with its powerful 1.3 hp vacuum motor and two-year warranty, is ideal for spotting, upholstery cleaning and vehicle detailing. With 100-inch water lift, 95 cfm of airflow and a 30 psi pump, George provides excellent water recovery and won't over-wet fabrics. The 1.6-gallon recovery tank comes with a handy carrying handle for dumping.

The AV 4X and AVB 4X are lightweight and easy to transport. The ergonomic adjustable handle height has a twist grip solution control providing 60 psi of solution.

The 1.3 hp vacuum motor, with 100-inch water lift and 106 cfm of airflow, provides excellent water recovery and the squeegee attachment on the vacuum shoe allows for hard floor cleaning.

Additionally, the AVB 4X is fitted with a heavy-duty cylindrical 600 rpm brush for agitation and superior cleaning results.

The TP 4X has 120" of waterlift making it excellent for carpet spotting and upholstery cleaning. It has a 60 psi pump and comes with an 8' solution/vacuum hose and hand tool, an optional extraction wand and cart are also available.



GVE 370 "George"



AVB 4X



AV 4X



TP 4X

Shown with optional cart

Model	GVE 370	AVB 4X	AV 4X	TP 4X
Vacuum Motor	1,000W, 1.3 hp 2 stage	1000W, 1.3 hp 2 stage	1,000W, 1.3 hp 2 stage	1,500W, 2 hp 2 stage
Airflow	95 cfm	106 cfm	106 cfm	106 cfm
Water Lift	100"	100"	100"	120"
Pump: Pressure	30 psi	60 psi	60 psi	60 psi
Pump: Power	30W	70W	70W	70W
Capacity: Solution	1.6 gal.	4.0 gal.	4.0 gal.	4.0 gal.
Capacity: Recovery	1.6 gal.	4.0 gal.	4.0 gal.	4.0 gal.
Cleaning Width	4" / 10.5"	4" / 11"	11"	4"
Weight	19 lbs.	46 lbs.	29 lbs.	27 lbs.
Power Cord	42'	33'	33'	33'

INTERIM



DP 340



Clean right to the edge of walls



DP 420



Optional escalator kit for the DP 420

DUPLEX

Replace Bonnet Cleaning From restorative to interim with a low-moisture solution

Clean virtually any floor surface: carpet, grouted floors and ceramic, rubberized floors and even escalators are no obstacle for the Duplex. Simply fill the solution tanks and squeeze the trigger to feed cleaning solution onto the twin counter-rotating brushes. The conveyors recover the dirty water, depositing it in the central recovery tank, or you can choose to double scrub the area and pick up the water later.

The brushes work right to the edge of the machine and into difficult areas. With its unique 800,000 bristles counter-rotating at 780 rpm, the Duplex is a carpet cleaner's dream for both high-traffic restorative cleaning and situations requiring low-moisture interim maintenance. It's virtually impossible to over-wet a carpet using the Duplex, and carpets will dry easily in under 30 minutes.

It replaces bonnet cleaning as the mainstay in any interim carpet-maintenance program. Not only does it do a better job, it's faster! Brush options include two grades of black brushes for aggressive scrubbing. Grey is the standard all-purpose brush and yellow is for sensitive carpet areas.

Model	DP 340	DP 420
Cleaning Path	11"	14"
Solution Tank	1.1 gal.	1.6 gal.
Recovery Tank	0.75 gal.	1 gal.
Brush Speed	780 rpm	780 rpm
Brush Pressure (Max)	48 lbs.	57 lbs.
Brush Motor	1000W/1.3 hp	1000W/1.3 hp
Power Cord	35 ft.	35 ft.
Weight	48 lbs.	57 lbs.



Profiled Rubber and Ceramic



Carpet



Escalator

INTERIM RESTORATIVE

Walk Behind Extractors

AV 18AX

With large 18-gallon tanks and a 3/4 hp drive motor, the Avenger AV 18AX can tackle even the biggest commercial job. Other key features include rotationally molded polyethylene tanks and an easy-access removable spray bar with twist-off jets. The powerful 1.8 hp, three-stage vacuum motor provides 135-inch water lift and 95 cfm of airflow while the 130 psi pump allows for a variable flow rate up to 1.2 gpm.

With the optional patented onboard "Smart Kit," the pump can be used as an automatic pre-spray system with the chemical injected downstream (of the pump) so only water flows through it, preventing any buildup. The Smart Kit ensures no mixing of chemicals is required and the dilution is always correct. It also allows the unit to be used in "low-flow mode" for interim cleaning and faster drying times.

Its efficient forward motion allows upwards of 4,000 sq. ft. per hour to be cleaned, three times the rate of pullback self-contained units, while the lockdown vacuum shoe ensures consistent pressure and excellent soil recovery at all times.



AV 18AX



MODEL

AV 18AX

Vacuum Motor	3 stage, 1.8 hp
Airflow	95 cfm
Water Lift	135"
Brush Motor	100W / .13 Hp
Brush Speed	600 rpm
Drive Motor	0.75 hp
Cleaning Width	20"
Pump Type	diaphragm w/bypass
Weight	143 lbs.
Power Cord	50'

Capacity: Solution	18 gal.
Capacity: Recovery	18 gal.
Pump: Power	100W
Pump: Pressure	130 psi
Pump: Flow	0-1.2 gpm



AV 18SX



Walk Behind Extractors

AV 18SX

The large 18-gallon tanks and the efficiency of a forward-moving machine enable it to tackle even the biggest commercial jobs. The upper and lower tanks detach for easier transport and the easy-access removable spray bar has twist-off jets. The powerful 1.8 hp, three-stage vacuum motor provides 135 inches of water lift and 95 cfm of airflow while the 130 psi pump provides 1.2 gpm of flow. The spring-loaded vacuum shoe is adjustable, ensuring consistent pressure and pickup on different carpet thicknesses and uneven floors. For hard floors, the carpet shoe is easily substituted with an optional squeegee.

With the optional patented onboard "Smart Kit," the pump can be used as an automatic pre-spray system with the chemical injected downstream (of the pump) so only water flows through it, preventing any buildup. The Smart Kit ensures no mixing of chemicals is required and the dilution is always correct. It also allows the unit to be used in "low-flow mode" for interim cleaning and faster drying times.

Cleaning at a rate upwards of 4,000 sq. ft. per hour, nearly three times that of standard pull-back extractors, and with less operator fatigue make the AV 18SX an outstanding choice. Optional features include the Smart Kit, hard floor squeegee and HT 1800 in-line heater.

OPTIONAL HARD FLOOR SQUEEGEE FOR MODEL AV 12QX

Simply remove the carpet shoe, fit the squeegee attachment and lower the brush housing to the lowest position to enable cleaning of your hard floor surfaces.

MODEL

AV 18SX

Vacuum Motor	1400W, 1.8 hp, 3 stage
Airflow	95 cfm
Water Lift	135"
Brush Motor	100W / .13Hp
Brush Speed	600 rpm
Cleaning Width	20"
Weight	140 lbs.
Pump Type	diaphragm w/bypass

Pump: Power	100W
Pump: Pressure	130 psi
Pump: Flow	0-1.2 gpm
Capacity: Solution	18 gal.
Capacity: Recovery	18 gal.
Power Cord	50'

Quiet Walk Behind Extractors

AV 12QX

Running under 60 dB, the AV 12QX is an excellent choice for any 24-hour facility, especially in the hospitality and health-care industries. The AV 12QX is constructed of polyethylene and features a 130 psi pump providing a flow rate up to 1.2 gpm. The powerful 1.8 hp, three-stage vacuum motor provides 135-inch water lift and 95 cfm of airflow. The spring-loaded vacuum shoe is adjustable, ensuring consistent pressure and pickup on different carpet thicknesses and uneven floors. For hard floors, the carpet shoe is easily substituted with an optional squeegee.

With the optional patented onboard "Smart Kit," the pump can be used as an automatic pre-spray system with the chemical injected downstream (of the pump) so only water flows through it, preventing any buildup. The Smart Kit ensures no mixing of chemicals is required and the dilution is always correct. It also allows the unit to be used in "low-flow mode" for interim cleaning and faster drying times.

Cleaning at a rate upwards of 4,000 sq. ft. per hour, nearly three times that of standard pull-back extractors, and with less operator fatigue make the AV12 QX an outstanding choice. Optional features include the Smart Kit, hard floor squeegee and HT 1800 in-line heater.

OPTIONAL HARD FLOOR SQUEEGEE FOR MODEL AV 12QX

Simply remove the carpet shoe, fit the squeegee attachment and lower the brush housing to the lowest position to enable cleaning of your hard floor surfaces.



Shown with optional Smart Kit

AV 12QX



MODEL

AV 12QX

Vacuum Motor

1,400W, 1.8 hp, 3 stage

Airflow

95 cfm

Water Lift

135"

Brush Motor

100 W / .13 hp

Brush Speed

600 rpm

Cleaning Width

20"

Pump Type

diaphragm w/bypass

Weight

121 lbs.

Power Cord

50'

Sound Level

60 dB(A)

Pump: Power

100W

Pump: Pressure

130 psi

Pump: Flow

0-1.2 gpm

Capacity: Solution

12 gal.

Capacity: Recovery

12 gal.



AVB 9X

Pull-Back Extractor AVB 9X

With a sound level of only 60 dB, the AVB 9X can be used in even the most sensitive areas. It is constructed of rotationally molded polyethylene and features a 130 psi pump providing a flow rate of 1.2 gpm. The powerful 1.8 hp, three-stage vacuum motor provides 135-inch water lift and 95 cfm of airflow.

The AVB 9X is well balanced and easy to use; the 16-inch brush ensures it can handle the toughest of jobs. The high water lift motor provides excellent water recovery; in most cases carpets can dry in less than one hour. The float shut-off ensures water never reaches the vacuum motor and the five jet spray bar provides a consistent spray pattern with no streaking.

Brush pressure is fully adjustable for different types of carpet and the powerful brush motor ensures excellent agitation. The water flow rate is variable, allowing for low-moisture or full restoration cleaning. The AVB 9X truly is the market leader in pull-back extractors.

MODEL

AVB 9X

Vacuum Motor	1,400W, 1.8 hp, 3 stage
Airflow	95 cfm
Water Lift	135"
Brush Motor	90W, .12 hp
Brush Speed:	600 rpm
Cleaning Width	16"
Pump Type	diaphragm w/bypass
Weight	95 lbs.
Power Cord	50'
Sound Level	60 dB(A)

Pump: Power	100W
Pump: Pressure	130 psi
Pump: Flow	0-1.2 gpm
Capacity: Solution	9 gal.
Capacity: Recovery	9 gal.

RESTORATIVE

Tempest® Box Extractors

Our Tempest box extractors are lightweight and easy to transport. Constructed of rugged polyethylene, the upper and lower tanks detach into two separate units for easier transport.



TP 8X

At only 49 lbs., the TP 8X is light and easy to transport, yet has all the power of a full-size extractor. With its 130 psi pump and 20-foot vacuum and solution hoses, the TP 8X is ready to tackle even the largest of jobs.



Shown with optional Smart Kit

TP 18SX



Shown with optional Smart Kit

TP 18DX

Both the TP 18SX and TP 18DX are premium extractors featuring a 130 psi pump with 1.2 gpm of water flow. Their 18-gallon polyethylene tanks are designed to clean large areas. The SX has 95 cfm of airflow and the DX is equipped with 212 cfm. Both units come complete with a 20-foot solution/vacuum hose and a three-jet wand.

MODEL	TP 8X	TP 18SX	TP 18DX
Vacuum Motor	1,500W, 2 hp 2 stage	1,400W, 1.8 hp 3 stage	2-1,000W, 1.3 hp 2 stage
Airflow	106 cfm	95 cfm	212 cfm (max.)
Water Lift	120"	135"	100"
Pump: Type	diaphragm w/bypass	diaphragm w/bypass	diaphragm w/bypass
Pump: Pressure	130 psi	130 psi	130 psi
Pump: Flow	1.2 gpm	1.2 gpm	1.2 gpm
Pump: Power	100W	100W	100W
Capacity: Solution	8 gal.	18 gal.	18 gal.
Capacity: Recovery	8 gal.	18 gal.	18 gal.
Weight	49 lbs.	92 lbs.	95 lbs.
Power Cord	33'	33'	33'

RESTORATIVE



Shown with
optional Smart Kit

TP 18SX-HP



HT 1800 Heater

Tempest® High Pressure Box Extractors

For the professional carpet cleaner, the TP 18SX-HP features a 400 psi piston pump with 1.25 gpm of flow and large 18-gallon tanks. With the patented onboard "Smart Kit" as standard equipment, the pump can be used as an automatic pre-spray system with the chemical injected downstream (of the pump) so only water flows through it, preventing any buildup.

The TP18SX-HP's 1.8 hp, three-stage vacuum motor provides 135-inch water lift and 95 cfm of airflow, ensuring excellent soil recovery and faster drying times. The onboard storage of hoses and wand plus detachable tanks provide easy transport from job to job. It comes complete with a 20-foot solution/vacuum hose and a three-jet wand.

OPTIONAL HEATER

Available for TP 8X, TP 18SX, TP 18SX-HP, TP 18DX, AV 12QX AV 18AX and AV 18SX models, the HT 1800 in-line heater conveniently mounts to the rear part of the machine. The heating element has an operating and hi-limit thermostat for safety. Water can be heated in-line; however, higher temperatures can be achieved with the pre-heating function.

MODEL	TP 18SX-HP
Vacuum Motor	1,400W, 1.8 hp 3 stage
Airflow	95 cfm
Water Lift	135"
Pump: Type	dual piston w/bypass
Pump: Pressure	400 psi
Pump: Power	180W, 0.25 hp
Pump: Flow	1.25 gpm
Capacity: Solution	18 gal.
Capacity: Recovery	18 gal.
Weight	176 lbs.
Power Cord	33'

MODEL	HT 1800		
Power	1,800W		
Voltage	120V, 50/60Hz		
Power Cord	50'		
Dimensions:	L-4.3" / W-6.3" / H-13.3"		
Weight	14 lbs.		
Temperature	160° F (max.)		
Pre-heating	8 gal.	12 gal.	18 gal.
15° F Increase	7 min.	10 min.	15 min.
In-line heating	Hand tool	3-jet wand	
Temp	114° F	100° F	50% flow
	76° F	66° F	75% flow
	57° F	50° F	100% flow

CHEMICAL

Pre-Spray Smart Kit

The Smart Kit is an option for the TP 8, TP 18SX/DX, AV 12QX, AV 18SX/AX and is standard on the TP 18SX-HP. Heavily soiled areas such as traffic lanes, pivot areas in front of elevators and entrances require additional chemical dwell time to emulsify and loosen compacted soil. The Smart Kit uses the extractor pump to dispense an onboard chemical through a 33-foot pre-spray hose and heavy-duty spray wand. The Smart Kit applies the traffic lane cleaner consistently and uses 50 percent less labor than conventional hand pump-up sprayers or electric sprayers.

Chemicals Just For Carpet

NaceCare Solutions Just For Carpets is a multi-use carpet chemical formulated to meet the cleaning requirements for the new generation of synthetic carpet construction and delicate wool fibers. This neutral pH chemistry is especially designed for extraction, encapsulation, bonneting and traffic lane cleaning and it is safe to use on wool carpets. It has outstanding soil-removal qualities and won't leave a sticky residue that can cause rapid re-soiling. Just For Carpets meets sustainability requirements, using low VOCs, no dyes, no perfumes and safe surfactants.

- Twin Cylindrical Brush Encapsulation: Dilute 8 oz. per gallon
- Traffic Lane Cleaner: Dilute 8 oz. per gallon
- Extraction: Dilute 2 oz. per gallon

Just For Spots

Just for Spots is a water-based general spotter formulated to remove 90 percent of most spots in carpets. This ready-to-use, 32 oz. bottle is safe to use for general spot cleaning without harming carpet fibers or causing re-soiling. Simply apply onto a spot and blot with a white terry cloth towel or remove with a spotting machine or extractor.



Recognized for Safer Chemistry www.epa.gov/dfe



1205 Britannia Road East,
Mississauga, Ontario, L4W 1C7

1.800.387.3210 TOLL-FREE

1.800.709.2896 FAX

www.nacecare.com



Pre-spraying with
our Smart Kit

AV12QX w/Smart Kit



Just For Carpets



Just For Spots



Just For Grease

Just For Grease

Just For Grease is a safe, easy-to-use product for removing grease and oil-based stains from carpet. It is effective on paint, oil and grease without the dangers associated with harsh solvents and volatile organic compounds (VOCs). It is conveniently packaged in a 32 oz., ready-to-use bottle. Simply apply onto a spot and blot with a white terry cloth towel or remove with a spotting machine or extractor.

Just for Carpets and Just for Spots formulations are certified by the Carpet and Rug Institute (CRI) and meet sustainability requirements for the EPA Design for the Environment (DfE) stewardship program.





Vacuums



Carpet Care



Floor Care

CARTS & MOPPING SYSTEMS



MOPPING TROLLEYS

General Features

- Twin buckets ensure far less cross-contamination. The water remains cleaner reducing water changes and usage resulting in an increase in area cleaned.
- Trolleys have a lower tray for two 10-quart buckets and an upper one for two 6-quart ones.

VMW 2215 | MOPPING TROLLEY

- Adjustable wringer plungers on the wide wringer allow for use with or without the foam pad.
- The wide wringer is more efficient than other wringers as it does not require folding/unfolding of the mop.

VMV 2222 | MOPPING TROLLEY

- Vertical wringers can accept both flat folding mops and string mops.

MOPMATIC TROLLEY

- A unique mop preparation system provides a constant supply of clean, uniformly impregnated mops.
- Whether you need to disinfect or just clean, MopMatic leaves nothing to chance.
- The blue bucket stores the clean, charged mops while the red bucket stores the dirty ones.

DM 2416 | MOPPING TROLLEY

- The DM 2416 is an ergonomic winner! Simply step on the pedal and wring out your mop.
- Vertical wringers can accept both flat folding mops and string mops.



PN - 8028010

VMW 2215

Optional buckets available

- Top Shelf - 3 x 4-quart or 2 x 6-quart
Lower Shelf - 2 x 10-quart



PN - 8028020

VMV 2222

Optional buckets available

- Top Shelf - 3 x 4-quart or 2 x 6-quart
Lower Shelf - 2 x 10-quart



PN - 8028000

MopMatic Trolley

Optional buckets available

- Top Shelf - 3 x 4-quart or 2 x 6-quart
Lower Shelf - 2 x 10-quart



PN - 758279

DM 2416



PN - 758502 + 627748

VCN 1604

Shown with BK3 WIDE WINGER KIT

- Included with cart - 2 x 10-quart
Optional 4 x 5-quart



PN - 758502 + 627747

VCN 1604

Shown with BK2 STANDARD WRINGER KIT

- Included with cart - 2 x 10-quart
Optional 4 x 5-quart

The NPT 1605 is a compact cart with all the features of the VCN 1604 plus

- Twin 30-gallon vinyl waste bags allow for easy separation of waste and adherence to recycling and color-coding programs.
- Each bag has a separator included, allowing up to 4 different types of waste separation.
- The 1605 comes complete with 5-quart color-coded buckets.

JANITOR CART

VCN 1604 & NPT 1605 Features

- Carts are structural foam with corner bumpers, removable/washable trays and non-marking 5" ball-bearing castors.
- They come with a zippered vinyl waste bag allowing for easy waste removal without lifting.
- The push handle and lower tray can be collapsed for easier storage.



PN - 758502 + 629113

VCN 1604

Shown with BK10 MOPMATIC KIT

- Included with cart - 2 x 10-quart
Optional 4 x 5-quart



PN - 759191

NPT 1605

- Included with cart 4 x 5-quart
Optional 2 x 10-quart

À LA CARTE PROGRAM

NC 3000 & NC 4000 Features

- Carts are structural foam with corner bumpers, removable/ washable trays and non-marking 5" ball-bearing castors.
- Both units are **JCAHO COMPLIANT**: Locking cabinet doors and waste cover.
- Locks are a standard feature.
- The **NC 3000** includes 4 removable trays and a pedal-activated, enclosed 30 gallon waste container.
- The **NC 4000** has 5 removable trays and 1 shelf for maximum storage.

DETACHABLE MOPPING SYSTEMS

- Twin buckets (standard on the **NCK 100 and 200**) reduce cross-contamination, ensuring the clean water remains cleaner longer.
- The **NCK 100** has a standard wringer that can accept both folding flat mops and string mops.
- The **NCK 200** features a wide mop wringer, which is more efficient as it does not require folding / unfolding of the mop.
- Adjustable wringer plungers allow for use with or without the foam pad.

MOPMATIC

- Attached directly to the cart, MopMatic features a unique mop preparation system which provides a constant supply of clean, uniformly impregnated mops or microfiber cloths.
- Whether you need to disinfect or just clean, MopMatic leaves nothing to chance.
- The blue bucket stores the clean, impregnated mops while the red bucket stores the dirty ones.

DETACHABLE AND MOUNTED WASTE SYSTEMS

- They come with a zippered vinyl waste bag, allowing for easy waste removal without lifting.
- The **NCK 300 AND 400** can be detached from the cart where required.



PN - 759131

NC 3000

- Included with cart 2 x 6-quart
Optional 3 x 4-quart



PN - 759160

NC 4000

- Included with cart 2 x 6-quart
Optional for Small tray - 3 x 4-quart
Optional for Large tray - 4 x 5-quart or 2 x 10-quart

The À LA CARTE PROGRAM from NaceCare allows you to custom build our carts to suit your specific needs. Simply choose your base, and then add on your kit and accessories.

JCAHO COMPLIANT UNDER STANDARDS EC.1.20, IC.3.10, IC.1.10, EC.4.10

À LA CARTE KITS



NCK 100

- 759126 - standard wringer mopping trolley



NCK 200

- 759127 - wide wringer mopping trolley



NCK 700

- 629569 - 3-bucket MopMatic pre-charging system



NCK 300

- 759123 - 30-gallon waste module



NCK 400

- 759124 - 2 x 30-gallon waste module



NCK 500

- 629639 - 30-gallon on-board waste module

CHARGING BUCKET SYSTEM

Pre-charged Cleaning System Top-bucket Cleaning

The PCS cleaning system uses modern cleaning tools and microfiber textiles configured to enhance cleaning. Traditional spray-and-wipe cleaning causes workers to inhale atomized chemicals and may have a negative impact on indoor air quality for building occupants. Purchasing trigger sprayer bottles, affixing instruction labels and managing regulatory compliance can also be cumbersome and costly. PCS has a cost-effective alternative to improve this process. A color-coded top-bucket system with lids allows workers to use pre-moistened microfiber cloths for above-the-floor cleaning. The worker inserts 15, 25 or 40 cloths into the bucket and adds the proper amount of diluted chemical into the bucket. The cloths absorb the chemical and become pre-moistened for cleaning all types of horizontal and vertical surfaces.



Pre-charged Flat Mop System

The traditional mop-and-bucket approach to cleaning floors not only causes cross-contamination, but it also increases water usage and labor inefficiencies related to unnecessary travel time to water closets. Using inefficient string mops leads to soil buildup, unsightly appearance issues and unpleasant odors.

With the PCS pre-charged flat mop system, 10 microfiber flat mops are inserted into a durable, injection molded bucket with a lid. The worker adds chemical to the bucket, snapping the lid to make it watertight.

Pre-charged Cleaning System Benefits

- Decreased cross-contamination
- Reduced water and chemical usage
- Consistent appearance levels
- Reduced worker exposure and injuries
- Increased productivity
- Enhanced floor safety
- Reduced capital expenditure and replacement cost
- Meet green cleaning requirements
- Improved Indoor Air Quality
- Simplified training



SYSTEM ACCESSORIES



Linen Cart for NC Series

759144 - Includes all hardware and vinyl zipper bag



(Henry not included)

Vacuum Trays for NC Series

629652 - Vacuum tray for NC series
629879 - Includes spray mop, tray and hardware



Microfiber Cloth Wringer

627695 - Microfiber cloth wringer



4-Quart Buckets

629532 - Red 629534 - Green
629533 - Blue 629535 - Yellow



5-Quart Buckets

628001 - Red 628003 - Green
628002 - Blue 628004 - Yellow



6-Quart Buckets

628183 - Red 627909 - Green
628184 - Blue 627910 - Yellow



4-Quart Buckets With Lids

629760 - Red 629763 - Green
629761 - Blue 629762 - Yellow



5-Quart Buckets With Lids

629185 - Red 629187 - Green
629186 - Blue 629188 - Yellow



6-Quart Buckets With Lids

629181 - Red 629183 - Green
629182 - Blue 629184 - Yellow

SYSTEM ACCESSORIES



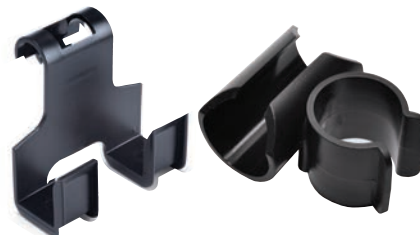
10-Quart Buckets

628011 - Red 628013 - Green
628012 - Blue 628014 - Yellow



MopMatic Charging Bucket

629115 - 3.5 gallon blue charging bucket
629118 - 2.5 quart MopMatic fill bottle



Clamp on Nooks

628276 - Clamp 25mm (1")
628277 - Clamp 32mm (1 1/4")
628378 - Wet floor sign hook



10-Quart Buckets With Lids

629177 - Red 629179 - Green
629178 - Blue 629180 - Yellow



MopMatic Soiled Mop Bucket

629116 - 5.5 gallon MopMatic
red soiled mop bucket



Hanging Nooks

628451 - Nook 22mm (3/4")
628450 - Nook 25mm (1")
628449 - Nook 32mm (1 1/4")



Pocket Mop

8020059 - Pocket mop
(Includes 1 looped mop head)



Folding Flat Mop

8020060 - Folding flat mop
(Includes 1 looped mop head)



Velcro Flat Mop

8020063 - Velcro flat mop
(Includes 1 looped mop head)



Vacuums



*Carts &
Mopping
Systems*



Floor Care

CARPET CARE SYSTEMS



OVERVIEW

Carpet Maintenance Overview

The starting point of any successful maintenance program is selecting quality products and systems that meet the performance and appearance requirements of your facility. Properly maintained carpet enhances a facility's appearance, improves indoor air quality and contributes to occupant satisfaction.

Proper maintenance also protects the capital investment by extending the carpet's life. The carpet mills and the Carpet & Rug Institute recommend three levels of cleaning activity with frequencies based on carpet type and traffic conditions. NaceCare is dedicated to providing the most cost-effective solutions for maintaining your carpet and the image of your facility.



Daily Maintenance

Vacuum and Spot Removal

The single most effective and economical way to extend carpet life is daily vacuuming. It removes 90 percent of all dry and abrasive soil. Daily visual inspection also ensures spots are removed before they become stains.

Restorative Maintenance

Hot Water Extraction (HWE)

Deep cleaning removes embedded dry soil, oily substances and any residue build-up that can damage fibers and reduce carpet life. The carpet's appearance is restored by injecting water into the fibers, agitating them to loosen soil and extracting the soiled solution into a recovery tank. Pre-spray and extraction solution used should contain sustainable formulas with a pH factor under 9.

Interim Maintenance

Encapsulation and Traffic Spotting

An effective program always includes pre-established cleaning frequencies with the goal of maintaining the highest possible level of appearance at the lowest overall cost between wet-extraction cleanings.

Low-moisture encapsulation is carpet mill recommended since it combines pile-lifting and interim cleaning into a single step, saving time and labor. A brush assisted walk behind or twin cylindrical brush machine performs both applications with carpets drying in 30–60 minutes.

DAILY MAINTENANCE



Upright HD 14

Lightweight and durable, the HD 14/18 combines dual-motor performance and optional HEPA filtration, making it the best option for daily carpet maintenance. The ergonomic design and lightweight construction ensure it is easy to maneuver and an ideal choice for building service contractors and in-house cleaning professionals. The Carpet and Rug Institute (CRI) has certified the HD 14/18 to meet its stringent requirements for soil removal, dust filtration and appearance retention.



Backpack RBV 130

Both NaceCare models, the RSV 130 and RSV 200, are powered by commercial 1.6 hp motors offering over 114 cfm of airflow. They provide a four-stage filtration system that captures 99.97 percent of dust particles to 0.3 microns. Adjustable waist and shoulder straps are designed for maximum comfort and the swivel hose fittings ensure tangle-free operation. It's also available in a battery-powered version for daytime cleaning. The RBV 130 has 45 minutes of run time, weighs 16 pounds and has a quick-change battery.



Canister HENRY PVR 200

NaceCare provides our industry's quietest vacuums at 47/49 dB. All units have a powerful 1.6 hp vacuum motor with 110 inches of lift and 114 cfm of airflow for excellent soil recovery. Equipped with a Microtex filter and HEPA-Flo bag as standard, they filter down to 0.3 microns at 99.97 percent efficiency. They are available with a variety of tools for carpet or hard floor care and optional electric or air turbo power heads are available for improved agitation.

NaceCare also offers the NBV 180/220 battery canister vacuums for daytime cleaning. Both units have 45-minute run time, 2.5-hour charge time and a quick change-out battery system.



NaceCare upright and canister vacuums meet the stringent certification requirements for the Carpet and Rug Institute (CRI).

DAILY MAINTENANCE

Spotting Extractors

The GVE 370, with its powerful 1.3 hp vacuum motor and two-year warranty, is ideal for spotting, upholstery cleaning and vehicle detailing. With 100-inch water lift, 95 cfm of airflow and a 30 psi pump, George provides excellent water recovery and won't over-wet fabrics. The 1.6-gallon recovery tank comes with a handy carrying handle for dumping.

The AV 4X and AVB 4X are lightweight and easy to transport. The ergonomic adjustable handle height has a twist grip solution control providing 60 psi of solution.

The 1.3 hp vacuum motor, with 100-inch water lift and 106 cfm of airflow, provides excellent water recovery and the squeegee attachment on the vacuum shoe allows for hard floor cleaning.

Additionally, the AVB 4X is fitted with a heavy-duty cylindrical 600 rpm brush for agitation and superior cleaning results.

The TP 4X has 120" of waterlift making it excellent for carpet spotting and upholstery cleaning. It has a 60 psi pump and comes with an 8' solution/vacuum hose and hand tool, an optional extraction wand and cart are also available.



GVE 370 "George"



AVB 4X



AV 4X



TP 4X

Shown with optional cart

Model	GVE 370	AVB 4X	AV 4X	TP 4X
Vacuum Motor	1,000W, 1.3 hp 2 stage	1000W, 1.3 hp 2 stage	1,000W, 1.3 hp 2 stage	1,500W, 2 hp 2 stage
Airflow	95 cfm	106 cfm	106 cfm	106 cfm
Water Lift	100"	100"	100"	120"
Pump: Pressure	30 psi	60 psi	60 psi	60 psi
Pump: Power	30W	70W	70W	70W
Capacity: Solution	1.6 gal.	4.0 gal.	4.0 gal.	4.0 gal.
Capacity: Recovery	1.6 gal.	4.0 gal.	4.0 gal.	4.0 gal.
Cleaning Width	4" / 10.5"	4" / 11"	11"	4"
Weight	19 lbs.	46 lbs.	29 lbs.	27 lbs.
Power Cord	42'	33'	33'	33'

INTERIM



DP 340



Clean right to the edge of walls



DP 420



Optional escalator kit for the DP 420

DUPLEX

Replace Bonnet Cleaning From restorative to interim with a low-moisture solution

Clean virtually any floor surface: carpet, grouted floors and ceramic, rubberized floors and even escalators are no obstacle for the Duplex. Simply fill the solution tanks and squeeze the trigger to feed cleaning solution onto the twin counter-rotating brushes. The conveyors recover the dirty water, depositing it in the central recovery tank, or you can choose to double scrub the area and pick up the water later.

The brushes work right to the edge of the machine and into difficult areas. With its unique 800,000 bristles counter-rotating at 780 rpm, the Duplex is a carpet cleaner's dream for both high-traffic restorative cleaning and situations requiring low-moisture interim maintenance. It's virtually impossible to over-wet a carpet using the Duplex, and carpets will dry easily in under 30 minutes.

It replaces bonnet cleaning as the mainstay in any interim carpet-maintenance program. Not only does it do a better job, it's faster! Brush options include two grades of black brushes for aggressive scrubbing. Grey is the standard all-purpose brush and yellow is for sensitive carpet areas.

Model	DP 340	DP 420
Cleaning Path	11"	14"
Solution Tank	1.1 gal.	1.6 gal.
Recovery Tank	0.75 gal.	1 gal.
Brush Speed	780 rpm	780 rpm
Brush Pressure (Max)	48 lbs.	57 lbs.
Brush Motor	1000W/1.3 hp	1000W/1.3 hp
Power Cord	35 ft.	35 ft.
Weight	48 lbs.	57 lbs.



Profiled Rubber and Ceramic



Carpet



Escalator

INTERIM RESTORATIVE

Walk Behind Extractors

AV 18AX

With large 18-gallon tanks and a 3/4 hp drive motor, the Avenger AV 18AX can tackle even the biggest commercial job. Other key features include rotationally molded polyethylene tanks and an easy-access removable spray bar with twist-off jets. The powerful 1.8 hp, three-stage vacuum motor provides 135-inch water lift and 95 cfm of airflow while the 130 psi pump allows for a variable flow rate up to 1.2 gpm.

With the optional patented onboard "Smart Kit," the pump can be used as an automatic pre-spray system with the chemical injected downstream (of the pump) so only water flows through it, preventing any buildup. The Smart Kit ensures no mixing of chemicals is required and the dilution is always correct. It also allows the unit to be used in "low-flow mode" for interim cleaning and faster drying times.

Its efficient forward motion allows upwards of 4,000 sq. ft. per hour to be cleaned, three times the rate of pullback self-contained units, while the lockdown vacuum shoe ensures consistent pressure and excellent soil recovery at all times.



AV 18AX



MODEL

AV 18AX

Vacuum Motor	3 stage, 1.8 hp
Airflow	95 cfm
Water Lift	135"
Brush Motor	100W / .13 Hp
Brush Speed	600 rpm
Drive Motor	0.75 hp
Cleaning Width	20"
Pump Type	diaphragm w/bypass
Weight	143 lbs.
Power Cord	50'

Capacity: Solution	18 gal.
Capacity: Recovery	18 gal.
Pump: Power	100W
Pump: Pressure	130 psi
Pump: Flow	0-1.2 gpm



AV 18SX



Walk Behind Extractors

AV 18SX

The large 18-gallon tanks and the efficiency of a forward-moving machine enable it to tackle even the biggest commercial jobs. The upper and lower tanks detach for easier transport and the easy-access removable spray bar has twist-off jets. The powerful 1.8 hp, three-stage vacuum motor provides 135 inches of water lift and 95 cfm of airflow while the 130 psi pump provides 1.2 gpm of flow. The spring-loaded vacuum shoe is adjustable, ensuring consistent pressure and pickup on different carpet thicknesses and uneven floors. For hard floors, the carpet shoe is easily substituted with an optional squeegee.

With the optional patented onboard "Smart Kit," the pump can be used as an automatic pre-spray system with the chemical injected downstream (of the pump) so only water flows through it, preventing any buildup. The Smart Kit ensures no mixing of chemicals is required and the dilution is always correct. It also allows the unit to be used in "low-flow mode" for interim cleaning and faster drying times.

Cleaning at a rate upwards of 4,000 sq. ft. per hour, nearly three times that of standard pull-back extractors, and with less operator fatigue make the AV 18SX an outstanding choice. Optional features include the Smart Kit, hard floor squeegee and HT 1800 in-line heater.

OPTIONAL HARD FLOOR SQUEEGEE FOR MODEL AV 12QX

Simply remove the carpet shoe, fit the squeegee attachment and lower the brush housing to the lowest position to enable cleaning of your hard floor surfaces.

MODEL

AV 18SX

Vacuum Motor	1400W, 1.8 hp, 3 stage
Airflow	95 cfm
Water Lift	135"
Brush Motor	100W / .13Hp
Brush Speed	600 rpm
Cleaning Width	20"
Weight	140 lbs.
Pump Type	diaphragm w/bypass

Pump: Power	100W
Pump: Pressure	130 psi
Pump: Flow	0-1.2 gpm
Capacity: Solution	18 gal.
Capacity: Recovery	18 gal.
Power Cord	50'

Quiet Walk Behind Extractors

AV 12QX

Running under 60 dB, the AV 12QX is an excellent choice for any 24-hour facility, especially in the hospitality and health-care industries. The AV 12QX is constructed of polyethylene and features a 130 psi pump providing a flow rate up to 1.2 gpm. The powerful 1.8 hp, three-stage vacuum motor provides 135-inch water lift and 95 cfm of airflow. The spring-loaded vacuum shoe is adjustable, ensuring consistent pressure and pickup on different carpet thicknesses and uneven floors. For hard floors, the carpet shoe is easily substituted with an optional squeegee.

With the optional patented onboard "Smart Kit," the pump can be used as an automatic pre-spray system with the chemical injected downstream (of the pump) so only water flows through it, preventing any buildup. The Smart Kit ensures no mixing of chemicals is required and the dilution is always correct. It also allows the unit to be used in "low-flow mode" for interim cleaning and faster drying times.

Cleaning at a rate upwards of 4,000 sq. ft. per hour, nearly three times that of standard pull-back extractors, and with less operator fatigue make the AV12 QX an outstanding choice. Optional features include the Smart Kit, hard floor squeegee and HT 1800 in-line heater.

OPTIONAL HARD FLOOR SQUEEGEE FOR MODEL AV 12QX

Simply remove the carpet shoe, fit the squeegee attachment and lower the brush housing to the lowest position to enable cleaning of your hard floor surfaces.



Shown with optional Smart Kit

AV 12QX



MODEL

AV 12QX

Vacuum Motor

1,400W, 1.8 hp, 3 stage

Airflow

95 cfm

Water Lift

135"

Brush Motor

100 W / .13 hp

Brush Speed

600 rpm

Cleaning Width

20"

Pump Type

diaphragm w/bypass

Weight

121 lbs.

Power Cord

50'

Sound Level

60 dB(A)

Pump: Power

100W

Pump: Pressure

130 psi

Pump: Flow

0-1.2 gpm

Capacity: Solution

12 gal.

Capacity: Recovery

12 gal.



AVB 9X

Pull-Back Extractor AVB 9X

With a sound level of only 60 dB, the AVB 9X can be used in even the most sensitive areas. It is constructed of rotationally molded polyethylene and features a 130 psi pump providing a flow rate of 1.2 gpm. The powerful 1.8 hp, three-stage vacuum motor provides 135-inch water lift and 95 cfm of airflow.

The AVB 9X is well balanced and easy to use; the 16-inch brush ensures it can handle the toughest of jobs. The high water lift motor provides excellent water recovery; in most cases carpets can dry in less than one hour. The float shut-off ensures water never reaches the vacuum motor and the five jet spray bar provides a consistent spray pattern with no streaking.

Brush pressure is fully adjustable for different types of carpet and the powerful brush motor ensures excellent agitation. The water flow rate is variable, allowing for low-moisture or full restoration cleaning. The AVB 9X truly is the market leader in pull-back extractors.

MODEL

Vacuum Motor	1,400W, 1.8 hp, 3 stage
Airflow	95 cfm
Water Lift	135"
Brush Motor	90W, .12 hp
Brush Speed:	600 rpm
Cleaning Width	16"
Pump Type	diaphragm w/bypass
Weight	95 lbs.
Power Cord	50'
Sound Level	60 dB(A)

AVB 9X

Pump: Power	100W
Pump: Pressure	130 psi
Pump: Flow	0-1.2 gpm
Capacity: Solution	9 gal.
Capacity: Recovery	9 gal.

RESTORATIVE

Tempest® Box Extractors

Our Tempest box extractors are lightweight and easy to transport. Constructed of rugged polyethylene, the upper and lower tanks detach into two separate units for easier transport.



TP 8X

At only 49 lbs., the TP 8X is light and easy to transport, yet has all the power of a full-size extractor. With its 130 psi pump and 20-foot vacuum and solution hoses, the TP 8X is ready to tackle even the largest of jobs.



Shown with optional Smart Kit

TP 18SX



Shown with optional Smart Kit

TP 18DX

Both the TP 18SX and TP 18DX are premium extractors featuring a 130 psi pump with 1.2 gpm of water flow. Their 18-gallon polyethylene tanks are designed to clean large areas. The SX has 95 cfm of airflow and the DX is equipped with 212 cfm. Both units come complete with a 20-foot solution/vacuum hose and a three-jet wand.

MODEL	TP 8X	TP 18SX	TP 18DX
Vacuum Motor	1,500W, 2 hp 2 stage	1,400W, 1.8 hp 3 stage	2-1,000W, 1.3 hp 2 stage
Airflow	106 cfm	95 cfm	212 cfm (max.)
Water Lift	120"	135"	100"
Pump: Type	diaphragm w/bypass	diaphragm w/bypass	diaphragm w/bypass
Pump: Pressure	130 psi	130 psi	130 psi
Pump: Flow	1.2 gpm	1.2 gpm	1.2 gpm
Pump: Power	100W	100W	100W
Capacity: Solution	8 gal.	18 gal.	18 gal.
Capacity: Recovery	8 gal.	18 gal.	18 gal.
Weight	49 lbs.	92 lbs.	95 lbs.
Power Cord	33'	33'	33'

RESTORATIVE



Shown with
optional Smart Kit

TP 18SX-HP



HT 1800 Heater

Tempest® High Pressure Box Extractors

For the professional carpet cleaner, the TP 18SX-HP features a 400 psi piston pump with 1.25 gpm of flow and large 18-gallon tanks. With the patented onboard "Smart Kit" as standard equipment, the pump can be used as an automatic pre-spray system with the chemical injected downstream (of the pump) so only water flows through it, preventing any buildup.

The TP18SX-HP's 1.8 hp, three-stage vacuum motor provides 135-inch water lift and 95 cfm of airflow, ensuring excellent soil recovery and faster drying times. The onboard storage of hoses and wand plus detachable tanks provide easy transport from job to job. It comes complete with a 20-foot solution/vacuum hose and a three-jet wand.

OPTIONAL HEATER

Available for TP 8X, TP 18SX, TP 18SX-HP, TP 18DX, AV 12QX AV 18AX and AV 18SX models, the HT 1800 in-line heater conveniently mounts to the rear part of the machine. The heating element has an operating and hi-limit thermostat for safety. Water can be heated in-line; however, higher temperatures can be achieved with the pre-heating function.

MODEL	TP 18SX-HP
Vacuum Motor	1,400W, 1.8 hp 3 stage
Airflow	95 cfm
Water Lift	135"
Pump: Type	dual piston w/bypass
Pump: Pressure	400 psi
Pump: Power	180W, 0.25 hp
Pump: Flow	1.25 gpm
Capacity: Solution	18 gal.
Capacity: Recovery	18 gal.
Weight	176 lbs.
Power Cord	33'

MODEL	HT 1800		
Power	1,800W		
Voltage	120V, 50/60Hz		
Power Cord	50'		
Dimensions:	L-4.3" / W-6.3" / H-13.3"		
Weight	14 lbs.		
Temperature	160° F (max.)		
Pre-heating	8 gal.	12 gal.	18 gal.
15° F Increase	7 min.	10 min.	15 min.
In-line heating	Hand tool	3-jet wand	
Temp	114° F	100° F	50% flow
	76° F	66° F	75% flow
	57° F	50° F	100% flow

CHEMICAL

Pre-Spray Smart Kit

The Smart Kit is an option for the TP 8, TP 18SX/DX, AV 12QX, AV 18SX/AX and is standard on the TP 18SX-HP. Heavily soiled areas such as traffic lanes, pivot areas in front of elevators and entrances require additional chemical dwell time to emulsify and loosen compacted soil. The Smart Kit uses the extractor pump to dispense an onboard chemical through a 33-foot pre-spray hose and heavy-duty spray wand. The Smart Kit applies the traffic lane cleaner consistently and uses 50 percent less labor than conventional hand pump-up sprayers or electric sprayers.

Chemicals Just For Carpet

NaceCare Solutions Just For Carpets is a multi-use carpet chemical formulated to meet the cleaning requirements for the new generation of synthetic carpet construction and delicate wool fibers. This neutral pH chemistry is especially designed for extraction, encapsulation, bonneting and traffic lane cleaning and it is safe to use on wool carpets. It has outstanding soil-removal qualities and won't leave a sticky residue that can cause rapid re-soiling. Just For Carpets meets sustainability requirements, using low VOCs, no dyes, no perfumes and safe surfactants.

- Twin Cylindrical Brush Encapsulation: Dilute 8 oz. per gallon
- Traffic Lane Cleaner: Dilute 8 oz. per gallon
- Extraction: Dilute 2 oz. per gallon

Just For Spots

Just for Spots is a water-based general spotter formulated to remove 90 percent of most spots in carpets. This ready-to-use, 32 oz. bottle is safe to use for general spot cleaning without harming carpet fibers or causing re-soiling. Simply apply onto a spot and blot with a white terry cloth towel or remove with a spotting machine or extractor.



Recognized for Safer Chemistry www.epa.gov/dfe



1205 Britannia Road East,
Mississauga, Ontario, L4W 1C7

1.800.387.3210 TOLL-FREE

1.800.709.2896 FAX

www.nacecare.com



Pre-spraying with
our Smart Kit

AV12QX w/Smart Kit



Just For Carpets



Just For Spots



Just For Grease

Just For Grease

Just For Grease is a safe, easy-to-use product for removing grease and oil-based stains from carpet. It is effective on paint, oil and grease without the dangers associated with harsh solvents and volatile organic compounds (VOCs). It is conveniently packaged in a 32 oz., ready-to-use bottle. Simply apply onto a spot and blot with a white terry cloth towel or remove with a spotting machine or extractor.

Just for Carpets and Just for Spots formulations are certified by the Carpet and Rug Institute (CRI) and meet sustainability requirements for the EPA Design for the Environment (DfE) stewardship program.

