



the andersen company

ONE SOURCE FOR MATS

ENTRANCE MATS AND TILES

INTERIOR MATS

LOGO MATS

MESSAGE MATS

ANTI-FATIGUE MATS

SLIP RESISTANT MATS

**COMMERCIAL MATTING
CATALOG**

Andersen. Uncompromisingly Good!

In the mat industry, Andersen mats are where design and function come together, where quality isn't compromised to meet a price point, and where solutions to your maintenance and décor problems come first. We promise our customers an unconditional, 100% satisfaction guarantee for as long as you own our product.

The Andersen Company is committed to reducing our environmental impact. We are continually improving our environmental performance as an integral and fundamental part of our business strategy and operating methods. We have reduced waste going to landfills by 80% and recycle most paper, metal, cardboard, plastic, carpet and rubber waste we generate. Our commitment is also evident in our development of over 50 mat styles that contain recycled raw materials including the WaterHog Eco line of mats that contain 100% post-consumer recycled PET fiber reclaimed from plastic bottles.

For over three decades The Andersen Company has been America's leader in innovative floor protection systems, industrial safety, anti-fatigue products and high performance entrance matting. So if you are looking for better ways to minimize maintenance, prolong floor surface life, reduce cleaning costs, improve safety or increase worker comfort ask for Andersen mats—your environmentally friendly choice.



TABLE OF CONTENTS

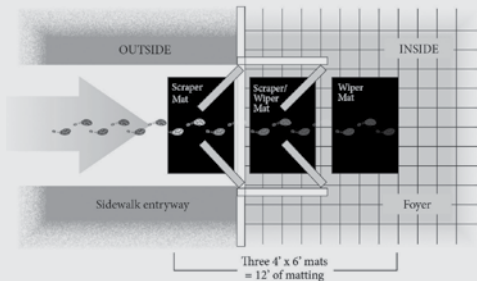
PRODUCT NAME	PRODUCT #	MAT TYPE	PLACEMENT	PAGE #
PREVENTATIVE MAINTENANCE and MAT PLACEMENT.....				2, 3
ENTRANCE MAT AND TILE COLLECTION				
WATERHOG™ ECO GRAND ELITE.....	2243, 2244.....	Scraper/Wiper.....	Indoor/Outdoor.....	6
WATERHOG™ ECO GRAND PREMIER.....	2246, 22248, 2249.....	Scraper/Wiper.....	Indoor/Outdoor.....	7
WATERHOG™ GRAND CLASSIC.....	272, 273, 274.....	Scraper/Wiper.....	Indoor/Outdoor.....	8
WATERHOG™ ECO ELITE and ECO ELITE FASHION.....	2240, 2241.....	Scraper/Wiper.....	Indoor/Outdoor.....	9
WATERHOG™ ECO PREMIER and ECO PREMIER FASHION.....	2295, 2297.....	Scraper/Wiper.....	Indoor/Outdoor.....	10
WATERHOG™ CLASSIC, FASHION and DRAINABLE.....	200, 280, 250.....	Scraper/Wiper.....	Indoor/Outdoor.....	11
WATERHOG™ CLASSIC DIAMOND and FASHION DIAMOND.....	208, 221.....	Scraper/Wiper.....	Indoor/Outdoor.....	12
WATERHOG™ ECO ELITE ROLL GOODS.....	2271.....	Scraper/Wiper.....	Indoor/Outdoor.....	13
ECO BERBER ROLL GOODS.....	2292.....	Scraper/Wiper.....	Indoor.....	14
WATERHOG™ ECO PREMIER TILE.....	2215, 2217, 2218.....	Scraper/Wiper.....	Indoor.....	15
WATERHOG™ CLASSIC TILE.....	210, 216, 219, 220.....	Scraper/Wiper.....	Indoor.....	16
SUPERSCRAPE™ PARQUET TILE.....	5557.....	Scraper.....	Indoor/Outdoor.....	16
SUPERSCRAPE™ ECO.....	554.....	Scraper.....	Indoor/Outdoor.....	17
SUPERSCRAPE™.....	555, 5555.....	Scraper.....	Indoor/Outdoor.....	17
ECO SELECT.....	20296.....	Scraper/Wiper.....	Indoor/Outdoor.....	18
WATERHOG™ DIAMONDCORD.....	296.....	Scraper/Wiper.....	Indoor.....	19
WATERHOG™ MASTERPIECE SELECT.....	265.....	Scraper/Wiper.....	Indoor.....	19
BRUSH HOG.....	395.....	Scraper.....	Outdoor.....	20
BRUSH HOG PLUS.....	385.....	Scraper.....	Outdoor.....	20
FLEX-TIP™.....	874.....	Scraper.....	Outdoor.....	21
FRONTIER.....	437.....	Scraper.....	Indoor/Outdoor.....	21
INTERIOR MAT COLLECTION				
ENVIRO PLUS™.....	2202.....	Wiper.....	Indoor.....	24
TRI-GRIP™ and TRI-GRIP™XL.....	100, 190, 2100.....	Wiper.....	Indoor.....	25
COLORSTAR™ CRUNCH and COLORSTAR™ CRUNCH XL.....	110, 2110.....	Wiper.....	Indoor.....	26
CLEAN STRIDE.....	410, 411, 412.....	Scraper/Wiper.....	Indoor.....	27
GREASE HOG™.....	883.....	Scraper/Wiper.....	Indoor.....	27
STYLIST.....	872.....	Wiper.....	Indoor.....	28
IMPRESSIONIST.....	871.....	Wiper.....	Indoor.....	28
VICTORY.....	873.....	Wiper.....	Indoor.....	29
COBBLESTONE.....	870.....	Wiper.....	Indoor.....	29
LOGO MAT, SIGN MAT & MESSAGE MAT COLLECTION				
WATERHOG™ LOGO INLAY.....	234, 235.....	Scraper/Wiper.....	Indoor/Outdoor.....	32
WATERHOG™ ECO ELITE ROLL GOODS LOGO.....	2268.....	Scraper/Wiper.....	Indoor/Outdoor.....	33
ECO BERBER ROLL GOODS LOGO.....	2293.....	Scraper/Wiper.....	Indoor.....	34
WATERHOG™ SCULPTURES.....	355, 350.....	Scraper/Wiper.....	Indoor/Outdoor.....	35
CLASSIC IMPRESSIONS HD LOGO and GRAND IMPRESSIONS HD LOGO.....	73, 64.....	Wiper.....	Indoor.....	36
CLASSIC IMPRESSIONS™.....	70.....	Wiper.....	Indoor.....	37
SUPERSCRAPE™ IMPRESSIONS LOGO.....	3559.....	Scraper.....	Indoor/Outdoor.....	38
SUPERSCRAPE™ SIGNATURE LOGO.....	3669.....	Scraper.....	Indoor/Outdoor.....	39
WATERHOG™ SIGNATURE.....	3667, 3668.....	Scraper/Wiper.....	Indoor/Outdoor.....	40
WATERHOG™ SIGN.....	206, 281.....	Scraper/Wiper.....	Indoor/Outdoor.....	41
HOG HEAVEN™ SIGN.....	511, 512, 513, 514.....	Anti-fatigue.....	Indoor.....	42
WILDLIFE.....	812.....	Wiper.....	Indoor.....	43
ORIENTAL.....	814.....	Wiper.....	Indoor.....	43
ANTI-FATIGUE & SLIP RESISTANT MAT COLLECTION				
HOG HEAVEN™.....	421, 422, 423, 424.....	Anti-fatigue.....	Indoor.....	46
HOG HEAVEN™ MODULAR TILE.....	527, 528, 529.....	Anti-fatigue.....	Indoor.....	47
HOG HEAVEN™ MODULAR TILE II.....	522, 523.....	Anti-fatigue.....	Indoor.....	48
HOG HEAVEN™ MARBLE TOP.....	448, 449.....	Anti-fatigue.....	Indoor.....	49
HOG HEAVEN™ CONFETTI.....	443, 444.....	Anti-fatigue.....	Indoor.....	50
HOG HEAVEN™ FASHION.....	441, 442.....	Anti-fatigue.....	Indoor.....	51
HOG HEAVEN™ PLUSH.....	446, 447.....	Anti-fatigue.....	Indoor.....	51
HAPPY FEET™.....	465, 466, 475, 476.....	Anti-fatigue.....	Indoor.....	52
HAPPY FEET™ LINKABLE.....	467, 468, 469, 470, 477, 478, 479, 480.....	Anti-fatigue.....	Indoor.....	52
AIRFLEX™ ALL RUBBER.....	406.....	Anti-fatigue.....	Indoor.....	53
KNEELING COMFORT™.....	433.....	Anti-fatigue.....	Indoor/Outdoor.....	53
COMFORT FLOW.....	420.....	FlowThrough/Anti-fatigue.....	Indoor.....	54
COMFORT SCRAPE.....	430.....	Anti-fatigue.....	Indoor.....	54
COMFORT FLOW GRIT and COMFORT SCRAPE GRIT.....	4200, 4300.....	Slip resistant/Anti-fatigue.....	Indoor.....	54
COMFORT MATE.....	301, 302, 303, 304.....	FlowThrough/Anti-fatigue.....	Indoor.....	55
CUSHION STATION™ without holes and CUSHION STATION™ with holes.....	370, 371.....	FlowThrough/Anti-fatigue.....	Indoor.....	56
COMPLETE COMFORT™ without holes and COMPLETE COMFORT™ with holes.....	494, 496.....	FlowThrough/Anti-fatigue.....	Indoor/Outdoor.....	57
CUSHION MAX™ with holes and CUSHION MAX™ without holes.....	413, 414.....	Anti-fatigue.....	Indoor.....	58
TRACTION TREAD.....	50.....	Slip resistant.....	Indoor.....	59
TRACTION TREAD SOFT.....	56.....	Slip resistant/Anti-fatigue.....	Indoor.....	59
SURE CUSHION™ RIBBED.....	415.....	Anti-fatigue.....	Indoor.....	60
SURE CUSHION™ TEXTURE.....	425.....	Anti-fatigue.....	Indoor.....	60
SURE CUSHION™ HEAVY DUTY.....	428.....	Anti-fatigue.....	Indoor.....	60
SURE CUSHION™ YELLOW BORDER.....	427.....	Anti-fatigue.....	Indoor.....	60
SURE TREAD™ V-GROOVE.....	505.....	Floor Protection.....	Indoor.....	60
TRACTION HOG II™ without holes and TRACTION HOG II™ with holes.....	4418, 4419.....	Slip resistant.....	Indoor.....	61
SAFETY SCRAPE™.....	545.....	Slip resistant.....	Indoor/Outdoor.....	62

Preventative Maintenance

Mats are the first defense to stop dirt and moisture from entering your building. Mats filter these contaminants from entering the facility, saving thousands of dollars a year in cleaning costs. Mats also protect interior floor surfaces from excessive damage and wear. Entrance mats are the most effective way of stopping dirt and moisture at the door and keeping building maintenance costs to a minimum.

Consider These Facts...

- 70% to 80% of dust, grime and dirt in a building is tracked in from the outside on people's feet—permanently damaging floors
- One square yard of carpet can accumulate one pound of dirt a week—twice that in inclement weather
- It is estimated that the cost to find and remove a single pound of dirt from a building can run in excess of \$600 in cleaning costs. As few as 150 people entering a facility can track in one pound of dirt in a 5 day work week costing over \$30,000 dollars annually to remove.
- By utilizing high performance entrance matting of at least 10' to 15' (as recommend by the U.S. Green Building Council and the Carpet and Rug Institute) you can capture as much as 85% to 95% of contaminants that enter the building, saving maintenance dollars and protecting building assets



Safety and Ergonomics

Mats are used throughout facilities in numerous other capacities where safety is a must and anti-fatigue comfort is essential to the health and well being of employees.

- Slip and falls are the second leading cause of all workplace injuries according to Liberty Mutual Workplace Index. As many as 25,000 people a day are victims of slip and fall accidents(NSC)
 - Compensation and medical costs associated with employee slip and fall accidents total approximately \$70 Billion annually(NSC)
 - The average cost of a slip and fall injury exceeds \$12,000(Wausau Insurance)
 - The average cost to defend a slip and fall lawsuit is \$50,000(NFSI)
 - Back injuries account for 25% of all worker compensation claims annually
 - Cumulative Standing Trauma(CST) causes Billions of dollars of loss annually due to reduced productivity, increased worker compensation, higher insurance rates and absenteeism
 - According to the American College of Occupational and Environmental Science, about 38% of workers in the United States suffer from fatigue.
- Testing shows that Ergonomic Matting can reduce worker fatigue.**

Andersen has the right mat for every job.

Scraper Entrance Mats

Your First Line of Defense

Scraper mats are designed to stop mud and larger particles of dirt from being tracked inside buildings. These mats provide aggressive scraping action and trap dirt and debris in recessed areas until the mats are cleaned. Scraper mats can be used outside or inside and should be used in conjunction with a Scraper/Wiper mat and a Wiper mat.



Scraper/Wiper Entrance Mats

The Second Step to Keeping Dirt Outside

Scraper/Wiper mats are designed to provide scraping action and wiping to further stop dirt and moisture from entering a facility. These mats are typically made of tough fabrics. They channel and retain dust in recessed grooves while absorbing moisture in the fabric face. These mats are primarily used inside but may be used outside as well.



Wiper Entrance Mats

The Third Weapon Against Dirt and Moisture

Wiper Entrance Mats are designed to stop any remaining dust and moisture left after using the Scraper mat and Scraper/Wiper mat. These mats are made with carpet facing to complement most interiors. These mats are for indoor use and when used in conjunction with a Scraper mat and Scraper/Wiper mat, they can stop as much as 85% to 95% of dirt and grime from being tracked into a building.



Logo Mats

Promote a Positive Image

Custom designed logo mats are a unique way to promote a company's image. Logos or other designs can be replicated on the face of numerous styles of mats without any setup charge. Logo mats add a professional look to any entrance, while acting as a further barrier to keep contaminants from entering a facility.



Slip Resistant and Safety Mats

Protect against Slips and Falls

Slip resistant and safety mats help provide safe working areas for employees and visitors to facilities. 85% of worker's compensation claims are attributed to employees slipping on slick floors. The utilization of slip resistant mats is an ideal solution to prevent such accidents from occurring.



Anti-Fatigue Mats

Provide Comfort and Increase Productivity

Anti-Fatigue mats are available in a wide range of sizes, weights and materials. It has been proven that the proper use of anti-fatigue mats can enhance worker productivity by over 20%. These mats are designed for use wherever workers spend time standing and will help to eliminate muscular skeletal disorders.



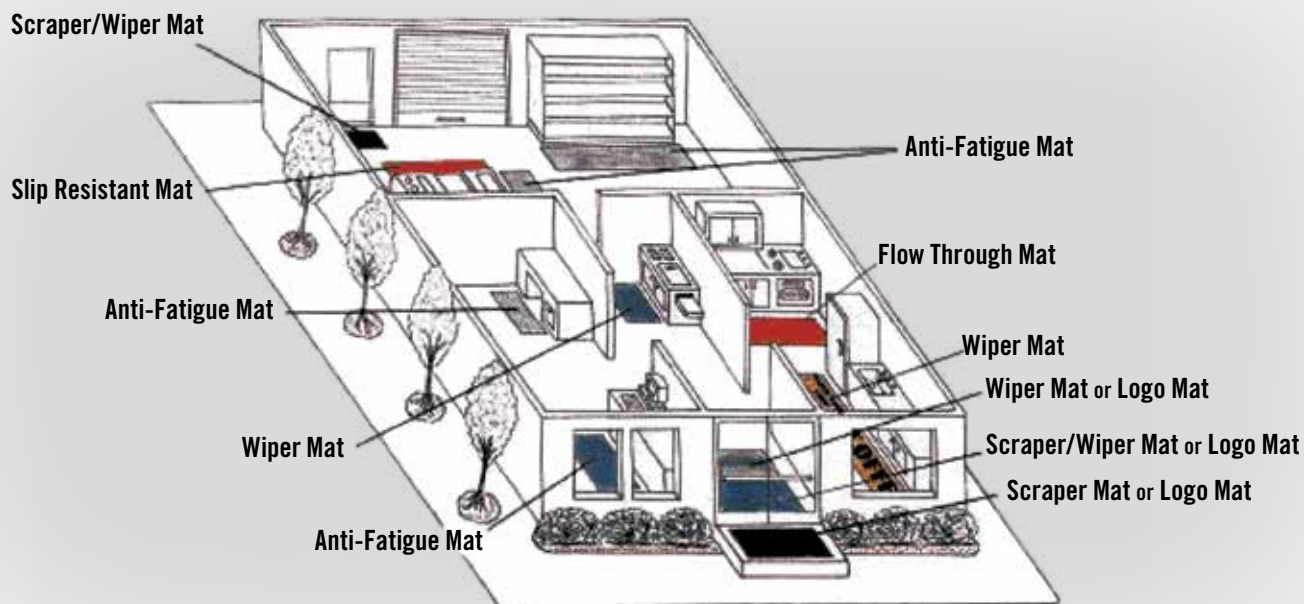
Flow Through Mats

Wet Area Solution

Flow through mats allow liquids to pass through them to eliminate slip hazards. Anti-fatigue properties provide comfort when standing for long periods of time. The thick rubber helps alleviate stress on the legs, feet and lower back.



Mat Placement Guide







ENTRANCE MAT AND TILE COLLECTION

WATERHOG™ ECO GRAND ELITE
WATERHOG™ ECO GRAND PREMIER
WATERHOG™ GRAND CLASSIC
WATERHOG™ ECO ELITE
WATERHOG™ ECO ELITE FASHION
WATERHOG™ ECO PREMIER
WATERHOG™ ECO PREMIER FASHION
WATERHOG™ CLASSIC
WATERHOG™ FASHION
WATERHOG™ DRAINABLE
WATERHOG™ CLASSIC DIAMOND
WATERHOG™ FASHION DIAMOND
WATERHOG™ ECO ELITE ROLL GOODS
ECO BERBER ROLL GOODS
WATERHOG™ ECO PREMIER TILE
WATERHOG™ CLASSIC TILE
SUPERSRAPE™
SUPERSRAPE™ ECO
SUPERSRAPE™ PARQUET TILE
ECO SELECT
WATERHOG™ DIAMONDCORD
WATERHOG™ MASTERPIECE SELECT
BRUSH HOG
BRUSH HOG PLUS
FLEX TIP™
FRONTIER



Two Ends
maroon



One End
khaki

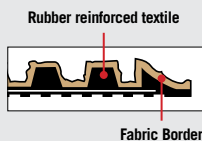


ENTRANCE/SCRAPER-WIPER/INDOOR-OUTDOOR

WATERHOG™ ECO GRAND ELITE

One End: Product No. 2243

Two Ends: Product No. 2244



khaki

- Earth friendly 30 oz/sq yd 100% post consumer recycled PET fabric reclaimed from plastic drink bottles
- SBR rubber backing contains 20% recycled rubber from car tires
- 3/8" thick bi-level surface effectively removes and stores dirt and moisture beneath shoe level between cleanings
- Rubber reinforced face nubs prevent pile from crushing, extending the performance life of the product
- Unique "Water Dam" allows the Waterhog mat to hold up to 1½ gallons of water per square yard; water and dirt stay on the mat
- Anti-Static and certified slip resistant by National Floor Safety Institute
- Available with cleated backing for placement on carpet or smooth backing for hard floor surfaces
- Recommended for commercial buildings, hotels, restaurants, healthcare facilities, office buildings and more

SIZES

ONE END	TWO ENDS
3' x 5.5'	3' x 7.1'
3' x 10'	3' x 11.7'
3' x 13.9'	3' x 15.5'
3' x 17.7'	3' x 19.4'
3' x 21.6'	3' x 23.2'
4' x 5.9'	4' x 8'
4' x 10.5'	4' x 12.6'
4' x 14.4'	4' x 16.5'
4' x 18.2'	4' x 20.3'
4' x 22'	6' x 10.1'
6' x 7'	6' x 14.8'
6' x 11.6'	6' x 18.6'
6' x 15.4'	6' x 22.4'
6' x 19.3'	
6' x 23.1'	

Sizes are approximate. Additional sizes up to 67.5' long. See price list for all additional sizes.



170 black smoke

171 indigo

172 southern pine

173 grey ash

174 maroon

175 chestnut brown

176 khaki

177 regal red



the andersen company

WATERHOG™ ECO GRAND PREMIER

Half Oval: No. 2246 One End: No. 22248 Two Ends: No. 2249

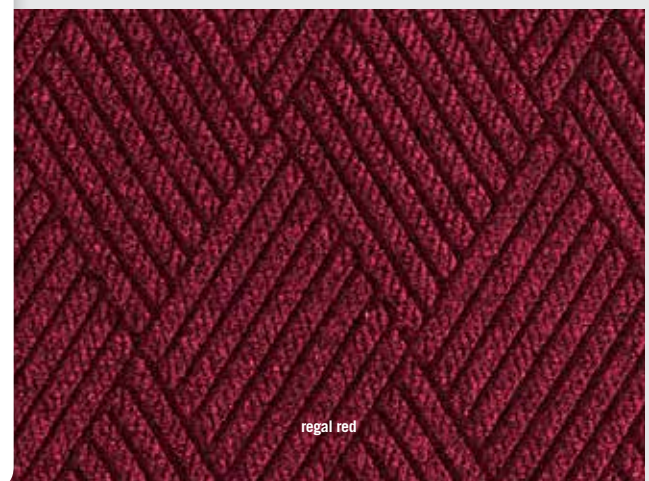
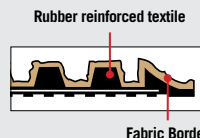
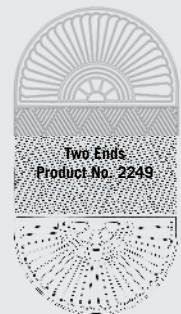
- Earth friendly 30 oz/sq yd 100% post consumer recycled PET fabric reclaimed from plastic drink bottles
- SBR rubber backing contains 20% recycled rubber from car tires
- 3/8" thick bi-level surface effectively removes and stores dirt and moisture beneath shoe level between cleanings
- Rubber reinforced face nubs prevent pile from crushing, extending the performance life of the product
- Unique "Water Dam" allows the Waterhog mat to hold up to 1½ gallons of water per square yard; water and dirt stay on the mat
- Anti-Static and certified slip resistant by National Floor Safety Institute
- Available with cleated backing for placement on carpet or smooth backing for hard floor surfaces
- Recommended for commercial buildings, hotels, restaurants, healthcare facilities, office buildings and more

SIZES

HALF OVAL	TWO ENDS
3' x 1.8'	3' x 7.1'
4' x 2.3'	3' x 11.7'
6' x 3.3'	3' x 15.5'
	3' x 19.4'
ONE END	3' x 23.2'
3' x 5.5'	4' x 8'
3' x 10'	4' x 12.6'
3' x 13.9'	4' x 16.5'
3' x 17.7'	4' x 20.3'
3' x 21.6'	6' x 10.1'
4' x 5.9'	6' x 14.8'
4' x 10.5'	6' x 18.6'
4' x 14.4'	6' x 22.4'
4' x 18.2'	
4' x 22'	
6' x 7'	
6' x 11.6'	
6' x 15.4'	
6' x 19.3'	
6' x 23.1'	

Sizes are approximate.
Additional sizes up to
67.5' long. See price list
for all additional sizes.

ENTRANCE/SCRAPER-WIPER/INDOOR-OUTDOOR



170 black smoke

171 indigo

172 southern pine

173 grey ash

174 maroon

175 chestnut brown

176 khaki

177 regal red



www.andersenco.com



Half Oval
bordeaux



Two Ends
evergreen



One End
medium grey



WATERHOG™ GRAND CLASSIC

Half Oval: No. 272

One End: No. 273

Two Ends: No. 274

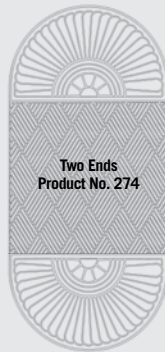
ENTRANCE/SCRAPER-WIPER/INDOOR-OUTDOOR



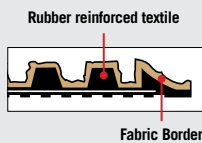
Half Oval
Product No. 272



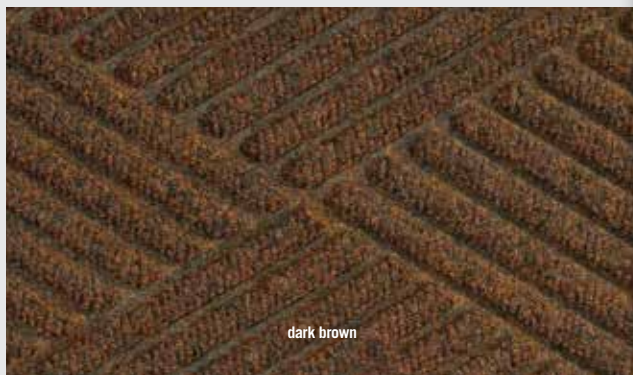
One End
Product No. 273



Two Ends
Product No. 274



Fabric Border



dark brown

- 24 oz./yd. Polypropylene fiber system dries quickly and won't fade or rot
- Green friendly rubber backing has 20% recycled rubber content
- Exclusive rubber-reinforced face pattern prevents pile from crushing, extending performance life
- 3/8" thick unique ridged construction effectively removes and holds dirt & moisture below shoe level
- Exclusive "Water Dam" border allows Waterhog to trap dirt and water
- Available with cleated backing for placement on carpet or smooth backing for hard floor surfaces
- Anti-Static and certified slip-resistant by the National Floor Safety Institute
- Recommended for commercial buildings, hotels, restaurants, healthcare facilities, office buildings and more

SIZES

HALF OVAL	TWO ENDS
3' x 1.8'	3' x 7'
4' x 2.3'	3' x 11.7'
6' x 3.3'	3' x 15.5'
ONE END	3' x 19.4'
3' x 5.5'	3' x 23.2'
3' x 10'	4' x 8'
3' x 13.9'	4' x 12.6'
3' x 17.7'	4' x 16.5'
3' x 21.6'	4' x 20.3'
4' x 5.9'	6' x 10.1'
4' x 10.5'	6' x 14.8'
4' x 14.4'	6' x 18.6'
4' x 18.2'	6' x 22.4'
4' x 22'	
6' x 7'	
6' x 11.6'	
6' x 15.4'	
6' x 19.3'	
6' x 23.1'	

Sizes are approximate.
Additional sizes up to
67.5' long. See price list
for all additional sizes.

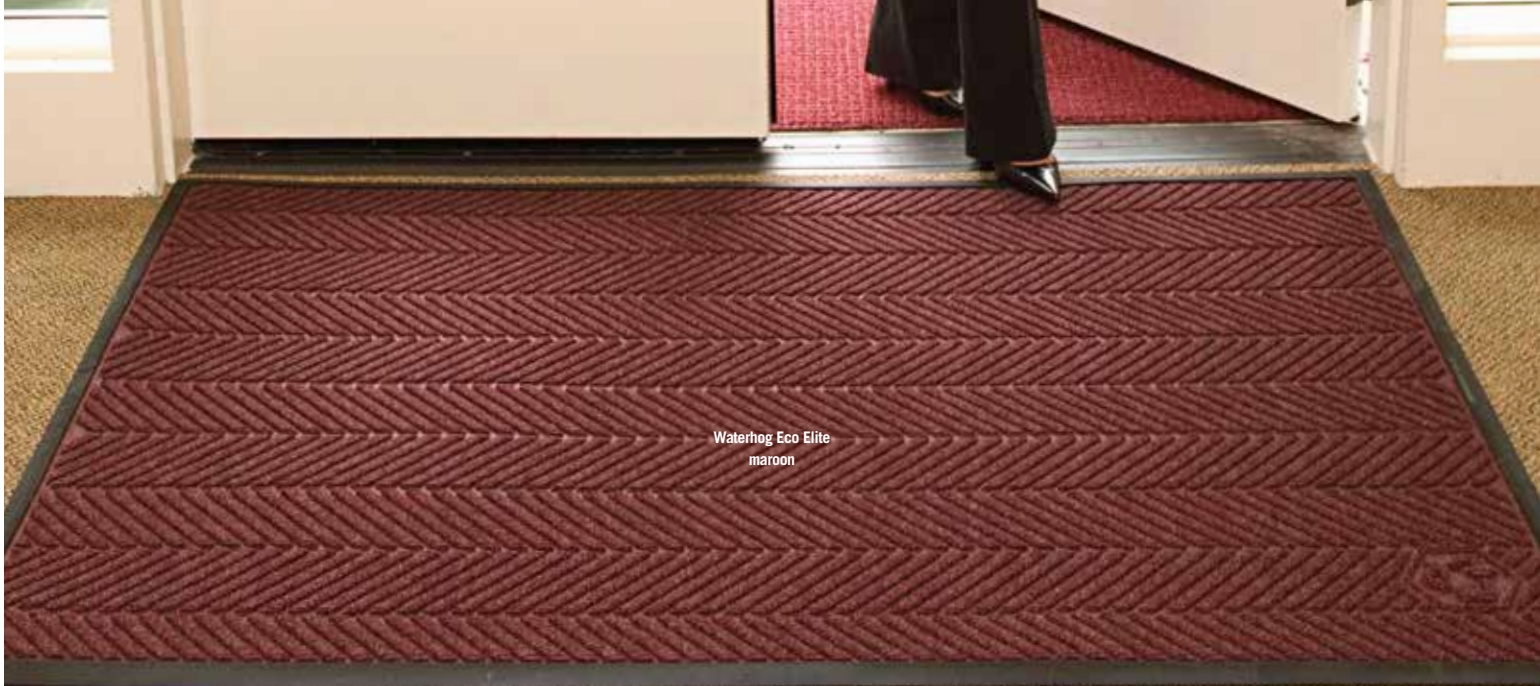


150 camel 151 medium brown 152 dark brown 153 light green* 154 charcoal 155 red/black 156 medium blue 157 medium grey 158 bluestone 159 evergreen



160 bordeaux 161 navy 162 white* 163 aquamarine* 164 gold* 165 solid red* 166 yellow* 167 orange* 168 purple*

*These colors are ONLY available in 3' and 4' widths.



Waterhog Eco Elite
maroon



WATERHOG™ ECO ELITE

Product No. 2240

WATERHOG™ ECO ELITE FASHION

Product No. 2241

- Earth friendly 30 oz/sq yd 100% post consumer recycled PET fabric reclaimed from plastic drink bottles
- SBR rubber backing contains 20% recycled rubber from car tires
- 3/8" thick bi-level surface effectively removes and stores dirt and moisture beneath shoe level between cleanings
- Rubber reinforced face nubs prevent pile from crushing, extending the performance life of the product
- Unique "Water Dam" allows the Waterhog mat to hold up to 1½ gallons of water per square yard; water and dirt stay on the mat
- Anti-Static and certified slip resistant by National Floor Safety Institute
- Available with cleated backing for placement on carpet or smooth backing for hard floor surfaces
- Recommended for commercial buildings, hotels, restaurants, healthcare facilities, office buildings and more

SIZES

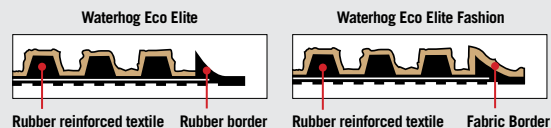
2' x 3'
3' x 4'
3' x 5'
3' x 6'
3' x 8.4'
3' x 10'
3' x 12.2'
3' x 16'
3' x 20'
4' x 6'
4' x 8.4'
4' x 10'
4' x 12.2'
4' x 16'
4' x 20'
6' x 6'
6' x 8.4'
6' x 12.2'
6' x 16'
6' x 20'

Sizes are approximate.
Additional lengths
up to 61'. See
price list for all
additional sizes.

ENTRANCE/SCRAPER-WIPER/INDOOR-OUTDOOR



Waterhog Eco Elite Fashion
southern pine



khaki



170 black smoke

171 indigo

172 southern pine

173 grey ash

174 maroon

175 chestnut brown

176 khaki

177 regal red



Waterhog Eco Premier
grey ash



WATERHOG™ ECO PREMIER

Product No. 2295

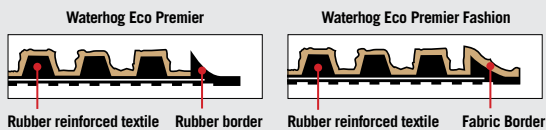
WATERHOG™ ECO PREMIER FASHION

Product No. 2297

ENTRANCE/SCRAPER-WIPER/INDOOR-OUTDOOR



Waterhog Eco Premier Fashion
southern pine



Waterhog Eco Premier

Waterhog Eco Premier Fashion

Rubber reinforced textile Rubber border Rubber reinforced textile Fabric Border



khaki

- Earth friendly 30 oz/sq yd 100% post consumer recycled PET fabric reclaimed from plastic drink bottles
- SBR rubber backing contains 20% recycled rubber from car tires
- 3/8" thick bi-level surface effectively removes and stores dirt and moisture beneath shoe level between cleanings
- Rubber reinforced face nubs prevent pile from crushing, extending the performance life of the product
- Unique "Water Dam" allows the Waterhog mat to hold up to 1½ gallons of water per square yard; water and dirt stay on the mat
- Anti-Static and certified slip resistant by National Floor Safety Institute
- Available with cleated backing for placement on carpet or smooth backing for hard floor surfaces
- Recommended for commercial buildings, hotels, restaurants, healthcare facilities, office buildings and more

SIZES

2' x 3'	4' x 10'
3' x 4'	4' x 12.2'
3' x 5'	4' x 16'
3' x 6'	4' x 20'
3' x 8.4'	6' x 6'
3' x 10'	6' x 8.4'
3' x 12.2'	6' x 12.2'
3' x 16'	6' x 16'
3' x 20'	6' x 20'
4' x 6'	
4' x 8.4'	

Sizes are approximate. Additional lengths up to 61'. See price list for all additional sizes.

170 black smoke

171 indigo

172 southern pine

173 grey ash

174 maroon

175 chestnut brown

176 khaki

177 regal red



Waterhog Fashion
evergreen

Waterhog Classic
bordeaux



WATERHOG™ CLASSIC

Product No. 200

WATERHOG™ FASHION

Product No. 280

- 24 oz/sq yd solution dyed polypropylene fabric is highly stain resistant
- SBR rubber backing contains 20% recycled rubber from car tires
- 3/8" thick bi-level surface effectively removes and stores dirt and moisture beneath shoe level between cleanings
- Rubber reinforced face nubs prevent pile from crushing, extending the performance life of the product
- Unique "Water Dam" allows the Waterhog mat to hold up to 1½ gallons of water per square yard; water and dirt stay on the mat
- Anti-Static and certified slip resistant by National Floor Safety Institute
- Available with cleated backing for placement on carpet or smooth backing for hard floor surfaces
- Recommended for commercial buildings, hotels, restaurants, healthcare facilities, office buildings and more

SIZES

18" x 27" 4' x 8'
2' x 3' 4' x 10'
3' x 4' 4' x 12'
3' x 5' 4' x 16'
3' x 8' 4' x 20'
3' x 10' 6' x 8'
3' x 12' 6' x 12'
3' x 16' 6' x 16'
3' x 20' 6' x 20'
4' x 6'

Sizes are approximate.
Additional lengths up to 60'. See price list for all additional sizes.

ENTRANCE/SCRAPER-WIPER/INDOOR-OUTDOOR

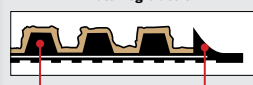
WATERHOG™ DRAINABLE

Product No. 250

Waterhog Drainable
evergreen

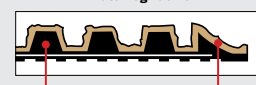
SEE PRICE BOOK FOR DETAILS

Waterhog Classic



Rubber reinforced textile Rubber border

Waterhog Fashion



Rubber reinforced textile Fabric Border

bordeaux

150 camel 151 medium brown 152 dark brown 153 light green* 154 charcoal 155 red/black 156 medium blue 157 medium grey 158 bluestone 159 evergreen

160 bordeaux 161 navy 162 white* 163 aquamarine* 164 gold* 165 solid red* 166 yellow* 167 orange* 168 purple*

*These colors are available in 3' and 4' widths only.



www.andersenco.com



Waterhog Classic Diamond
red/black



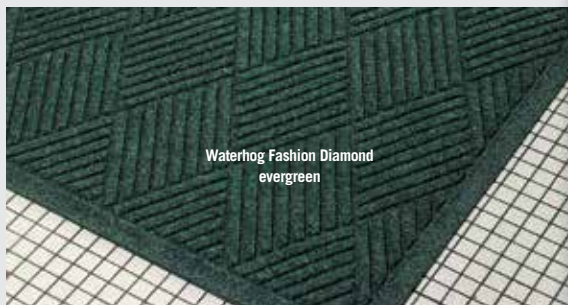
ENTRANCE/SCRAPER-WIPER/INDOOR-OUTDOOR

WATERHOG™ CLASSIC DIAMOND

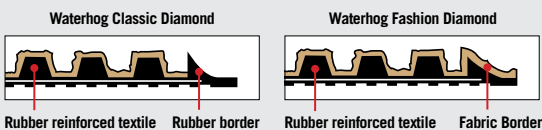
Product No. 208

WATERHOG™ FASHION DIAMOND

Product No. 221



Waterhog Fashion Diamond
evergreen



navy

- 24 oz/sq yd Polypropylene fiber system dries quickly and won't fade or rot
- Green friendly rubber backing has 20% recycled rubber content
- 3/8" thick exclusive rubber-reinforced face pattern prevents pile from crushing, extending performance life
- Unique ridged construction effectively removes and holds dirt & moisture below shoe level between cleanings
- Exclusive "Water Dam" border allows Waterhog to trap dirt and water
- Available with cleated backing for placement on carpet or smooth backing for hard floor surfaces
- Certified slip-resistant by the National Floor Safety Institute
- Recommended for commercial buildings, hotels, restaurants, healthcare facilities, office buildings and more

SIZES

2' x 3'	4' x 8.4'
3' x 4'	4' x 10'
3' x 5'	4' x 12.2'
3' x 6'	4' x 16'
3' x 8.4'	4' x 20'
3' x 10'	6' x 6'
3' x 12.2'	6' x 8.4'
3' x 16'	6' x 12.2'
3' x 20'	6' x 16'
4' x 6'	6' x 20'

Sizes are approximate. Additional lengths up to 61'. See price list for all additional sizes.



150 camel 151 medium brown 152 dark brown 153 light green* 154 charcoal 155 red/black 156 medium blue 157 medium grey 158 bluestone 159 evergreen



160 bordeaux 161 navy 162 white* 163 aquamarine* 164 gold* 165 solid red* 166 yellow* 167 orange* 168 purple*

*These colors are ONLY available in 3' and 4' widths.



Waterhog Eco Elite Roll Goods
maroon



WATERHOG™ ECO ELITE ROLL GOODS

Product No. 2271

- Environmentally friendly matting solution is made with 100% post-consumer recycled PET Polyester fiber derived from used plastic bottles
- Rubber backing contains 20% post-consumer recycled tires
- 3/8" thick permanently reinforced bi-level Waterhog construction effectively allows dirt and moisture to be filtered at the door and contained in the base of the mat, away from foot traffic
- Every square foot of a Waterhog Eco mat eliminates 4 half liter plastic bottles from the waste stream
- May be purchased pre-seamed and bordered or rolls may be purchased separately and installed on site
- Great for large entrances and custom cut applications in sizes up to 12'x 50'

ROLL SIZE
(Does not include nosing)
6' x 67'

STANDARD SIZES
(Nosing on all four sides)
8' x 10'
10' x 12'
10' x 16'
12' x 16'
12' x 20'

ENTRANCE/SCRAPER-WIPER/INDOOR-OUTDOOR



grey ash



170 black smoke

171 indigo

172 southern pine

173 grey ash

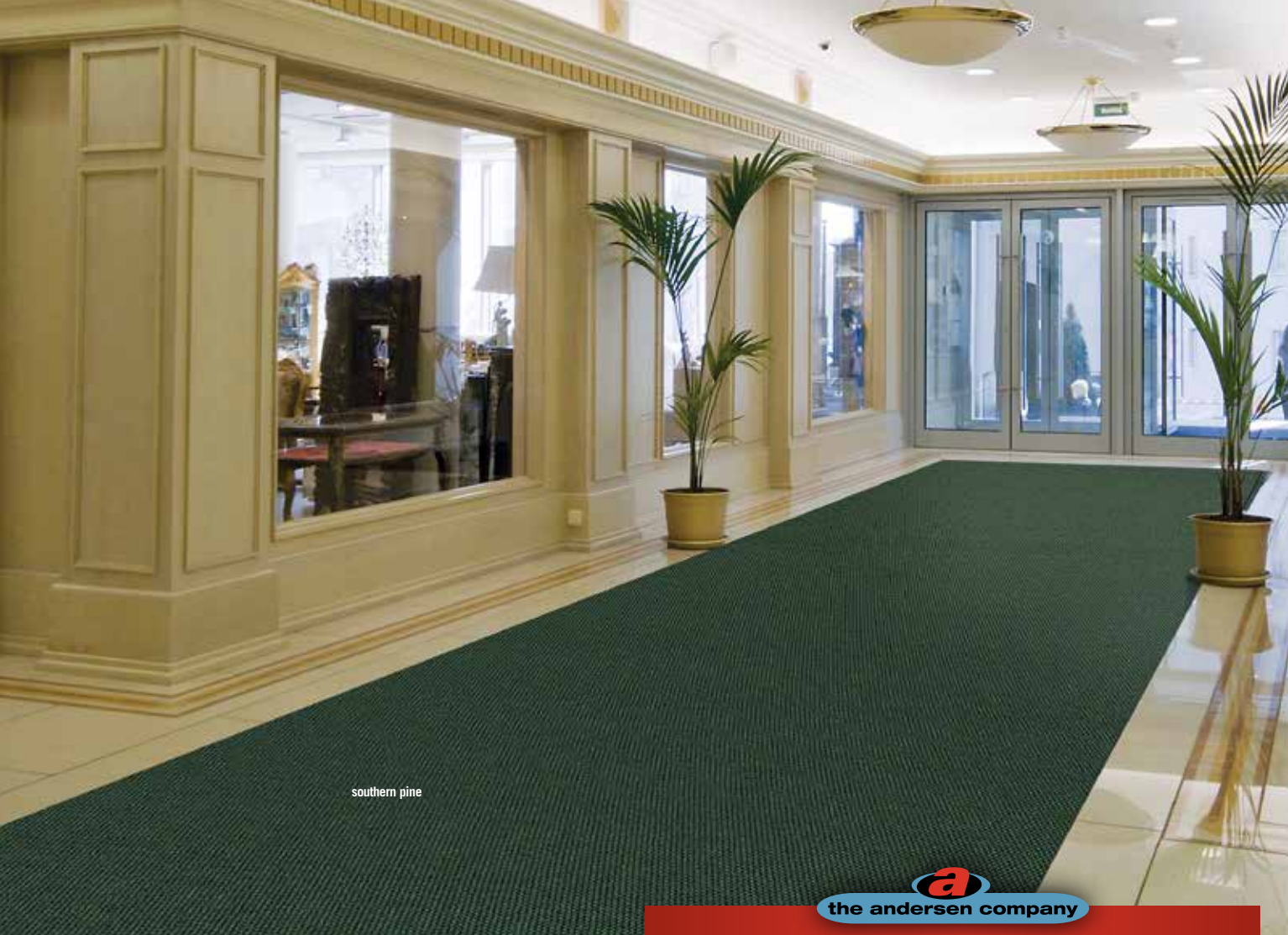
174 maroon

175 chestnut brown

176 khaki

177 regal red





southern pine



ENTRANCE/SCRAPER-WIPER/INDOOR

ECO BERBER ROLL GOODS

Product No. 2292



khaki

- Fabric is produced with 100% post-consumer PET Polyester reclaimed from plastic bottles
- 3/8" thick heavy needle punched fabric has 45 oz/sq yd face weight
- Rubber backing is made with recycled tires
- Recycled content is over 90% of product weight
- Naturally stain resistant and easy to clean
- Solution dyed for excellent light & wet fastness
- Available in 6' rolls or custom sizes up to 12'x 50'
- Eco Berber colors match Waterhog Eco Elite Roll Goods colors so both fabrics may be used in side by side installations
- Great for large entrance area installations and custom size applications

ROLL SIZE

(Does not include nosing)
6' x 50'

STANDARD SIZES

(Nosing on all four sides)
6' x 10'
8' x 10'
10' x 12'
10' x 16'
12' x 16'
12' x 20'



170 black smoke

171 indigo

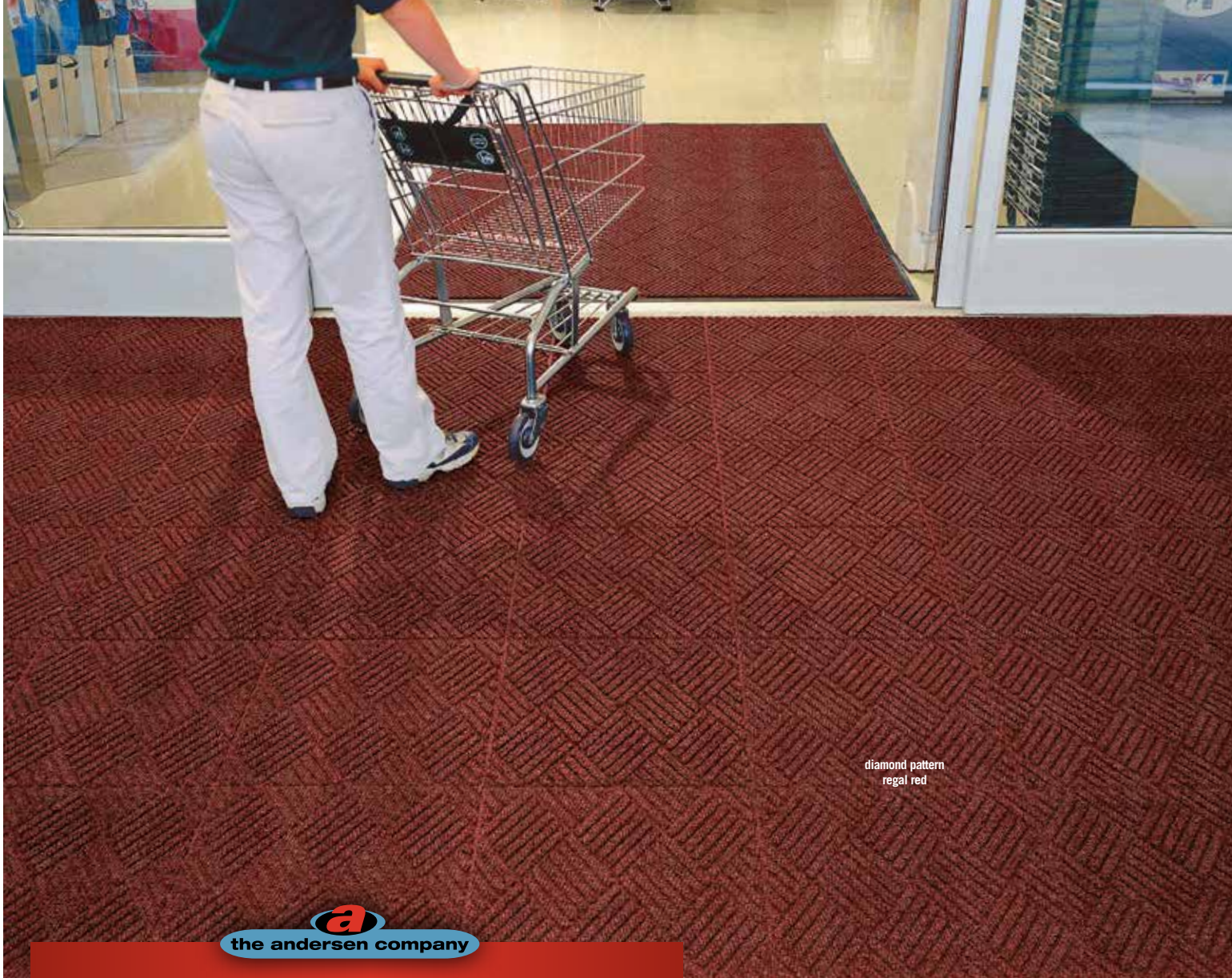
172 southern pine

173 grey ash

174 maroon

175 chestnut brown

176 khaki



diamond pattern
regal red



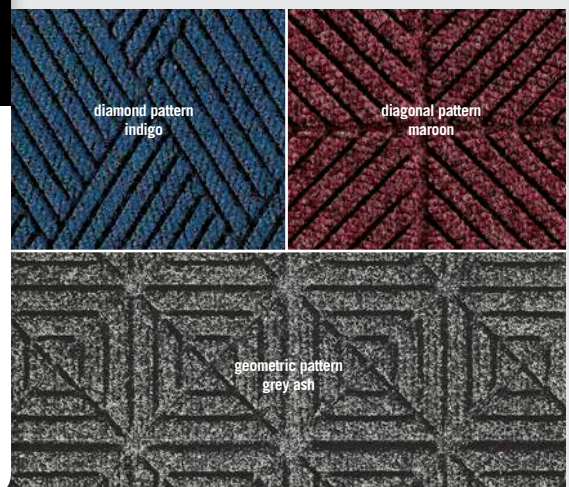
WATERHOG™ ECO PREMIER TILE

Product No. 2215 Geometric
Product No. 2217 Diagonal
Product No. 2218 Diamond

- 30 oz, 100% post-consumer recycled PET Polyester fiber derived from used plastic bottles for the face with a SBR rubber backing
- 18" x 18" tiles, 1/4" or 7/16" pile height
- Diagonal, diamond or geometric pattern. Each pattern may be special ordered with the universal recycle symbol molded into the pattern.
- Permanent rubber reinforced bi-level face will not crush. Provides years of superior dirt and moisture collection.
- Modular flexibility to handle small to large entrances

SIZE
18" x 18"

ENTRANCE/SCRAPER-WIPER/INDOOR



diamond pattern
indigo

diagonal pattern
maroon

geometric pattern
grey ash



170 black smoke

171 indigo

172 southern pine

173 grey ash

174 maroon

175 chestnut brown

176 khaki

177 regal red



WATERHOG™ CLASSIC TILE

No. 210-Square, No. 216-Diamond, No. 219-Diagonal, No. 220-Geometric

- Offers the same outstanding cleaning performance and benefits as the Waterhog™ Classic mat
- Premium 24-ounce anti-static, 100% polypropylene fiber system with SBR rubber backing
- 18" x 18" tiles, 1/4" or 7/16" pile height
- Classic square, diamond, diagonal or geometric pattern
- Designed to be installed in high-traffic areas such as entrances, recessed mat wells, lobbies, vestibules and elevators

SIZE

18" x 18"



geometric pattern
dark brown



150 camel 151 medium brown 152 dark brown 154 charcoal 155 red/black 157 medium grey 158 bluestone 159 evergreen 160 bordeaux 161 navy



162 white 163 aquamarine 164 gold 165 solid red 166 yellow 167 orange 168 purple

ENTRANCE/SCRAPER/INDOOR-OUTDOOR



SUPERSCAPE™ PARQUET TILE

Product No. 5557

- 1/4" thick molded Nitrile Rubber with 20% post consumer recycled content
- Effectively removes and stores dirt and sand beneath shoe level so it cannot enter the building
- U.V. resistant, anti-static and certified slip resistant by the National Floor Safety Institute
- Recommended for commercial buildings, grocery stores, hotels, restaurants, healthcare facilities, office buildings, and more

SIZE

18" x 18"



SUPERSCAPE™ ECO

Product No. 554

- High recycled content: 95% post consumer recycled tires. Recycled symbol is molded in the corner of the mat.
- Multi-directional molded surface pattern effectively scrapes tough dirt and grime off shoes and provides an excellent anti-slip surface
- 3/8" thickness
- Heavy weight helps keep mat in place even with cart traffic.
- Mat is equally effective when placed vertically or horizontally
- Recommended for use outside of entrances and inside applications where slip resistance is required

SIZES

2' x 3'
3' x 5'
4' x 6'

Sizes are approximate.

ENTRANCE/SCRAPER/INDOOR-OUTDOOR



**MADE
IN THE
USA**

ENTRANCE/SCRAPER/INDOOR-OUTDOOR



SUPERSCAPE™

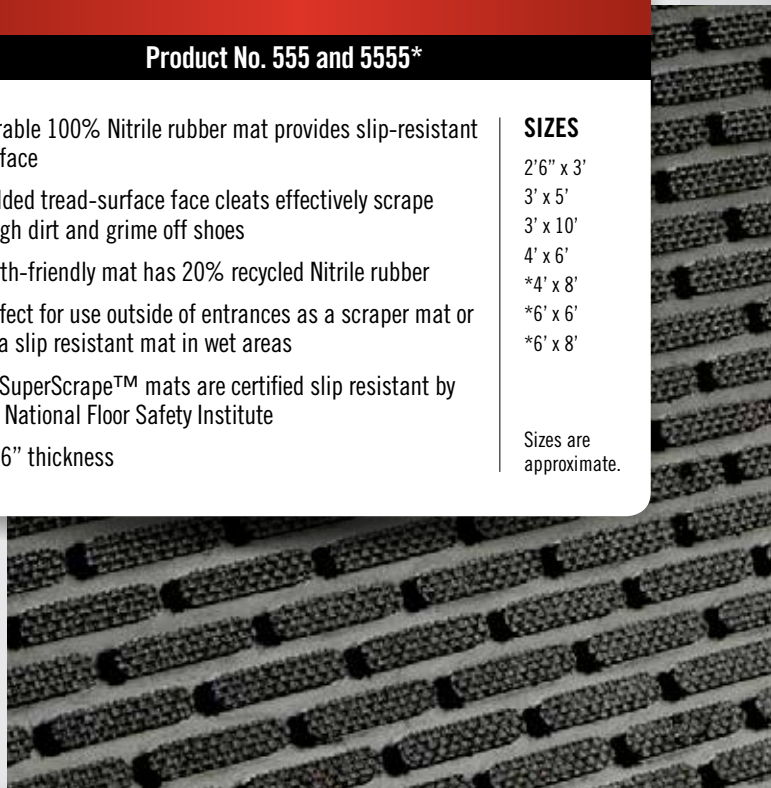
Product No. 555 and 5555*

- Durable 100% Nitrile rubber mat provides slip-resistant surface
- Molded tread-surface face cleats effectively scrape tough dirt and grime off shoes
- Earth-friendly mat has 20% recycled Nitrile rubber
- Perfect for use outside of entrances as a scraper mat or as a slip resistant mat in wet areas
- All SuperScape™ mats are certified slip resistant by the National Floor Safety Institute
- 3/16" thickness

SIZES

2'6" x 3'
3' x 5'
3' x 10'
4' x 6'
*4' x 8'
*6' x 6'
*6' x 8'

Sizes are approximate.



**MADE
IN THE
USA**



grey ash



ENTRANCE/SCRAPER-WIPER/INDOOR-OUTDOOR

ECO SELECT

Product No. 20296



chestnut brown

- Earth friendly 30 oz/sq yd 100% post consumer recycled PET fabric reclaimed from plastic drink bottles
- Backing is made of 100% crumb rubber from recycled tires
- Environmentally friendly with a total post-consumer recycled content of 96%
- 3/8" thick bi-level surface effectively removes and stores dirt and moisture beneath shoe level until cleaning
- Rubber reinforced face nubs prevent pile from crushing, extending the performance life of the product
- Recommended for commercial buildings, hotels, restaurants, healthcare facilities, office buildings and more

SIZES

2' x 3'
3' x 5'
4' x 6'

Sizes are approximate.



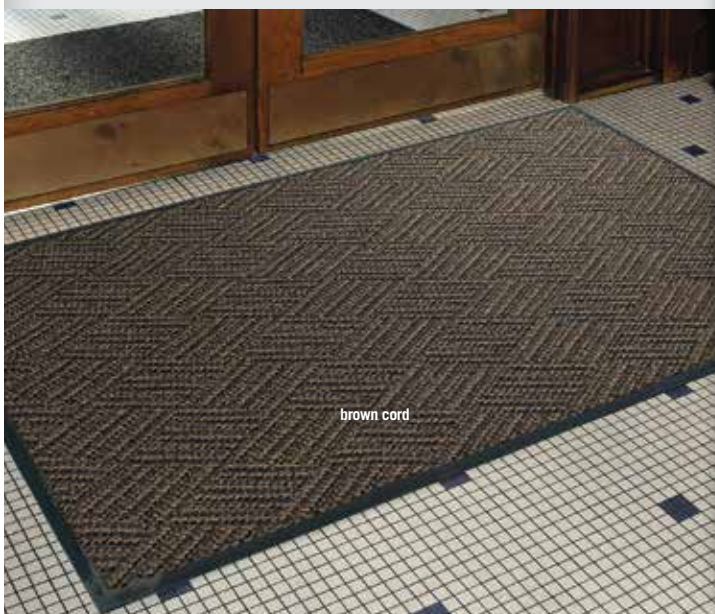
170 black smoke

173 grey ash

174 maroon

175 chestnut brown

SCRAPER-WIPER/INDOOR



the andersen company

WATERHOG™ DIAMONDCORD

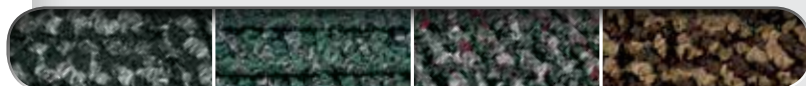
Product No. 296

- 3/8" thick, 26 oz Corduroy berber look offers the ultimate in aesthetic appeal
- Manufactured with a permanent rubber reinforced bi-level face that minimizes crushing to provide dirt and moisture collection
- Thick and fine Polypropylene fibers wipe and scrape at the same time
- Rubber backing is 20% post-consumer recycled tire content
- Rubber water dam border keeps moisture and dirt from migrating off the mat
- Cleated backing (standard) for carpeted floors or optional smooth back for hard floors
- Ideal choice for medium traffic placements

SIZES

2' x 3'
3' x 4'
3' x 5'
3' x 6'
3' x 8.4'
3' x 10'
4' x 6'
4' x 8.4'
4' x 10'
6' x 6'
6' x 8.4'

Sizes are approximate. Additional lengths up to 61'. See price list for all additional sizes.



180 charcoal cord

181 green cord

182 grey cord

183 brown cord

the andersen company

WATERHOG™ MASTERPIECE SELECT

Product No. 265

- Construction provides a rubber reinforced bi-level surface for long-term service
- 3/8" thick, 28 oz Polypropylene face and a SBR rubber backing with 20% post-consumer recycled tire content
- Rubber water dam border keeps moisture and dirt from migrating off the mat
- Cleated backing (standard) for carpet floors or optional smooth back for hard floors
- Ideal choice for medium traffic placements

SIZES

2' x 3' 4' x 6'
3' x 4' 4' x 8'
3' x 5' 4' x 10'
3' x 8' 6' x 8'
3' x 10'

Sizes are approximate. Additional lengths up to 61'. See price list for all additional sizes.



SCRAPER-WIPER/INDOOR



230 ocean wave

231 nutmeg

232 mauve



233 pewter

234 smoky teal

235 thunderstorm

100%
customer satisfaction
GUARANTEED

NFSI
HIGH-TRACTION



**MADE
IN THE
USA**

www.andersenco.com



Brush Hog Plus
burgundy brush



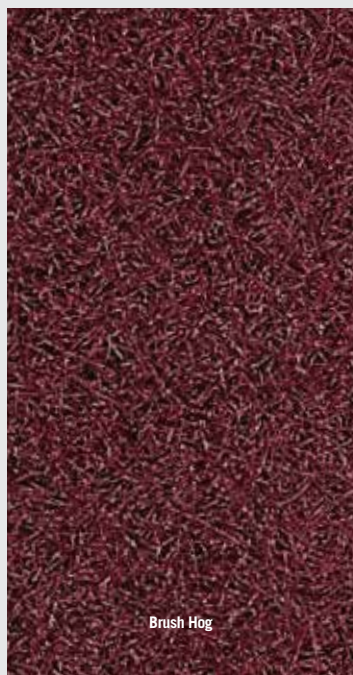
BRUSH HOG

Product No. 395

BRUSH HOG PLUS

Product No. 385

ENTRANCE/SCRAPER/OUTDOOR



Brush Hog



Brush Hog Plus
Classic square pattern w/drainable fabric borders

- 100% solution-dyed nylon face won't fade in sunlight
- Green Friendly rubber backing has 20% post consumer recycled car tire content. You may choose from Smooth or Cleated backings
- Turf pile fabric construction of both Brush Hog Plus and Brush Hog filters dirt and moisture away from the mat surface. Brush Hog Plus mats have the added feature of bi-level reinforced rubber construction for improved filtration performance
- High performance solution dyed nylon face won't fade in sunlight
- Drainable Borders
- Recommended for outside applications for all commercial buildings
- Brush Hog and Brush Hog Plus mats are certified Slip resistant by the National Floor Safety Institute

BRUSH HOG SIZES

2' x 3'	4' x 8'
3' x 4'	4' x 10'
3' x 5'	4' x 12'
3' x 6'	4' x 16'
3' x 8'	4' x 20'
3' x 10'	6' x 8'
3' x 12'	6' x 12'
3' x 16'	6' x 16'
3' x 20'	6' x 20'
4' x 6'	

Additional lengths up to 61'. See price list for all additional sizes.

BRUSH HOG PLUS SIZES

2' x 3'	4' x 6'
3' x 5'	4' x 8'
3' x 10'	5.4' x 8'

Sizes are approximate.



301 charcoal brush

302 navy brush

303 brown brush

304 burgundy brush

ENTRANCE/SCRAPER/OUTDOOR

FLEX TIP™

Product No. 874

- Two thousand finger-like tips/sq. ft (21,000/m²) aggressively scrape soil from shoes
- Excellent for outdoor use
- OSHA-compliant beveled edges and deep wells hold heavy soil and debris
- Solid, 5/8" (16mm) thick construction
- Has excellent anti-fatigue capabilities
- Easily cleaned by hosing off or shaking

SIZES

24" x 32"
32" x 39"
36" x 72"

Sizes are approximate.



FRONTIER

Product No. 437

- Unbacked vinyl loop scraper mat
- Filters dirt and water at the door
- Use in locker rooms, showers and around pools
- Order with or without edging
- 3/8" thick

SIZES

2' x 3' 4' x 8'
3' x 5' 3' x 60'
3' x 10' 4' x 60'
4' x 6'

Sizes are approximate.
Additional lengths up to 40' in 3' and 4' widths

ENTRANCE/SCRAPER/INDOOR-OUTDOOR



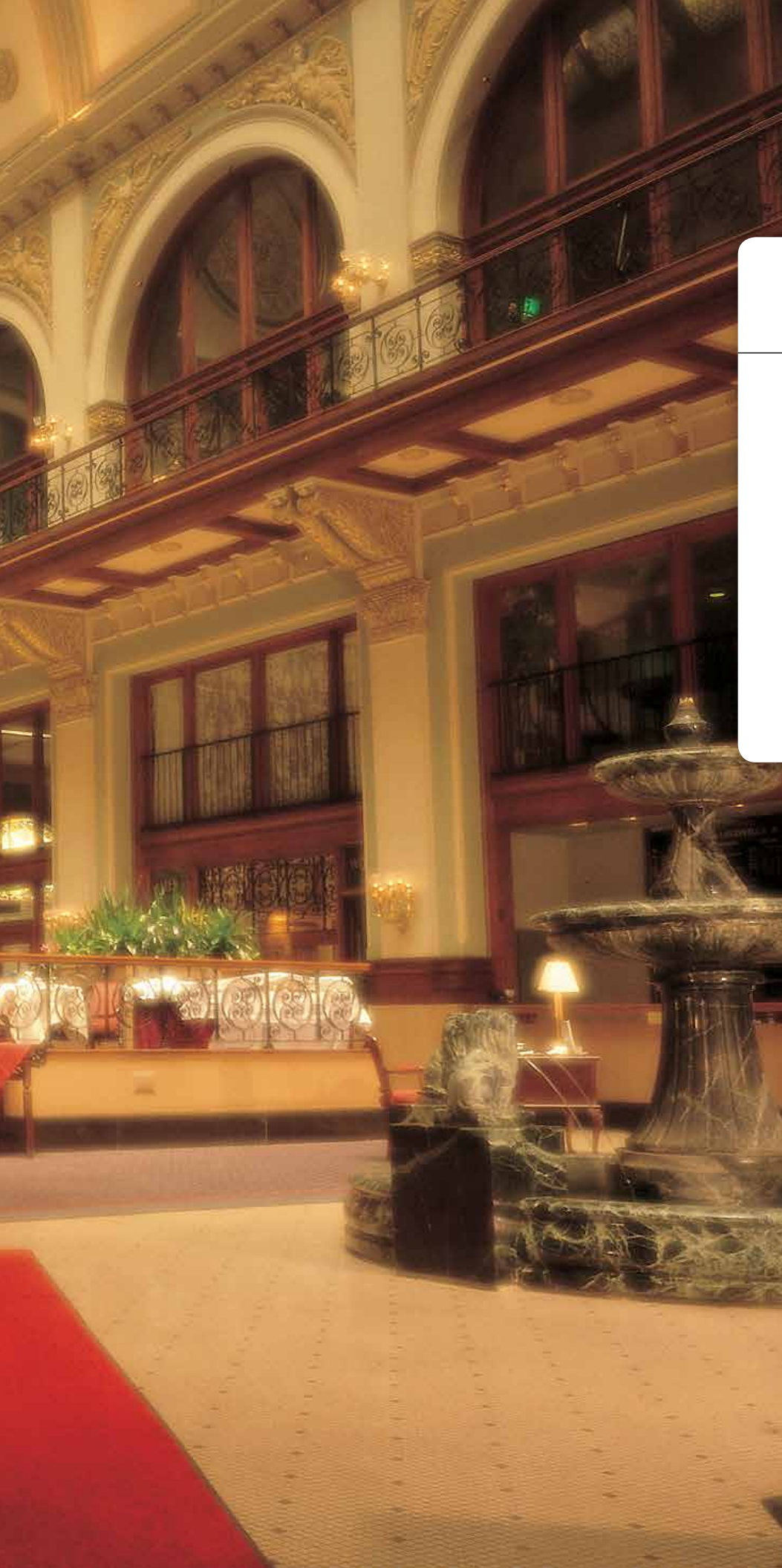
1 dark grey

2 brown

3 blue







INTERIOR MAT COLLECTION

ENVIRO PLUS™

TRI-GRIP™

TRI-GRIP XL™

COLORSTAR™ CRUNCH

COLORSTAR™ CRUNCH XL

CLEAN STRIDE

GREASE HOG™

STYLIST

IMPRESSIONIST

VICTORY

COBBLESTONE



WIPER/INDOOR



ENVIRO PLUS™

Product No. 2202

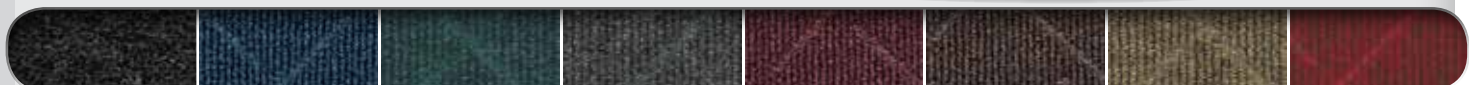


- Earth friendly 30 oz/sq yd 100% post consumer recycled PET fabric reclaimed from plastic drink bottles
- Backing is post-consumer recycled tires and EPDM (post-industrial waste rubber)
- Recycled content is 89% of total product weight (76% post-consumer, 13% post-industrial)
- Effective as a wiper mat in entryways. Also use for floor protection and spill control at water fountains, break areas, food counters, hallways, labs and more
- Anti-static. Smooth backing only.
- Recommended for commercial buildings, hotels, restaurants, healthcare facilities, office buildings and more

SIZES

2' x 3'	4' x 10'
3' x 4'	4' x 12'
3' x 5'	4' x 16'
3' x 8'	4' x 20'
3' x 10'	6' x 8'
3' x 12'	6' x 12'
3' x 16'	6' x 16'
3' x 20'	6' x 20'
4' x 6'	
4' x 8'	

Sizes are approximate. Additional lengths up to to 60'. See price list for all additional sizes.



170 black smoke

171 indigo

172 southern pine

173 grey ash

174 maroon

175 chestnut brown

176 khaki

177 regal red



TRI-GRIP™

Product No. 100

Colors 101, 102, 103, 109, 111, 113, 114, 116, 119, 121, 128, 129, 132, 141
on SBR Rubber

Product No. 190

Colors 105, 125, 126, 127, 131 on SBR Rubber

TRI-GRIP™ XL

Product No. 2100 on Nitrile Rubber

- Heavy, 100% static dissipative nylon face offers outstanding absorption and durability
- Tight, heat-set, Ultra-Twist™ yarn construction resists packing and crushing
- Earth friendly SBR rubber backing has 20% recycled content. Resists curling and cracking.
- Also available with oil and grease resistant Nitrile rubber backing
- Available with cleated backing for placement on carpet or smooth backing for hard floor surfaces. Cleated backing available in 3', 4' and 5' widths only.
- All Tri-Grip™ mats are certified slip resistant by the National Floor Safety Institute

TRI-GRIP SIZES

2' x 3'
3' x 4'
3' x 5'
3' x 6'
3' x 8'
3' x 10'
4' x 6'
4' x 8'
4' x 10'

Additional lengths up to 40'. See price list for all additional sizes.

TRI-GRIP XL SIZES

7' - 12' widths are available in lengths up to 30'. See price list for all additional sizes. Sizes are approximate.

WIPER/INDOOR



101 red/black** 102 browntone** 103 cabot grey** 105 dark granite** 109 chocolate* 111 grey 113 charcoal** 114 platinum* 116 navy* 119 emerald green*



121 solid red* 125 midnight blue* 126 autumn brown 127 burgundy berry* 128 steel blue 129 glen green 131 stardust grey 132 suede 141 cranberry*

*5' widths available

**5' and 6' widths available



www.andersenco.com



garnet crunch



COLORSTAR™ CRUNCH

Product No. 110 on SBR Rubber

COLORSTAR™ CRUNCH XL

Product No. 2110 on 100% Nitrile Rubber backing

COLORSTAR CRUNCH SIZES

2' x 3'
3' x 4'
3' x 5'
3' x 10'
4' x 6'
4' x 8'
4' x 10'

Additional lengths up to to 40'. See price list for all additional sizes.

COLORSTAR CRUNCH XL SIZES

7'- 12' widths are available in lengths up to to 30'. See price list for all additional sizes. Sizes are approximate.

- Extra coarse solution-dyed nylon fibers in combination with traditional solution-dyed fibers create excellent scraping and wiping action for maximum soil stopping power
- Earth-friendly SBR rubber backing has 20% post-consumer recycled rubber content
- 3/8" thickness
- Also available with oil and grease resistant 100% Nitrile Rubber backing
- Available with cleated backing for placement on carpet or smooth backing for hard floor surfaces*

*Cleated backing available in 3', 4' and 5' widths only

WIPER/INDOOR



garnet crunch



280 topaz crunch

281 quartz crunch

282 onyx crunch

283 garnet crunch

284 sapphire crunch

CLEAN STRIDE

Frame Only
Frame with Carpet
Inserts

Product No. 410
Product No. 411
Product No. 412

- Earth-friendly SBR rubber backing has 20% recycled rubber content. Available in smooth or cleated backing.
- 3/8" thickness. Not recommended for wet areas
- As foot traffic passes over the mat, the WaterHog™ surface scrapes larger particles while the adhesive insert captures smaller dust & dirt. With two footsteps on Clean Stride adhesive insert, over 90% of dirt particles are removed.
- Clean Stride mats provide highly effective dirt and dust removal methods for factories, computer rooms, warehouses, school gymnasiums, health care facilities and more

RUBBER FRAME SIZES
26.5" x 32"
36.5" x 46"
CARPET/ RUBBER FRAME SIZES
26.5" x 63.5"
36.5" x 92.5"
Clean Stride Mat Frames *do not* include Clean Stride Inserts
INSERT SIZES
24" x 30"
34" x 44"

SCRAPER-WIPER/INDOOR

The Clean Stride adhesive insert is comprised of 60 layers of adhesive coated film. Each layer will perform many times before it must be peeled away. Each layer is numbered to ensure one sheet at a time removal and to indicate the number of layers remaining.



red/black



100%
customer satisfaction
GUARANTEED



**MADE
IN THE
USA**

SCRAPER-WIPER/INDOOR



the andersen company

GREASE HOG™

Product No. 883

- Solution-Dyed polypropylene fabric will not fade or rot
- Grease proof Nitrile rubber backing
- Permanently molded bi-level pattern on the carpet surface provides an anti-slip surface
- 1/4" thickness: easy to clean and dry
- Low profile reinforced borders allow carts to cross easily
- Unique disk pattern on back of mat keeps it in place on hard floor surfaces. Available with cleated backing for carpeted surfaces.
- Use in transitions from kitchens to dining areas and plants to office areas to stop tracked in grease and oil

SIZES

3' x 5'
3' x 10'

Sizes are approximate.

100%
customer satisfaction
GUARANTEED



**MADE
IN THE
USA**

STYLIST

Product No. 872

- An effective barrier to keep moisture, dirt and dust from being tracked inside
- Perma Dye™ yarn resists fading
- Smooth non-skid vinyl backing
- Not launderable
- Designed to release dirt easily with daily vacuuming, or can be cleaned with any commercial carpet cleaning system

SIZES

2' x 3' 3' x 10'
3' x 4' 4' x 6'
3' x 5' 4' x 8'
3' x 6' 4' x 10'
3' x 8'

Additional lengths up to 40'. See price list for all additional sizes. Sizes are approximate.

WIPER/INDOOR



burgundy berry



101 red/black***

102 browntone***

103 cabot grey***

105 dark granite***

109 chocolate*

113 charcoal***



114 platinum*

116 navy*

119 emerald green*

121 solid red*

125 midnight blue*

126 autumn brown

127 burgundy berry*

128 steel blue

129 glen green

131 stardust grey

132 suede

*5' width colors

***5' & 6' width colors

WIPER/INDOOR

IMPRESSIONIST

Product No. 871

- Continuous filament olefin yarn is colorfast and resists stains
- 3/8" thickness
- Smooth non-skid vinyl backing
- Not launderable
- Designed to release dirt easily with daily vacuuming, or can be cleaned with any commercial carpet cleaning system

SIZES

2' x 3' 4' x 6'
3' x 4' 4' x 8'
3' x 5' 3' x 60'
3' x 6' 4' x 60'
3' x 10'

Sizes are approximate. Additional lengths up to 40'. See price list for all additional sizes. 3' and 4' in lengths up to 60'. 6' widths lengths up to 40'.



academy blue



20 academy blue

21 burgundy

22 cardinal

23 black

24 forest green

25 navy blue

26 sable

27 salt & pepper

VICTORY

Product No. 873

- Fast drying polypropylene
- Multi-directional design is absorbent and effective for scraping off soil
- Smooth non-skid vinyl backing
- Not launderable
- Designed to release dirt easily with daily vacuuming, or can be cleaned with any commercial carpet cleaning system

SIZES

2' x 3' 4' x 6'
3' x 4' 4' x 8'
3' x 5' 3' x 60'
3' x 6' 4' x 60'
3' x 10'

Sizes are approximate.
Additional lengths up to 40'. See price list for all additional sizes. 3' and 4' in lengths up to 60'. 6' widths lengths up to 40'.

WIPER/INDOOR



burgundy



30 blue

31 brown

32 burgundy

33 charcoal

34 green

WIPER/INDOOR



brick

COBBLESTONE

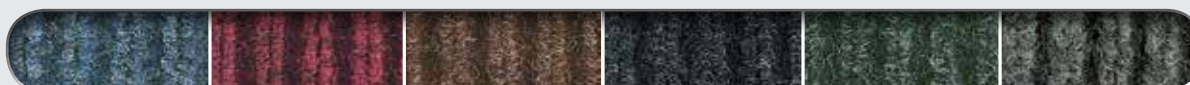
Product No. 870

- Sturdy ribbed design scrapes and traps soil within the recessed grooves
- Durable polypropylene face is effective against dust and lighter weight soil
- Smooth non-skid vinyl backing
- Not launderable
- Easily cleaned by vacuum, hose or pressure washer

SIZES

2' x 3' 4' x 6'
3' x 4' 4' x 8'
3' x 5' 3' x 60'
3' x 6' 4' x 60'
3' x 10'

Sizes are approximate.
Additional lengths up to 40'. See price list for all additional sizes. 3' and 4' in lengths up to 60'. 6' widths lengths up to 40'.



10 blue

11 brick

12 brownstone

13 charcoal

14 green

15 silver





LOGO MAT, SIGN MAT & MESSAGE MAT COLLECTION

WATERHOG™ LOGO INLAY

WATERHOG™ ECO ELITE ROLL GOODS LOGO

ECO BERBER ROLL GOODS LOGO

WATERHOG™ SCULPTURES

CLASSIC IMPRESSIONS HD LOGO

GRAND IMPRESSIONS HD LOGO

CLASSIC IMPRESSIONS LOGO

SUPERSCAPE™ IMPRESSIONS LOGO

SUPERSCAPE™ SIGNATURE LOGO

WATERHOG™ SIGNATURE

WATERHOG™ SIGN

HOG HEAVEN™ SIGN

WILDLIFE

ORIENTAL



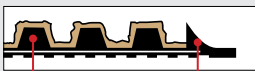
red/black
Classic Border



ENTRANCE/SCRAPER-WIPER/INDOOR-OUTDOOR



Waterhog Classic



Rubber reinforced textile Rubber border

Waterhog Fashion



Rubber reinforced textile Fabric Border

WATERHOG™ LOGO INLAY

Classic (Rubber Border)

Product No. 234

Fashion (Fabric Border)

Product No. 235

- 3/8" thick, 100% UV resistant polypropylene fabric for indoor and outdoor placements
- Molded rubber backing resists curling and cracking in all types of weather. Available in smooth and cleated backing types.
- Earth-friendly rubber backing has 20% post-consumer recycled content
- Designs are created using a unique inlay process that can include up to 19 colors per mat at no additional charge.
- Available with your choice of Classic Rubber border or Fashion Fabric border
- **No set up charge! Free proofs in 24 hrs!**
- Perfect for high traffic areas

SIZES

2' x 3'	4' x 8'
3' x 4'	4' x 10'
3' x 5'	4' x 12'
3' x 6'	4' x 16'
3' x 10'	4' x 20'
3' x 12'	6' x 8'
3' x 16'	6' x 12'
3' x 20'	6' x 16'
4' x 6'	6' x 20'

Sizes are approximate. See price list for all additional sizes.



150 camel 151 medium brown 152 dark brown 153 light green* 154 charcoal 155 red/black 156 medium blue 157 medium grey 158 bluestone 159 evergreen



160 bordeaux 161 navy 162 white* 163 aquamarine* 164 gold* 165 solid red* 166 yellow* 167 orange* 168 purple*

*These colors are ONLY available in 3' and 4' widths.



southern pine



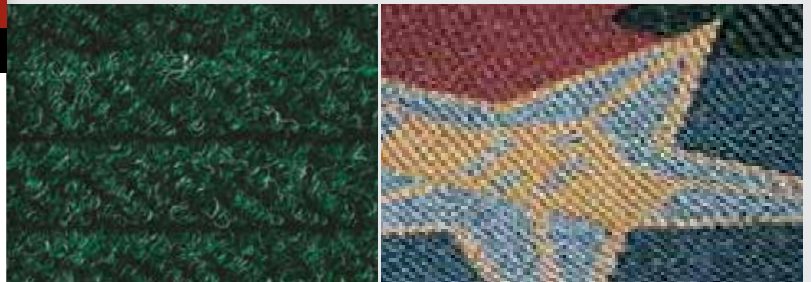
WATERHOG™ ECO ELITE ROLL GOODS LOGO

Product No. 2268

- No set up charge! Free proofs in 24 hrs!
- 16 logo colors and 8 background colors to choose from
- Designed to be installed like carpeting or loose laid like mats
- Custom sizes over 6' wide are seamed together
- Custom sizes available with or without edging up to 12' x 50'

Call for information and quote
TOLL FREE 800.241.4696 • 706.277.2551

ENTRANCE/SCRAPER-WIPER/INDOOR-OUTDOOR



BACKGROUND COLORS



LOGO COLORS



MADE
IN THE
USA



ENTRANCE/SCRAPER-WIPER/INDOOR



ECO BERBER ROLL GOODS LOGO

Product No. 2293



background area (southern pine)



logo area

- Heavy needle punched fabric has 45 oz/sq yd face weight; 3/8" thickness
- Fabric is produced with 100% Post-consumer PET Polyester reclaimed from plastic bottles
- The backing is made up of SBR (post-consumer recycled tires and EPDM (post-industrial waste rubber)
- Naturally stain resistant and easy to clean
- Solution dyed for excellent light & wet fastness
- Available in 6' rolls or custom sizes up to 12'x 50'
- Eco Berber colors match Waterhog Eco Elite Roll Goods colors so both fabrics can be used in side by side installations
- 16 logo colors and 7 background colors to choose from
- Logo colors are 100% polypropylene fiber system that will not fade or rot
- No setup charges
- Great for large entrance area installations and custom size applications

Call for
information
and quote
TOLL FREE
800.241.4696
or
706.277.2551

BACKGROUND COLORS



170 black smoke

171 indigo

172 southern pine

173 grey ash

174 maroon

175 chestnut brown

176 khaki

LOGO COLORS



gold

brown

bright red

bright green

orange

blue

purple

yellow

white



black smoke

indigo

southern pine

grey ash

maroon

chestnut brown

khaki



MADE
IN THE
USA



fashion border
solid red



WATERHOG SCULPTURES

Classic Border
Fashion Border

Product No. 355
Product No. 350

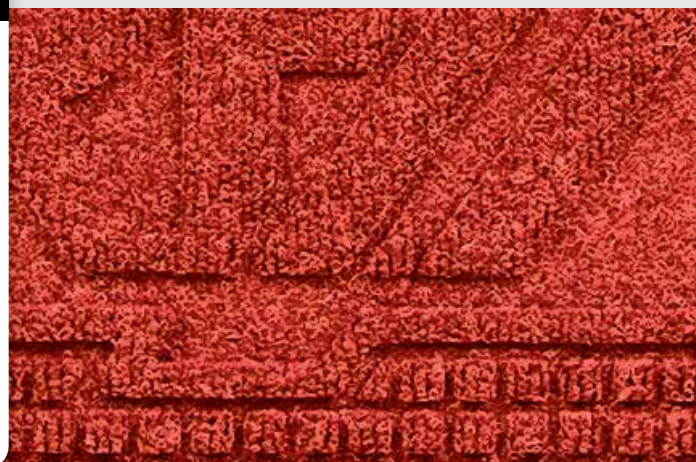
- 3/8" thick, 100% polypropylene fabric
- Earth-friendly rubber backing has 20% post-consumer recycled content. Resists curling and cracking.
- Solution dyed for excellent colorfastness
- Logo is permanently molded into the material and will not crush
- Affordable logo option when larger quantities of mats are required
- Perfect for home builders, real estate companies, apartment communities and large corporate accounts

SIZES

2' x 3' 3' x 10'
3' x 4' 4' x 6'
3' x 5' 4' x 8'

Sizes are approximate.
Minimum Order Quantity on 1st Order: 100 units.
Order Quantity on 2nd Order of a Design: 1 unit

ENTRANCE/SCRAPER-WIPER/INDOOR-OUTDOOR



*These colors are ONLY available in 3' and 4' widths.



MADE
IN THE
USA

www.andersenco.com



WIPER/INDOOR

the andersen company

CLASSIC IMPRESSIONS HD LOGO

SBR rubber border and backing
Vinyl border and backing

Product No. 73
Product No. 73

GRAND IMPRESSIONS HD LOGO

Serged border, recycled crumb rubber backing Product No. 64



- Heavy 32 oz/sq yd high twist, heat-set nylon face fabric
- SBR rubber backing contains 20% recycled rubber from car tires
- Logos are printed onto carpet face; fine details, shading and 3-D images are achievable utilizing a state-of-the-art digital printer
- 4-color process- Unlimited color options and photographic quality designs
- No set up charges, art proofs in 24 hours and fast ship times (3-5 business days)
- Available with cleated backing for placement on carpet or smooth backing for hard floor surfaces
- Certified slip resistant by National Floor Safety Institute
- Recommended for commercial buildings, hotels, restaurants, healthcare facilities, office buildings and more

SIZES

2' x 3'
3' x 4'
3' x 5'
3' x 10'
4' x 6'
4' x 8'
5' x 8'
5' x 10'
6' x 10'
6' x 12'

Sizes are approximate. See price list for all additional sizes.





CLASSIC IMPRESSIONS

SBR or Vinyl backing

Product No. 70

- 3/8" thick, long-wearing, static-dissipative nylon carpet
- Earth-friendly rubber backing contains 20% post-consumer recycled content resists curling and cracking
- Available with cleated backing for placement on carpet or smooth backing for hard floor surfaces
- No set up charge! Fast Service!
- Recommended for commercial buildings, hotels, restaurants, health care facilities, office buildings and more
- Search over a million designs in our logo database at www.andersenco.com

SIZES

2' x 3'
3' x 4'
3' x 5'
3' x 10'
4' x 6'
4' x 8'
5' x 8'
5' x 10'
6' x 10'
6' x 12'

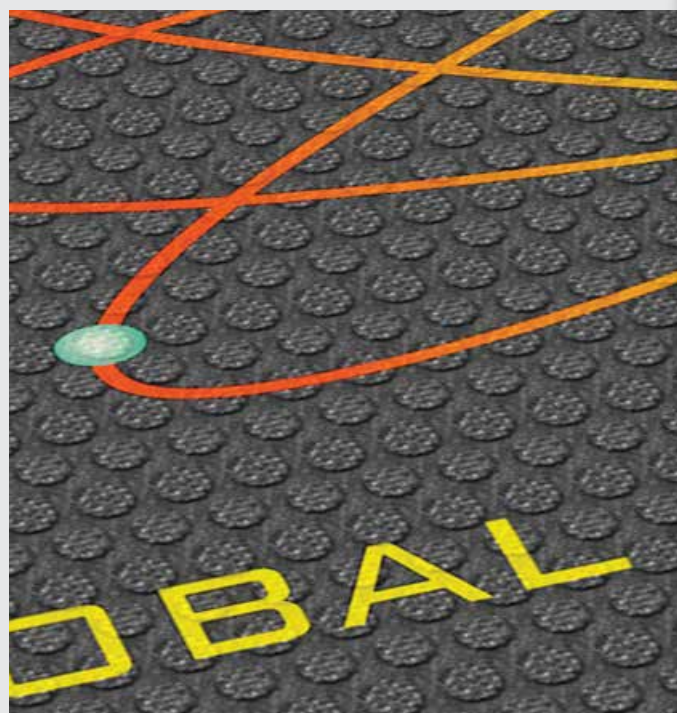
Sizes are approximate. See price list for all additional sizes.

WIPER/INDOOR





ENTRANCE/SCRAPER/INDOOR-OUTDOOR



SUPERSCAPE™ IMPRESSIONS LOGO

Product No. 3559

- Superscape™ Impressions Logo Mats offer a superior printing surface for your company logo or promotional message
- Multi-color images are created by molding a digitally printed polymeric material into durable nitrile rubber
- These long-lasting logo mats perform beautifully in all types of environments
- The high-traction surface effectively removes and traps tough dirt, grime and water from shoes
- Unlimited color options available. Photo-realistic images, print ready artwork, tones and shades are all produced with unparalleled detail and clarity. You may also select from our standard palette featuring 25 vibrant colors.
- Superscape™ Impressions are perfect for any application where colorful logo mats or message mats are needed
- 3/16" thickness. Resistant to oils and chemicals

SIZES

2.5' x 3'
3' x 5'
3' x 10'
4' x 6'
4' x 8'
6' x 6'
6' x 8'

Sizes are approximate.



the andersen company

SUPERSCAPE™ SIGNATURE LOGO

Product No. 3669

- Attractive multi color images are produced by molding a digitally printed polymeric material into durable nitrile rubber mat
- Unlimited color options with photo realistic images produce unparalleled detail and clarity
- Performs well in all types of environments
- Superscape™ Signature are perfect for any application where colorful logo mats or message mats are needed
- Superscape™ Signature mats come in 3' x 5' and 4' x 6' sizes in either horizontal or vertical orientations

SIZES

3' x 5'
4' x 6'

Logo is placed in the lower right corner of mat in either a horizontal or vertical direction.

Sizes are approximate.

ENTRANCE/SCRAPER/INDOOR-OUTDOOR



100%
customer satisfaction
GUARANTEED

NFSI
HIGH-TRACTION



**MADE
IN THE
USA**

www.andersenco.com



a
the andersen company

WATERHOG™ SIGNATURE

Waterhog Signature Classic
Waterhog Signature Fashion

Product No. 3668
Product No. 3667

ENTRANCE/SCRAPER-WIPER/INDOOR-OUTDOOR



- Perfect for high traffic areas where a company logo mat with scraper/wiper capability is needed
- 3/8" thick, 100% UV resistant polypropylene fabric for indoor and outdoor placements
- Molded rubber backing resists curling and cracking in all types of weather. Available in smooth and cleated backing types.
- Earth-friendly rubber backing has 20% post-consumer recycled content
- Logo area is molded into the rubber

SIZES

3' x 5' 4' x 6'
Sizes are approximate. Logo is placed in the lower right corner of mat in either a horizontal or vertical direction.

Logo area size: 7.5" x 13"



Waterhog Signature Fashion border



Waterhog Signature Classic border



150 camel 151 medium brown 152 dark brown 153 light green 154 charcoal 155 red/black 156 medium blue 157 medium grey 158 bluestone 159 evergreen 160 bordeaux 161 navy



WATERHOG™ SIGN

Waterhog Classic Sign
Waterhog Fashion Sign

Product No. 206
Product No. 281

- Perfect for high traffic areas where a message mat with scraper/wiper capability is needed
- 3/8" thick, 100% UV resistant polypropylene fabric for indoor and outdoor placements
- Molded rubber backing resists curling and cracking in all types of weather. Available in smooth and cleated backing types.
- Earth-friendly rubber backing has 20% post-consumer recycled content
- Sign is molded into the rubber

SIZES

3' x 5' 4' x 6'

Sizes are approximate. Sign Message is placed in the lower right corner of mat in either a horizontal or vertical direction.

Message size:
7.5" x 13"



Waterhog Fashion Sign border



Waterhog Classic Sign border



Waterhog Fashion Sign



150 camel 151 medium brown 152 dark brown 153 light green 154 charcoal 155 red/black 156 medium blue 157 medium grey 158 bluestone 159 evergreen 160 bordeaux 161 navy



MADE
IN THE
USA

www.andersenco.com

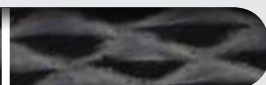


caution yellow border

ANTI-FATIGUE/DRY OR WET ENVIRONMENTS/INDOOR



caution yellow border



black border

a
the andersen company

HOG HEAVEN™ SIGN

Black Border 5/8"
Yellow Border 5/8"
Black Border 7/8"
Yellow Border 7/8"

Product No. 511
Product No. 513
Product No. 512
Product No. 514

- Anti-fatigue mats that convey safety messages
- Nitrile rubber top surface has 20% recycled content
- Closed cell Nitrile blended cushion is permanently molded (not glued) to the Nitrile rubber top surface
- Chemical Resistant, Grease & Oil Proof
- Static Dissipative and certified slip resistant by National Floor Safety Institute
- 5/8" and 7/8" thickness
- Borders are beveled and are available in black or OSHA approved yellow

SIZES

3' x 5' 4' x 6'

Sign Message is placed in the center of mat in either a horizontal or vertical direction.

Message Size: 7" x 14"

WIPER/INDOOR



Deer
Artist: Rosemary Millette
4' x 6'
Horizontal
Rubber Border



a
the andersen company

WILDLIFE

on SBR (with rubber border) or on recycled crumb rubber
(with serged border) Product No. 812

- Heavy 32 oz/sq yd high twist, heat-set nylon face fabric
- SBR rubber backing contains 20% recycled rubber from car tires
- Features artwork from five renowned Wild Wings® artists
- Wiper mat captures moisture and fine dirt particles while helping to reduce slip-and-fall accidents
- Available with smooth recycled crumb rubber backing and serged borders, or SBR backing and rubber borders
- Mats will compliment any business and are ideal for high traffic, indoor applications such as sporting good stores, hardware stores, restaurants, bars and lodges

SIZES

3' x 5'
4' x 6'

Visit our website or mobile app to view other horizontal and vertical designs available. Sizes are approximate.

a
the andersen company

ORIENTAL

on SBR (with rubber border) or on recycled crumb rubber
(with serged border) Product No. 814

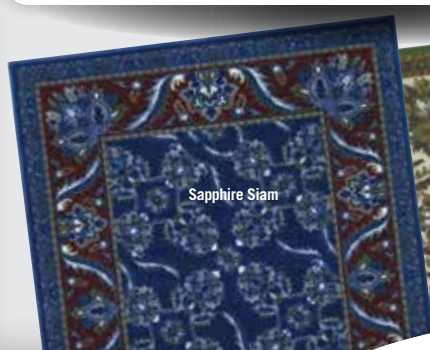
- Heavy 32 oz/sq yd high twist, heat-set nylon face fabric
- SBR rubber backing contains 20% recycled rubber from car tires
- Design is printed onto carpet face utilizing a state-of-the-art digital printer
- Wiper mat captures moisture and fine dirt particles while helping to reduce slip-and-fall accidents
- Available with smooth recycled crumb rubber backing with serged border, or SBR backing and rubber borders
- Mats will compliment any business and are ideal for high traffic, indoor applications
- Available in four colorations

SIZES

2' x 3'
3' x 5'
3' x 10'
4' x 6'
6' x 8'

Sizes are approximate.

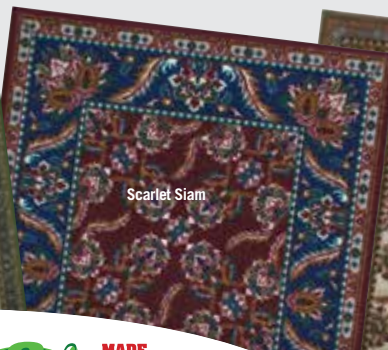
WIPER/INDOOR



Sapphire Siam



Jade Siam



Scarlet Siam



Champagne Siam

100%
customer satisfaction
GUARANTEED

NFSI
HIGH-TRACTION



MADE
IN THE
USA





ANTI-FATIGUE MAT & SLIP RESISTANT MAT COLLECTION

HOG HEAVEN™

HOG HEAVEN™ MODULAR TILE

HOG HEAVEN™ MODULAR TILE II

HOG HEAVEN™ MARBLE TOP

HOG HEAVEN™ CONFETTI

HOG HEAVEN™ FASHION

HOG HEAVEN™ PLUSH

HAPPY FEET™

AIRFLEX™ ALL RUBBER

KNEELING COMFORT™

COMFORT FLOW™

COMFORT SCRAPE™

COMFORT FLOW™ GRIT

COMFORT SCRAPE™ GRIT

COMFORT MATE

CUSHION STATION™

COMPLETE COMFORT™

CUSHION MAX™

TRACTION TREAD

TRACTION TREAD SOFT

SURE CUSHION™ RIBBED

SURE CUSHION™ TEXTURE

SURE CUSHION™ HEAVY DUTY

SURE CUSHION™ YELLOW BORDER

SURE CUSHION™ V-GROOVE

TRACTION HOG II™

SAFETY SCRAPE™

caution yellow



HOG HEAVEN™

5/8" Black Border
5/8" Striped Border
7/8" Black Border
7/8" Striped Border

Product No. 421
Product No. 423
Product No. 422
Product No. 424

ANTI-FATIGUE/DRY OR WET ENVIRONMENTS/INDOOR



100% solid Nitrile rubber
closed cell Nitrile cushion



- Nitrile rubber top surface has 20% recycled content
- Closed cell Nitrile rubber cushion is permanently molded (not glued) to the Nitrile rubber top surface
- Rubber borders will not crack or curl
- Chemical Resistant, Grease & Oil Proof
- Static Dissipative and certified slip resistant by the National Floor Safety Institute
- Welding Safe
- 5/8" or 7/8" thicknesses
- Borders are beveled and are available with OSHA approved colors: yellow, orange, green or red
- Recommended for distribution, manufacturing and retail facilities for picking lines, assembly lines, work stations, check-out stations and more

SIZES

2' x 3'
3' x 5'
3' x 12'
4' x 6'
4.8' x 8'
Additional lengths up to 60'.
See price list for all additional sizes.

Sizes are approximate.



01 danger red

02 caution yellow

03 warning orange

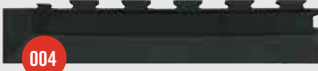
04 safety green

black

Tile



Corner Borders



Side Borders



HOG HEAVEN™ MODULAR TILE

Tile
Black Borders
Yellow Borders

Product No. 527
Product No. 528
Product No. 529

- Outstanding anti-fatigue qualities for dry areas
- Solid 20% recycled Nitrile rubber top surface has excellent chemical and oil resistance
- Closed cell Nitrile rubber cushion provides long lasting comfort
- Welding safe
- Nitrile Rubber surface is molded to the cushion backing (not glued) so the surface will not delaminate
- Rubber surface remains flexible for the life of the product and will not curl or crack
- Linkable beveled border system is available in Black or Yellow
- Static dissipative and certified slip resistant by the National Floor Safety Institute
- Recommended for distribution, manufacturing and retail facilities for picking lines, assembly lines, work stations, check-out stations and more

TILE SIZES

18" x 18"
36" x 36"

Patent Pending

CUSTOM INSTALLATIONS:

For any configuration other than square or rectangular, please call 1-800-241-4696 for proof and quote.

ANTI-FATIGUE/DRY ENVIRONMENTS





ANTI-FATIGUE/DRY ENVIRONMENTS

Corner



Middle



Side



HOG HEAVEN™ MODULAR TILE II

**18" x 18"
36" x 36"**

**Product No. 522
Product No. 523**

- Perfect for large square or rectangular installations
- Side and corner tiles include beveled borders
- Outstanding anti-fatigue qualities for dry areas
- Closed cell Nitrile rubber cushion provides long lasting comfort
- Solid 20% recycled Nitrile rubber top surface has excellent chemical and oil resistance
- Welding safe
- Nitrile Rubber surface is molded to the cushion backing (not glued) so the surface will not delaminate
- Rubber surface remains flexible for the life of the product and will not curl or crack
- Static dissipative and certified slip resistant by the National Floor Safety Institute
- Recommended for distribution, manufacturing and retail facilities for picking lines, assembly lines, work stations, check-out stations and more

TILE SIZES

18" x 18"

Middle-01
18" x 18" x 3/4"
Side Black-02
18" x 21.875" x 3/4"
Corner Black-03
21.875" x 21.875" x 3/4"
Side Yellow-04
18" x 21.875" x 3/4"
Corner Yellow-05
21.875" x 21.875" x 3/4"

36" x 36"

Middle-01
36" x 36" x 3/4"
Side Black-02
36" x 39.875" x 3/4"
Corner Black-03
39.875" x 39.875" x 3/4"
Side Yellow-04
36" x 39.875" x 3/4"
Corner Yellow-05
39.875" x 39.875" x 3/4"

Patent Pending

Color: Black with Black border or Yellow border

NOTE: Hog Heaven Modular Tile II is designed for square or rectangle installations only.





vintage pecan



HOG HEAVEN™ MARBLE TOP

5/8" thickness
7/8" thickness

Product No. 448
Product No. 449

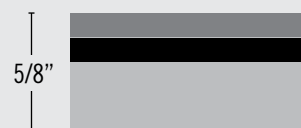
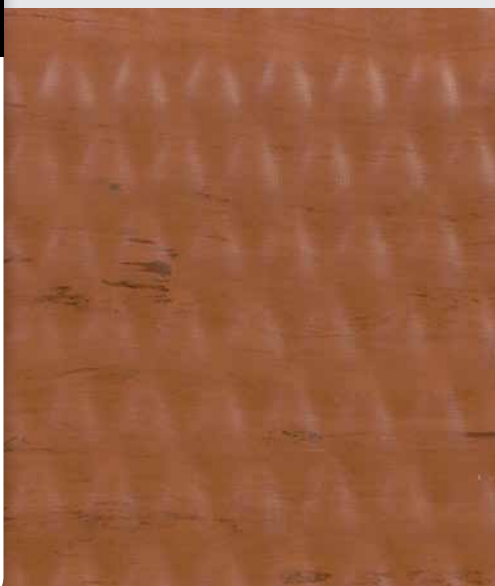
- Closed cell Nitrile rubber cushion provides long lasting comfort
- Extra thick (.170") rubber top ensures long life
- Rubber borders will not crack or curl
- Smooth diamond patterned rubber top allows workers to pivot freely
- Surface is easy to clean
- Cushion is not glued on but is permanently molded to rubber top eliminating the possibility of delamination
- Available in 5/8" and 7/8" thicknesses
- Anti-static

SIZES

2' x 3'
3' x 5'
3' x 12'
4' x 6'
Additional lengths up to 60'. See price list for all additional sizes.

Sizes are approximate.

ANTI-FATIGUE/INDOOR



-  Rubber marbelized surface
-  Nitrile rubber
-  Closed-cell Nitrile cushion



10 midnight swirl

11 granite dusk

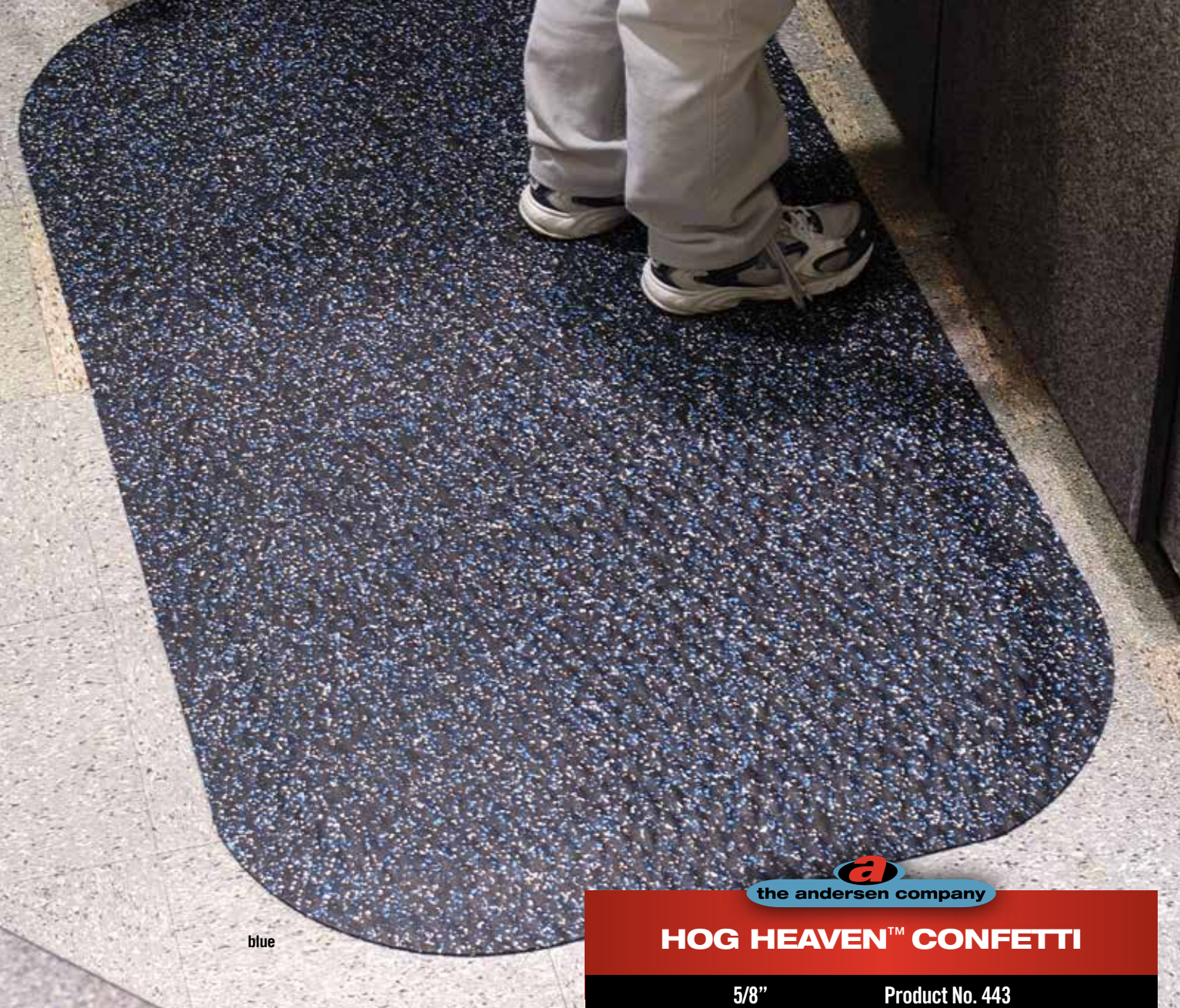
12 blue merle

13 amber maple

14 vintage pecan



MADE
IN THE
USA



blue





HOG HEAVEN™ CONFETTI

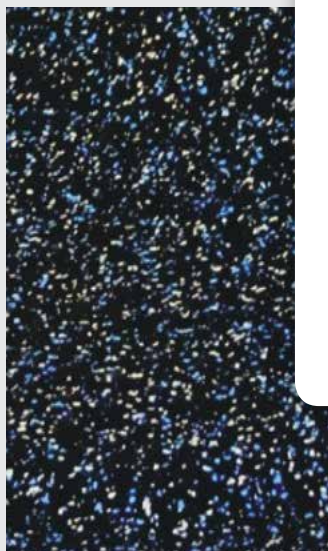
5/8"
7/8"

Product No. 443
Product No. 444

ANTI-FATIGUE/INDOOR



-  95% post consumer rubber from tires
-  closed cell Nitrile cushion



- Earth-friendly 95% recycled post-consumer rubber car tire top surface
- Closed-cell Nitrile rubber cushion backing provides long-lasting comfort without breaking down
- Beveled edges and curved corners create a safer transition from mat to floor
- Welding safe
- Available in two thicknesses: 5/8" and 7/8"
- Static dissipative construction makes these mats ideal for industrial, commercial, retail, hospitality, and health care applications

SIZES

2' x 3'
3' x 5'
3' x 12'
Additional lengths up to 60'. See price list for all additional sizes.

Sizes are approximate.



10 blue

12 grey

13 green

HOG HEAVEN™ FASHION

5/8"
7/8"

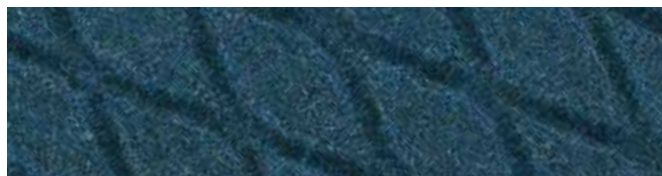
Product No. 441
Product No. 442

- Anti-static, slip-resistant 100% solution-dyed polypropylene top surface will not fade
- Solution-dyed fabric is molded to a solid Nitrile rubber surface for best durability
- Closed-cell Nitrile rubber cushion backing is molded to the Nitrile surface, providing a comfortable long-lasting mat
- Beveled border remains flexible for the life of the product and will not crack or curl
- All Hog Heaven™ mats are certified slip resistant by the National Floor Safety Institute
- Available in two thicknesses: 5/8" and 7/8"
- Ideal uses include concierge desk, bellman stand, copier station, registration desk and shipping desk

SIZES

2' x 3'
3' x 5'
3' x 12'
Additional lengths up to 60'.
See price list for all additional sizes.

Sizes are approximate.



ANTI-FATIGUE/INDOOR



cobalt blue



320 granite

321 cocoa brown

322 cobalt blue

323 coal black

HOG HEAVEN™ PLUSH

5/8"
7/8"

Product No. 446
Product No. 447

- Anti-static, slip-resistant 100% solution-dyed nylon top surface will not fade
- Closed-cell Nitrile rubber cushion backing provides long-lasting comfort without breaking down
- Beveled edges and curved corners create a safer transition from mat to floor
- Designed for maximum worker comfort and striking appearance
- All Hog Heaven™ mats are certified slip resistant by the National Floor Safety Institute
- Available in two thicknesses: 5/8" and 7/8"
- Ideal uses include concierge desk, bellman stand, copier station, registration desk and shipping desk

SIZES

2' x 3'
3' x 5'
3' x 12'
Additional lengths up to 60'.
See price list for all additional sizes.

Sizes are approximate.



ANTI-FATIGUE/INDOOR



brandywine



10 navy spice

11 cinnamon

12 confetti grey

13 forest green

14 brandywine



Linkable
Grip Surface
caution yellow border

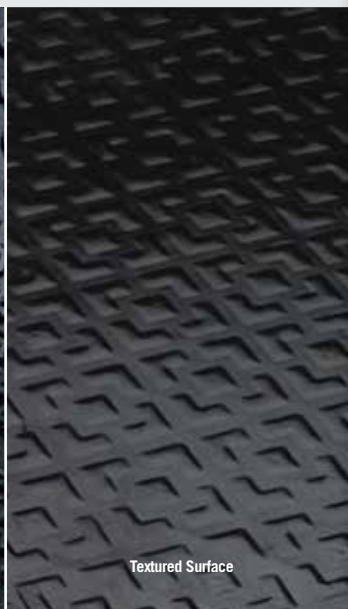


Textured Surface
caution yellow border

ANTI-FATIGUE/DRY OR WET ENVIRONMENTS/INDOOR



Grip Surface



Textured Surface



the andersen company

HAPPY FEET™

BLACK BORDER

Textured Surface	Product No. 465
Grip Surface	Product No. 475
Linkable	
Textured Surface: End	Product No. 467
Linkable	
Textured Surface: Middle	Product No. 469
Linkable	
Grip Surface: End	Product No. 477
Linkable	
Grip Surface: Middle	Product No. 479

STRIPED BORDER

Textured Surface	Product No. 466
Grip Surface	Product No. 476
Linkable	
Textured Surface: End	Product No. 468
Linkable	
Textured Surface: Middle	Product No. 470
Linkable	
Grip Surface: End	Product No. 478
Linkable	
Grip Surface: Middle	Product No. 480

- Constructed with a dense cushion encapsulated within oil/grease proof Nitrile rubber
- Green friendly, Nitrile rubber has 20% recycled content
- Static dissipative. Safe for use in computer rooms and electrical part manufacturing areas.
- Certified slip-resistant by the National Floor Safety Institute
- Cleated back to minimize movement and maximize safety. Additional safety is provided by low profile, beveled borders. Will not curl or crack.
- Available with OSHA approved striped borders
- Welding safe
- Available in 2 surface types...
Textured Surface: For dry/damp areas where traction is unnecessary. Grip Surface: For wet areas where maximum traction and/or scraping is needed.

SIZES

2' x 3'
3' x 5'
3' x 10'

Sizes are approximate.



01 danger red

02 caution yellow

03 warning orange

04 safety green

black

**ANTI-FATIGUE/SLIP RESISTANT
WET OR DRY ENVIRONMENTS/INDOOR**



the andersen company

AIRFLEX™ ALL RUBBER

Product No. 406

- Earth friendly 20% post-consumer recycled rubber content
- Highly chemical-resistant Nitrile rubber backing provides anti-fatigue cushion during use, giving maximum durability and longer surface life
- Grease/oil proof
- Comfortable, functional dome design provides excellent relief from back and leg stress
- Certified slip resistant by the National Floor Safety Institute
- Perfect for parts counter and commercial applications and for work in wet or dry environments

SIZES

2' x 3'
3' x 5'

Sizes are approximate.



the andersen company

KNEELING COMFORT™

Product No. 433

- Closed-cell blended Nitrile rubber cushion with Nitrile rubber base – 7/8" thick
- Static dissipative, grease/oil proof
- Will not absorb liquids
- Reduces knee trauma and low back stress
- Built-in handle is convenient to carry & store
- Cleans easily with soap and water
- Ideal for occupations that require kneeling such as construction workers, technicians, mechanics, engineers, utility workers, manufacturers or anyone who moves from place to place to perform work tasks

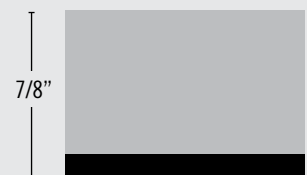
SIZES

12" x 22"

Sizes are approximate.



ANTI-FATIGUE/INDOOR-OUTDOOR



- 100% Nitrile rubber base
- closed cell Nitrile rubber cushion

100%
customer satisfaction
GUARANTEED

NFSI
HIGH-TRACTION



**MADE
IN THE
USA**

Comfort Flow



COMFORT FLOW & COMFORT SCAPE

Comfort Flow

Product No. 420

Comfort Flow connector clips

Product No. 531

Comfort Scape

Product No. 430

**ANTI-FATIGUE/SLIP RESISTANT/DRY OR WET ENVIRONMENTS
INDOOR-OUTDOOR**



Comfort Flow



Comfort Scape



Comfort Flow Grit



Comfort Scape Grit

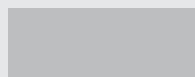
Comfort Flow connector clips



Side to Side

End to End

3/8"



Dense closed-cell
Nitrile cushion

- High Density Closed Cell Nitrile rubber cushion has 15% recycled content
- Grease and oil proof, chemical resistant
- Welding Safe and static dissipative
- Beveled edges for safe transition from mat to floor
- Lifetime anti-microbial treatment to prevent odors and degradation of the mat
- Comfort Flow has drainage holes to allow liquids to flow through. Comfort Scape has non-draining surface
- Light weight and flexible for easy handling and cleaning
- Certified slip resistant by National Floor Safety Institute
- Recommended for kitchens and industrial applications

SIZES

2' x 3'
3' x 5'
4' x 6'
3' x 9'

Sizes are
approximate.

COMFORT FLOW GRIT & COMFORT SCAPE GRIT

Comfort Flow Grit

Product No. 4200

Comfort Scape Grit

Product No. 4300

- Same features as above, but with an added aggressive silicon carbide anti-slip top surface



COMFORT MATE

1/2" Black

1/2" Red

7/8" Black

7/8" Red

Product No. 301

Product No. 302

Product No. 303

Product No. 304

- Black Comfort Mate mats are grease-resistant
- Red Comfort Mate mats are made of a Grease and Oil proof Nitrile Rubber compound
- Comfort Mate 1/2" features ramp borders for smooth transition from mat to floor
- 7/8" thick Comfort Mate edges are squared off
- Connectors are available for 7/8" (Product No. 31)
- Comfort Mate Red and Black are designed with large holes for maximum drainage

SIZES

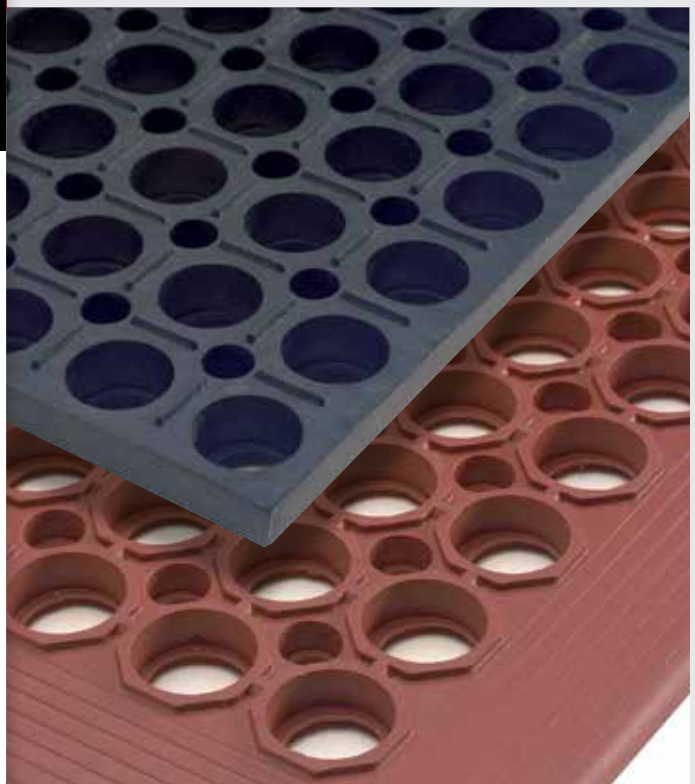
3' x 5'

Sizes are approximate.



Connectors

ANTI-FATIGUE/DRY OR WET ENVIRONMENTS/INDOOR





with holes



CUSHION STATION™

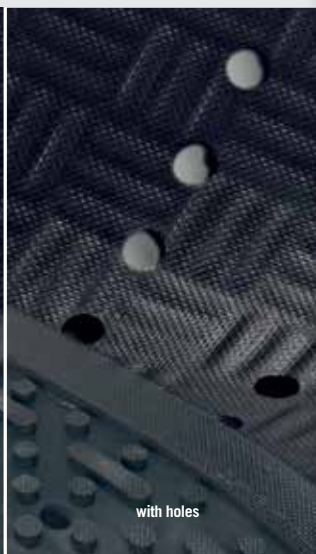
ANTI-FATIGUE/DRY OR WET ENVIRONMENTS/INDOOR

without holes
with holes

Product No. 370
Product No. 371

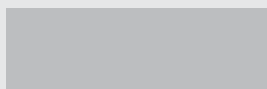


without holes



with holes

7/16"



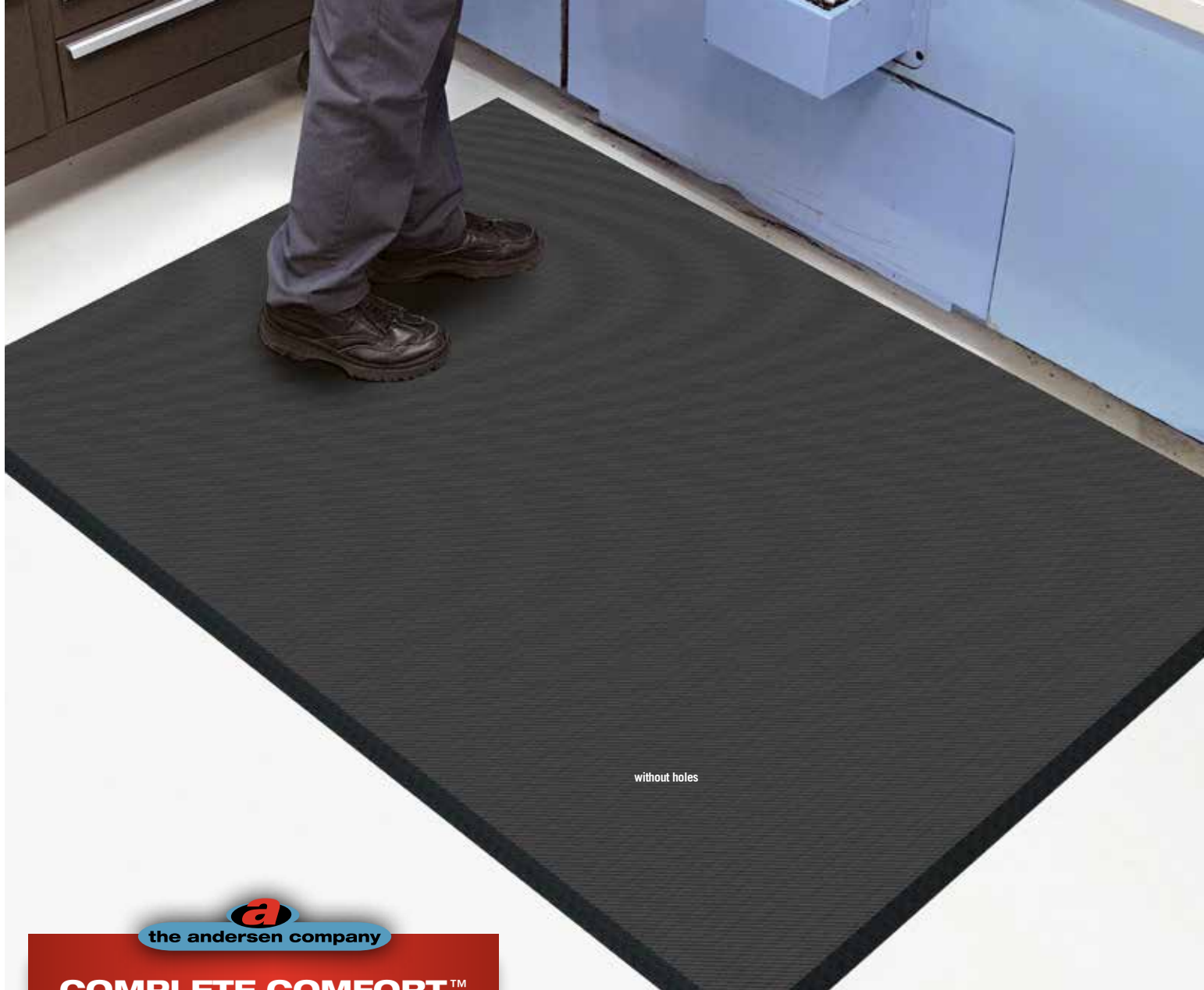
Dense closed-cell Nitrile
rubber cushion

- Highly durable closed-cell Nitrile rubber cushion combined with uniquely designed construction affords excellent anti-fatigue properties
- Grease and oil proof
- Static dissipative
- Welding safe
- Designed for use in wet or dry areas. Available with and without holes
- Anti-microbial treated for lifetime protection against odors and degradation
- 7/16" thick; available in standard sizes up to 20' long
- Flexible Nitrile cushion construction can be cleaned easily
- May be Autoclave sterilized
- Cushion Station™ mats are ideal for use in machine shops, work stations or other heavy industrial applications, medical facility environments (i.e., operating rooms, delivery rooms, etc.) kitchens, showers, and locker rooms

SIZES

2' x 3.2'
3.2' x 5.3'
3.2' x 8.3'
3.2' x 12.3'
3.2' x 16.1'
3.2' x 20.1'
4' x 5.92'
4' x 8.3'
4' x 12.3'
4' x 16.1'
4' x 20.1'

Sizes are
approximate.



COMPLETE COMFORT™

without holes
with holes

Product No. 494
Product No. 496

- Ergonomically superior anti-fatigue mat
- 100% closed-cell Nitrile rubber construction with anti-microbial properties
- Beveled edges for easier floor to mat transition
- Slip resistant surface is oil/grease proof and chemical resistant
- Light weight and easy to clean
- Available in 6 standard sizes or 3' and 4' widths up to 75' in length
- Color: Black
- Recommended for wet and dry areas such as kitchens or industrial areas

SIZES

2' x 3'
3' x 4'
3' x 5'
3' x 10'
4' x 6'
4' x 8'
Additional lengths up to 75'.
See price list for all additional sizes.

Sizes are approximate.

ANTI-FATIGUE/INDOOR-OUTDOOR



MADE
IN THE
USA



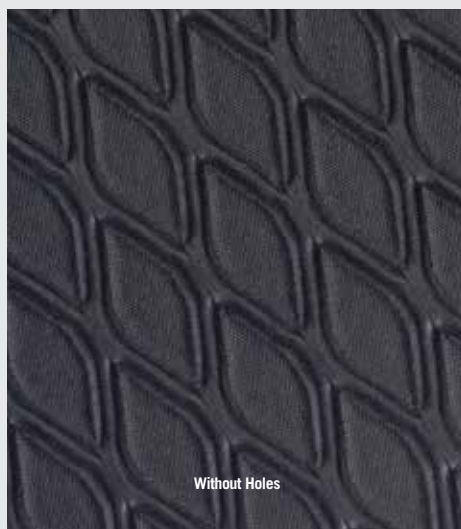
Without Holes

a
the andersen company

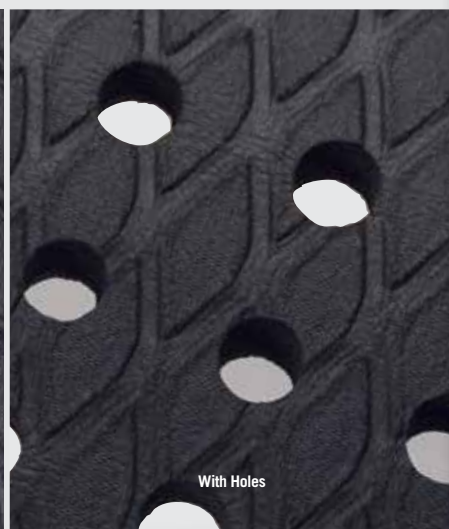
CUSHION MAX

With Holes Product No. 413
Without Holes Product No. 414

ANTI-FATIGUE/DRY OR WET ENVIRONMENTS/INDOOR



Without Holes



With Holes

- Closed-cell Nitrile blended cushion
- Chemical Resistant, Grease & Oil Proof
- Diamond patterned top surface is certified slip resistant by National Floor Safety Institute
- Lasts 3 times longer than traditional 100% PVC foam mats
- Tapered border provides a safe transition from the mat to the floor
- 5/8" thick

SIZES

2' x 3'
3' x 5'
3' x 12'
4' x 6'
Additional lengths up to 45'.
See price list for all additional sizes.

Sizes are approximate.

TRACTION TREAD

Product No. 50

- Slip-resistant floor protection matting made from chemical-resistant Nitrile rubber
- 1/8" thick, 20% post-consumer recycled rubber content
- UV protected, grease/oil-proof, welding safe and static dissipative
- Designed for various applications including laboratories, locker rooms, parts departments, and other commercial and industrial applications

SIZES

33" x 40' Roll
44" x 40' Roll
58" x 40' Roll

See price list for all additional sizes.

Sizes are approximate.



TRACTION TREAD SOFT

Product No. 56

- Slip-resistant floor protection matting made from chemical-resistant, high density Nitrile rubber foam
- 1/4" thick and contains 15% post-consumer recycled rubber content
- UV protected, grease/oil-proof, welding safe and static dissipative
- Anti-microbial treated
- Ideal for numerous production locations, walkways, gym floor protection, parts counters, lab areas and food service applications

SIZES

33" x 40' Roll
44" x 40' Roll
58" x 40' Roll

See price list for all additional sizes.

Sizes are approximate.



Sure Cushion Ribbed

Sure Cushion Texture

Sure Cushion Heavy Duty

Sure Cushion Yellow Border

Sure Cushion V-Groove

** NOT guaranteed against damage from high heels, casters or chair legs. Not recommended for use in wet areas.*

the andersen company

SURE CUSHION RIBBED

Product No. 415

- 3/8" ribbed PVC foam*

SIZES

2' x 3'	2' x 60'
3' x 5'	3' x 60'
3' x 12'	4' x 60'

Additional lengths up to to 60'. See price list for all additional sizes. Sizes are approximate.

the andersen company

SURE CUSHION TEXTURE

Product No. 425

- 3/8" textured PVC foam*

SIZES

2' x 3'	3' x 12'
3' x 5'	3' x 60'

Additional lengths up to to 60'. See price list for all additional sizes. Sizes are approximate.

the andersen company

SURE CUSHION HEAVY DUTY

Product No. 428

- 1/2" PVC foam for heavy use areas*
- 80 mil solid vinyl surface combined with a non-closed cell vinyl cushion back
- Beveled on all sides for safety

SIZES

2' x 3'	3' x 12'
3' x 5'	3' x 60'

Additional lengths up to to 60'. See price list for all additional sizes. Sizes are approximate.

the andersen company

SURE CUSHION YELLOW BORDER

Product No. 427

- 3/8" PVC foam with yellow border on two sides*

SIZES

2' x 3'	3' x 12'
3' x 5'	3' x 60'

Additional lengths up to to 60'. See price list for all additional sizes. Sizes are approximate.

the andersen company

SURE TREAD V-GROOVE

Product No. 505

- 1/8" solid vinyl
- Chemical resistant
- Provides protection for all types of floors from abuse due to chairs, tables and foot traffic
- Great for walkways, inclines and ramps
- Can be rolled for easy storage

SIZES

3' x 105'
4' x 105'
Additional lengths available. Sizes are approximate.



MADE IN THE USA



TRACTION HOG II™

Without Holes
Drainable (with holes)

Product No. 4418
Product No. 4419

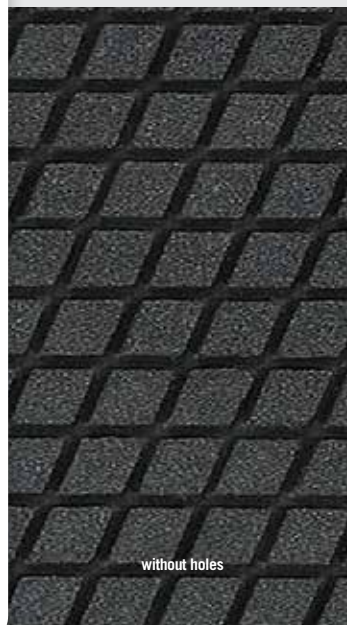
- Diamond Patterned Grit Top provides a slip resistant surface in wet and oily environments
- High Density Closed Cell Nitrile Rubber Cushion has 15% recycled content
- Grease and oil proof, chemical resistant
- Welding Safe
- Beveled edges for safe transition from mat to the floor
- Lifetime anti-microbial treatment to prevent odors and degradation of the mat
- Drainage holes allow liquids to flow off the mat
- Backing designed to reduce the movement of the mat even with cart traffic
- Flexible for easy handling
- Recommended for Kitchens, Coolers, Freezers and Industrial applications

SIZES

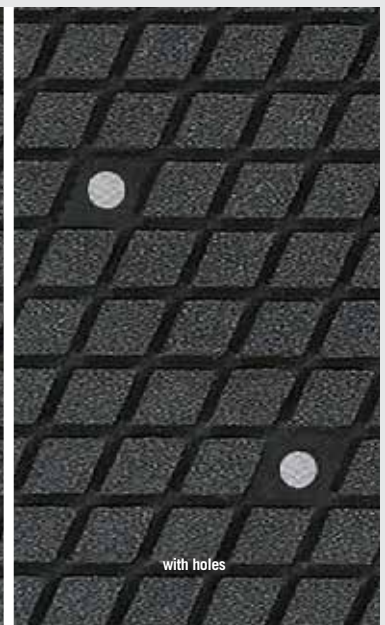
3' x 5'
3' x 9'

Sizes are approximate.

SLIP-RESISTANT/WET ENVIRONMENTS/INDOOR



without holes



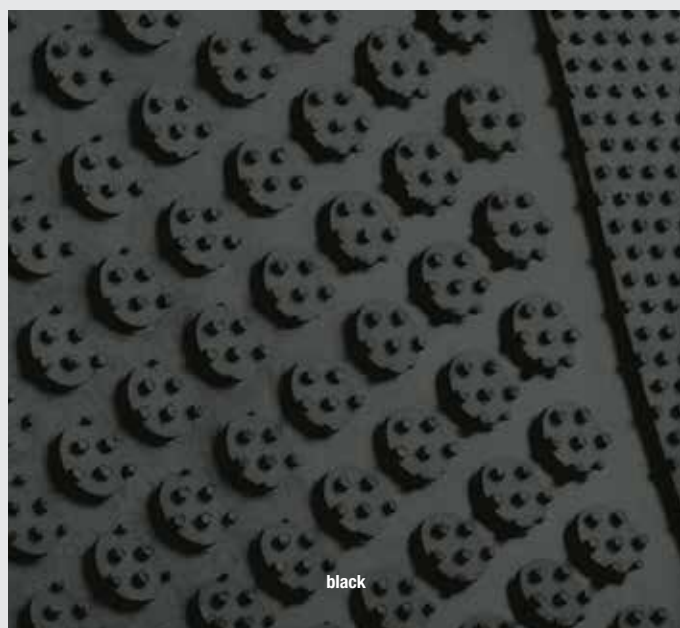
with holes



**MADE
IN THE
USA**



SLIP-RESISTANT/INDOOR-OUTDOOR



black

the andersen company

SAFETY SCRAPE™

Product No. 545

- Molded grip-surface effectively scrapes tough dirt and grime off shoes and provides an excellent anti-slip surface
- Durable Rubber construction
- Earth-friendly; has 20% recycled rubber content
- UV Stable
- Available in cleated backing
- All Safety Scape™ mats are certified slip resistant by the National Floor Safety Institute
- Recommended for use in locker rooms, outside of entrances and grocery store produce areas

SIZES

2' x 3'
3' x 5'
3' x 10'
4' x 6'
4' x 10'

Sizes are approximate.



THE ANDERSEN ENVIRONMENTAL POLICY

The Andersen Company Inc. believes that businesses are responsible for achieving good environmental practices and operating in a sustainable manner.

We are therefore committed to reducing our environmental impact and continually improving our environmental performance as an integral and fundamental part of our business strategy and operating methods.

Our Policy is to:

- Wholly support and comply with or exceed the requirements of current environmental legislation
- Minimize our waste and then reuse or recycle as much of it as possible
- Minimize energy and water usage in our buildings and processes in order to conserve supplies, and minimize our consumption of natural resources, especially where they are non-renewable
- Apply the principles of continuous improvement in respect of air, water, noise and light pollution from our premises and reduce any impacts from our operations on the environment and local community
- As much as possible, purchase products and services that do the least damage to the environment and encourage others to do the same
- Assess the environmental impact of any new processes or products we intend to introduce in advance
- Ensure that all employees understand our Environmental Policy and conform to the high standards it requires
- Address complaints about any breach of our Environmental Policy promptly and to the satisfaction of all concerned
- Update our Environmental Policy annually in consultation with staff, associates and customers

LAST YEAR WE RECYCLED...

- 89% of our waste stream
- 1,686,030 lbs of recycled rubber into our products, keeping over 57,000 car tires out of our landfills
- Over 18 million (949,028 lbs) 20 oz recycled drink bottles (PET Polyester) in the manufacturing of our Waterhog Eco products. If you placed these bottles end to end they would reach from Atlanta to San Francisco.
- Over 32,000 mats (220,847 lbs). If placed in one stack of 3' x 5' mats, the stack would be taller than an 80 story building.



We have over 50 products with recycled content.

Four of our products have over 85% total recycled content:

- ***Superscrape Eco***
- ***Eco Select***
- ***Enviro Plus***
- ***Eco Berber***



MAT RECYCLING PROGRAM



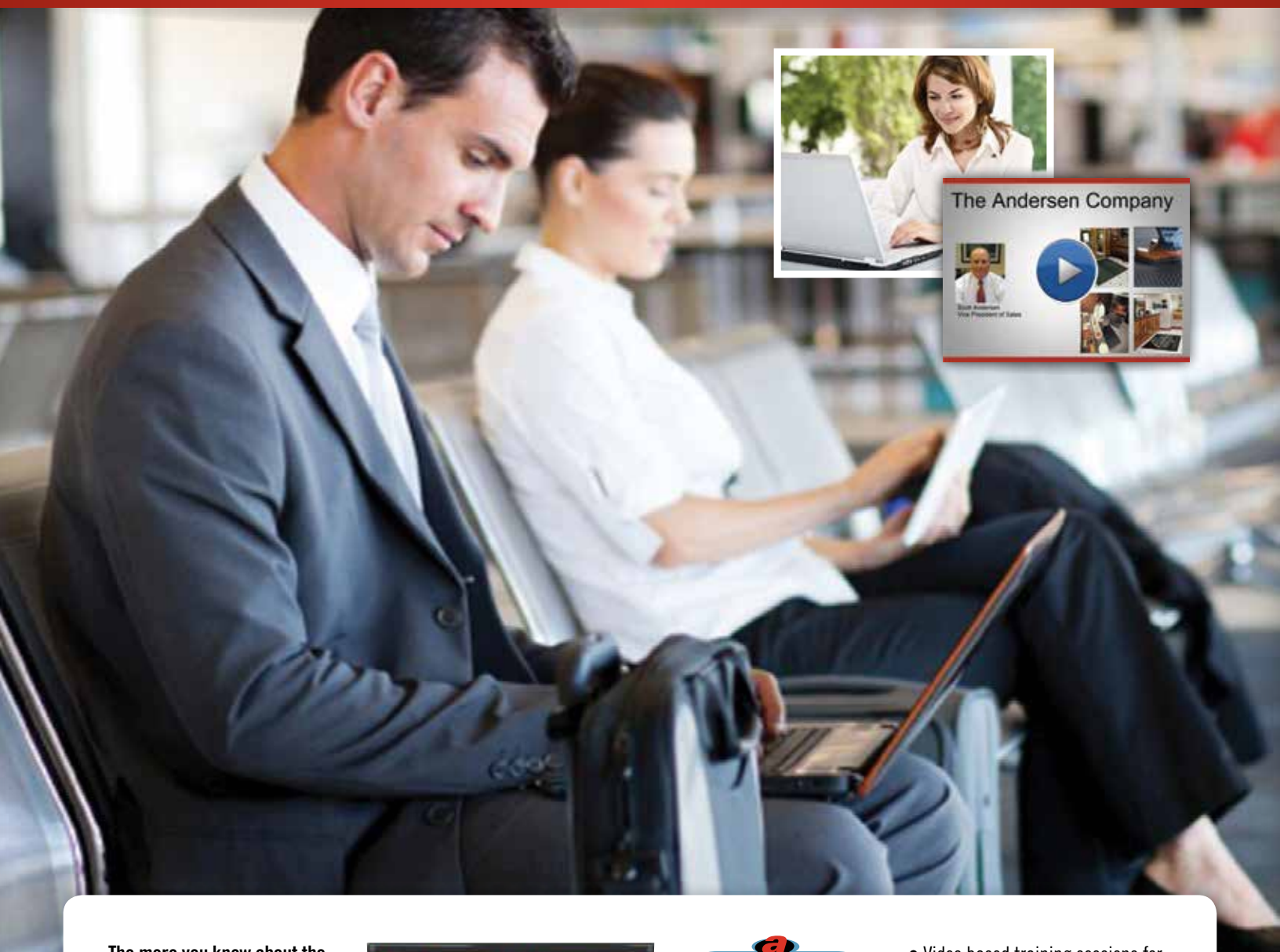
The Andersen Company is pleased to offer our customers the capabilities of recycling all obsolete or worn out rubber backed mats. We certify that none of the mats returned are placed in a landfill. The obsolete or worn out mats will be ground up to be used either in manufacturing other mats or used for boiler fuel.

For more information, call us at 1-800-241-4696 or e-mail info@andersenco.com



The Andersen Company now offers **ON-DEMAND TRAINING**

Anytime, anywhere...for our distribution partners!



The more you know about the Andersen matting product line, our services and how to sell our products, the more successful you will be growing revenues for your company.

That's why Andersen developed on-demand training; so your sales representatives can be updated accurately and effectively at their convenience, 24/7! Newly hired sales staff can get up to speed quickly on the entire Andersen product line and experienced sales staff can understand the product even better, selling more confidently.



- Video based training sessions for ALL mobile devices
- Provides consistent training for all staff members.
- Accessible through the Andersen Mobile App
- Andersen can track sales team participation and test results
- Train at YOUR convenience



All New! Andersen Mat Selling Tool!

www.mobileapp.andersenco.com

Professionalize the mat selling process

- Organized facility survey program allows you to select the proper mat by mat type and style for each location with a link to the selected product literature sheet
- When survey is complete a survey spreadsheet is emailed to surveyor for final pricing information

Close more deals with...

- The video library
- Buy vs. rent cost comparison and literature to better compete with rental mat programs
- Our logo mat proof database with access to over 1,000,000 art proofs
- Email-able sales sheets selected from the Literature Library
- Easy access to all catalogs and our Suggested Retail Price List
- Product and service testimonials

Learn more about mats with...

- Access to our Mat Education section
- The Green matting section

Designed for tablet and smart phone use including iPads, iPhones and Android tablets




the andersen company



ONE SOURCE FOR MATS



www.andersenco.com

THE ANDERSEN COMPANY • 340 CROSS PLAINS BLVD • DALTON, GA 30721
TOLL FREE 800.241.4696 • 706.277.2551 • FAX 706.277.3170

Follow us on  facebook and  twitter