



*Carpet Care*



*Carts &  
Mopping  
Systems*



*Floor Care*



VACUUM SYSTEMS



# HD 14/18

## Upright Vacuums Quality. Performance. Durability.

Protecting your carpet investment requires a powerful and dependable vacuum. The HD 14 and HD 18 have the versatility of a commercial upright vacuum with an onboard pullout wand that performs detail work using a single vacuum.

The NaceCare HD 14 and HD 18 combine ergonomic design, effortless handling, quiet operation and superior soil removal. This commercial vacuum is lightweight and maneuverable. The ergonomic, lightweight handle ensures operator comfort. An indicator light signals when the bag is full.

The durable stretch hose expands to four times its stored length. The vacuum throat is easily accessible for unclogging trapped debris. Integrated hose strain relief reduces kinking and extends the life of the hose during repetitive use.

The electronic brush shutoff mechanism detects lodged debris in the roller brush chamber. The roller brush automatically shuts down and an indicator light changes to red. This protects the motor, belt, pulley and bearings. At 66 dB(A) the HD upright vacuum exceeds the industry standards for quiet vacuums. This low-decibel level reduces worker fatigue and disruption to occupants in buildings.

The three-stage filtration system includes a top-fill bag, intake filter, and an exhaust filter. An optional HEPA filter providing 99.97% efficiency at 0.3 microns is also available. Both the HD 14 and HD 18 meet or exceed the standards required by LEED-EBOM and CIMS-GB and they are also both approved by The Carpet and Rug Institute. The HD series makes it easy to change the filter bag since the large capacity, top- fill bag simply fits easily into the vacuum chamber. The unit will not run without a bag installed and the door is sealed with a single position latch for easy access.



HD 14

MODEL	HD 14"	HD 18"
Vac Motor	1,000W	1,000W
Performance - Water Lift	118"	118"
Performance - Airflow	63 cfm	63 cfm
Brush Motor	200W	300W
Brush RPM	4,000 rpm	3,500 rpm
Capacity	6.5 quart	6.5 quart
Weight	16 lbs.	17 lbs.
Noise Level	66 dB(A)	66 dB(A)
Power Cord	50'	50'



HD 18

## Key Features

- Four-position brush height adjustment with indicator light
- Bag full indicator light
- Won't run without a bag installed
- Electronic brush shutoff protects motor if brush becomes jammed
- Upper body goes right to the floor to get under beds and furniture
- Quick-change brush strip
- Four-stage filtration standard
- Optional HEPA filter available on all units
- V belt for long life
- 4:1 stretch hose
- Easy bag installation
- Dual-motor performance
- Optional accessories include dusting brush and upholstery tool
- Carpet and Rug Institute Certified
- Crevice tool standard



Illuminated on/off switch



On board vacuum wand



Four position height adjustment



Quick change brush strip



Top fill bag



Roller brush indicator light



Optional HEPA filter available



NaceCare upright and canister vacuums meet the stringent certification requirements for the Carpet and Rug Institute (CRI).



QUIET Technology



TIME Saver



SOIL Removal



HEPA Filtration (Optional)

# PVR 200/HENRY

## Provac Dry Canister Vacuums

PVR 200 (Henry) and PVR 380 have powerful 1,200-watt vacuum motors providing 110" of lift and 114 cfm for excellent soil recovery and longer carpet life. With noise levels of 47 dB(A) on low power and 49 on high, these units are excellent for daytime cleaning.

Autosave starts the vacuum on low speed, reducing power consumption by 50% while only reducing suction 25%. When equipped with a HEPA-FLO bag, our standard filtration is 0.3 micron at 99.97% efficiency, improving indoor air quality and reducing dust in the building.

Built for commercial use, they are equipped with a thermal overload for long-term motor protection and operator safety. The rewind head conveniently stores the 33' power cord internally, preventing cord damage from improper wrapping; both units now offer a quick-change cord requiring no tools. PVR 200 (Henry) now offers wand docking on 1 1/4" wands.



PVR 200 / HENRY



Wand docking



Quick change cord

MODEL	PVR 200	PVR 380
Motor	1,200W, 1.6 Hp, 2 stage, 2 speed	1,200W, 1.6 Hp, 2 stage, 2 speed
Water Lift	110"	110"
Airflow	114 cfm	114 cfm
Capacity	2.5 gal.	4.5 gal.
Standard Filtration*	0.3 micron	0.3 micron
Microtex Combination*	99.97% eff.	99.97% eff.
Weight	15 lbs.	18 lbs.
Power Cord	33'	33'
Noise Level	47/49 dB(A)	47/49 dB(A)
Tank Construction	Polypropylene	Structural Foam

\* Meets HEPA spec for non-hazardous recovery and exceeds LEED-EB spec



# PVR 380



PVR 380



Rewind head and AUTOSAVE are standard features!



Powerful 1.6 HP 2 stage vacuum motor



Standard Microtex Combination filter



NaceCare upright and canister vacuums meet the stringent certification requirements for the Carpet and Rug Institute (CRI).



QUIET Technology



TIME Saver



SOIL Removal



HEPA Filtration



ECO EnergySaver

# PVR 390

## Provac Dry Canister Vacuum

The PVR 390 is in a class of its own as the first canister vacuum to include on-board storage for more than just vacuum tools. A telescoping handle allows for compact storage while the built-in wand holder makes transporting a breeze. With a powerful 1,200-watt vacuum motor, it has 110" of lift and 114 cfm for excellent soil recovery and longer carpet life.

With a noise level of 47 dB(A) on low power and 49 on high, this unit is excellent for daytime cleaning. When equipped with a HEPA-FLO bag, our standard filtration is 0.3 micron at 99.97% efficiency, improving indoor air quality and reducing dust in the building.

The rewind head conveniently stores the 33' power cord internally, preventing cord damage from improper wrapping; also it now comes with a quick-change cord requiring no tools. Autosave starts the vacuum on low speed, reducing power consumption by 50% while only reducing suction 25%.

This unit is a clear choice for any facility large or small.



PVR 390

MODEL	PVR 390
Motor	1,200W, 1.6 Hp, 2 stage, 2 speed
Water Lift	110"
Airflow	114 cfm
Capacity	4 gal.
Standard Filtration*	0.3 micron
Microtex Combination*	99.97% eff.
Weight	19 lbs.
Power Cord	33'
Noise Level	47/49 dB(A)
Tank Construction	Structural Foam

\* Meets HEPA spec for non-hazardous recovery and exceeds LEED-EB spec



On-board  
wand storage



Convenient storage caddy



Rewind head and AUTOSAVE are standard features!



Quick change cord



NaceCare upright and canister vacuums meet the stringent certification requirements for the Carpet and Rug Institute (CRI).



QUIET Technology



TIME Saver



SOIL Removal



HEPA Filtration



ECO EnergySaver

# NSP AND NSR SERIES

## NuSave Canister Vacuum (Dry)

The NSP and NSR series from NaceCare are without a doubt the market leaders in "green" vacuums. With Autosave as standard, they start on low to save energy, yet when needed high power is only a "flick" of a switch away. With noise levels of 45 dB(A) on low power and 47 dB(A) on high, these units are excellent for daytime cleaning.

## Unbelievable Soil Recovery without Compromise!

A new specially designed floor tool recovers the same amount of soil on low power (400-watts) as our ProVacs (PVR 200, 380, 390) do on high (1200-watts). With this kind of performance, the high setting is only needed in special circumstances.

## Filtration

With the NSP 200 at 98.6% efficient at 0.5 micron and the NSR series at 99.97% efficient at 0.3 microns, soil retention is not an issue. This improves indoor air quality and reduces dust in the building. They are both LEED-EB compliant and the NSR series meets HEPA for nonhazardous soil recovery!

## Power Consumption

On the low setting at 400-watts, NuSave vacuums consume 1/3 of the power of most vacuums on the market today while recovering the same amount of soil. Based on this, the cost savings are significant.

### Background Information (ASSUMING PROFESSIONAL USE OF 6 HOURS PER DAY)

Cost Per kwh	\$0.90		
Cost per hour (1,200W)	\$0.108	Cost per day @1,200 watts	\$0.64
Cost per hour (800W)	\$0.072	Cost per day @ 800 watts	\$0.42
Cost per hour (400W)	\$0.036	Cost per day @ 400 watts	\$0.21

### At 255 days annual use (51 WEEKS X 5 DAYS WE HAVE)

Cost at 1,200 watts full time	\$163.20	using a 1,200 watt machine full time
Cost at 800 watts full time	\$107.10	using a NuSave machine on high setting full time
Cost at 400 watts full time	\$53.55	using a NuSave machine on low setting full time

### Assuming we use our NuSave machine at 80% on low power and 20% on high, our savings are:

Cost to operate using it 20% of the time on high	\$21.42
Cost to operate using it 80% of the time on low	\$42.84
Total Cost to Operate an NS machine for 255 days is	\$64.26
Savings versus operating a 1200 watt machine are	\$163.20 - \$64.26 = \$98.94 or 60%

*At approximately \$100 a year in savings, our NuSave models certainly make sense. In essence, NuSave recovers soil as well as anything on the market, filters better than anything on the market and saves you money.*



# NSP AND NSR SERIES



NSP 200



NSR 200



NSR 380

## MODEL

MODEL	NSP 200	NSR 200 / NSR 380
Motor	400W / 800W, 2 stage, 2 speed	400W/800W, 2 stage, 2 speed
Water Lift	60" / 90"	60" / 90"
Airflow	81 cfm	81 cfm
Capacity	2.5 gal.	2.5 gal. / 4.5 gal.
Standard Filtration	0.5 micron	0.3 micron
Tritex	98.6% eff.	
Microtex Combination*		99.97% eff.
Weight	13 lbs.	13 lbs. / 18 lbs.
Power Cord	33'	33'
Noise Level	45/47 dB(A)	45/47 dB(A)
Tank Construction	Polypropylene	Polypropylene / Structural Foam

\* Meets HEPA spec for non-hazardous recovery and exceeds LEED-EB spec



NaceCare upright and canister vacuums meet the stringent certification requirements for the Carpet and Rug Institute (CRI).



QUIET Technology



TIME Saver



SOIL Removal



HEPA Filtration



ECO EnergySaver

# PSP 200/380

## ProSave Canister Vacuum (Dry)

Our ProSave series of vacuums boast a 1,200-watt motor that provides 110" of lift and 114 cfm. Combined with filtration of 98.6% efficiency @ 0.5 microns, you have a winning combination. Autosave feature automatically starts the vacuum on low for reduced power consumption.

Noise levels of 47 dB(A) on low power and 49 on high make these units excellent for daytime cleaning. The cord wrap system stores it neatly without tangles while our new "Plug Cable" system allows anyone to change the power cord quickly and easily, reducing downtime.

ProSave and NVH units weigh under 16 pounds, making transporting effortless. NVH 380 also includes a PTO socket for use with our A350E electric power head kit.

All ProSave vacuums are LEED-EB compliant and CRI approved.



PSP 200



PSP 380

### MODEL

### PSP 200/380 / NVH 380 (Electric Power Head Only)

Motor	PSP	1,200W, 1.6 Hp, 2 stage, 2 speed
	NVH	1,200W, 1.6 Hp, 1 stage, 1 speed
Water Lift		110" / 115"
Airflow		114 cfm / 114 cfm
Capacity		2.5 gal. / 4.5 gal.
Standard Filtration		0.5 micron
Microtex Combination		98.6% eff.

Weight	13 lbs. /14 lbs. /15.5 lbs.
Power Cord	33'
Noise Level	47/49 dB(A) / 62 dB(A)
Tank Construction	Poly/Structural Foam



NaceCare upright and canister vacuums meet the stringent certification requirements for the Carpet and Rug Institute (CRI).



QUIET Technology



TIME Saver



SOIL Removal



ECO EnergySaver

# NBV 180/220

## Battery Canister Vacuum (Dry)

With a noise level of only 45 dB(A), they are excellent for daytime cleaning or cleaning any congested or occupied public areas. Cord-free operation improves productivity significantly and eliminates accidents commonly associated with power cords such as tripping over them or getting electrical shocks due to improper care. With 2- and 3-gallon tanks the NBV 180 and NBV 220 both offer plenty of capacity.

The 250-watt vacuum motor coupled with run time of 45 minutes ensures plenty of power to get the job done; the battery provides stable power over the entire discharge. The 36-volt lithium polymer battery can be interchanged between both units and charges in 2.5 hours. The on/off switch and battery status are conveniently located on front of the machine for the operator to see at all times.

When equipped with a HEPA-FLO bag, the filtration is 0.3 micron @ 99.97% efficiency, improving indoor air quality and reducing dust in the building. Weighing in at only 14 pounds, the NBV 180 is compact and lightweight with a durable polyethylene tank.

At 20 pounds, the NBV 220 incorporates all features of our popular and very innovative PVR 390 vacuum including a structural foam tank for durability and built-in cart allowing easy transport of a second battery should it be required.



NBV 180



Lithium polymer batteries



NBV 220

### MODEL

### NBV 180/220

Motor	250W	Standard Filtration*	99.97% eff. @ 0.3 micron
Run Time	45 min.	Capacity	2 gal. / 3 gal.
Charge Time	2.5 hrs.	Weight	14 lbs. / 19.5 lbs.
Water Lift	45"	Noise Level	45 dB(A)
Airflow	50 cfm		

\* Meets HEPA spec for non-hazardous recovery and exceeds LEED-EB spec



QUIET Technology



TIME Saver



SOIL Removal



HEPA Filtration



BATTERY Technology

# RSV 130/200

## Backpack Vacuums Corded

The adjustable back support, waist and shoulder straps are designed to minimize operator fatigue and the hose features swivel fittings to ensure tangle-free operation. All three units are equipped with a four-stage filtration system providing 0.3-micron filtration at 99.97% efficiency, improving indoor air quality and reducing dust in the building.

The patented ribs on inside of the tank ensure no suction is lost no matter how full the bag is because the bag is never allowed to seal against the side of the tank cutting off the flow of air ensuring vacuum performance is guaranteed right up until the bag is full. This is even more critical on battery-powered equipment where we don't have the luxury of high-powered electric vacuum motors to pull the dirt through the bag.

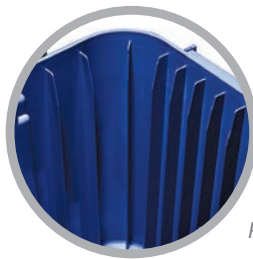
At only 10.8 pounds, the RSV 130 is among the lightest full-size backpacks on the market while the RSV 200 weighs in at only 12 pounds. Both units are extremely powerful offering 1200 watt motors providing 115" of lift and 114 cfm of airflow. For operator safety they are fitted with a thermal protection device.



RSV 130



RSV 200



Patented ribs

### MODEL

### RSV 130 / 200

Motor	1,200W, 1.6 Hp, 1 stage
Water Lift	115"
Airflow	114 cfm
Capacity	1.5 gal. / 2.5 gal.
Standard Filtration	0.3 micron
Microtex Combination*	99.97% eff.

Weight	10.8 lbs. /12 lbs.
Power Cord	42'
Noise Level	65 dB(A)
Tank Construction	Poly

\* Meets HEPA spec for non-hazardous recovery and exceeds LEED-EB spec



NaceCare upright and canister vacuums meet the stringent certification requirements for the Carpet and Rug Institute (CRI).



QUIET Technology



TIME Saver



SOIL Removal



HEPA Filtration



# RBV 130

## Battery Powered Backpack Vacuum (Cordless)

As daytime cleaning becomes even more prevalent, the RBV 130 will certainly play a key role for our clients. With a noise level of 45 dB(A), this unit is excellent for daytime cleaning or cleaning any congested or occupied public area where noise or use of a power cord is an issue.

Cordless operation improves productivity by 30% - 50% and eliminates accidents commonly associated with power cords such as tripping over them or getting electrical shocks due to improper care.

The 1.5-gallon tank provides the capacity required to do the job while a 250-watt vacuum motor with run time of 45 minutes ensures there is plenty of power. The 36-volt lithium polymer battery can be interchanged with our canister units, provides stable power over the entire discharge and charges in 2.5 hours. The on/off switch and battery status are conveniently located for the operator to see at all times.

At 16 pounds, RBV 130 is compact, comfortable and light enough for anyone to use—much lighter than other units on the market.



RBV 130



Lithium polymer batteries



Battery indicator on/off switch

### MODEL

### RBV 130

Motor	250W	Standard Filtration*	99.97% eff. @ 0.3 micron
Run Time	45 min.	Capacity	1.5 gal.
Charge Time	2.5 hrs.	Weight	16 lbs.
Water Lift	45"	Noise Level	45 dB(A)
Airflow	50 cfm		

\* Meets HEPA spec for non-hazardous recovery and exceeds LEED-EB spec



QUIET Technology



TIME Saver



SOIL Removal



HEPA Filtration



BATTERY Technology

# PVR 320H

## HEPA Vacuums Critical Filtration

The NaceCare Series Critical Filtration HEPA vacuums come in one- and two-motor configurations providing 110" of water lift and 114 cfm of airflow or 90" of lift and 160 cfm for excellent soil recovery. The motors carry three-year warranties and the HEPA filter is serialized and provides a minimum 99.97% filtration @ 0.3 microns.

Every machine is sodium flame tested after assembly to ensure they meet or exceed the European #3928 hazardous vacuum standard. All units come with their own test certificate verifying the standard was achieved.

The PVR 320H has a polypropylene tank and a two-speed head that offers ultraquiet operation at 49 dB(A) on high and 47 dB(A) on low. It also offers a quick-change cord that doesn't require tools and an internal cord rewind system that protects the power cord. This unit is an outstanding choice for health-care facilities including hospitals, long-term care facilities and nursing homes. It provides all the filtration capabilities of our larger machines in a quiet, compact unit at a fraction of the cost.



PVR 320H



Filtration certificate



Quick change cord

### MODEL

### PVR 320H

Motor	1,200W, 1.6 Hp, 2 stage, 2 speed
Water Lift	110"
Airflow	114 cfm
Capacity	2.5 gal.
Standard Filtration	0.3 micron
Microtex Combination	99.97% eff.

Weight	16.5 lbs.
Power Cord	33'
Noise Level	47/49 dB(A)
Tank Construction	Poly



NaceCare upright and canister vacuums meet the stringent certification requirements for the Carpet and Rug Institute (CRI).



QUIET Technology



TIME Saver



SOIL Removal



HEPA Filtration



ECO EnergySaver

# NVQ 900H / WVD 900H

## NVQ/WVD (Dry and Wet/Dry)

The NVQ 900H and WVD 900H units come with durable structural foam heads and tanks making them extremely impact-resistant. They carry 10-year warranties on the tanks, providing peace of mind when transporting them. The WVD 900H also provides wet pick-up capability for hazardous materials that need to be dampened prior to recovery in order to prevent airborne contamination.

With health standards evolving such as the EPA's Lead Safe Certified Contractor program, HEPA vacuums are becoming more of a requirement for many industries today. Beginning April 22, 2010, federal law requires that contractors performing renovation, repair and painting projects that disturb more than six square feet of paint in homes, child care facilities, and schools built before 1978 must be certified and trained to follow specific work practices to prevent lead contamination. Our HEPA vacuums meet or exceed the EPA's requirements for such work.



NVQ 900H/WVD 900H



HEPA filter



HEPA-Flo bags

### MODEL

### NVQ 900H / WVD 900H

Motor

1,200W, 1.6 Hp, 2 stage

Power Cord

42'

Tank Construction

Structural Foam

Water Lift

100" / 90"

Airflow

114 / 160 cfm

Standard Filtration

99.97% eff. @ 0.3 micron

Capacity

12 gal.

Weight

44 / 49 lbs.

Noise Level

64 / 67 dB(A)



NaceCare upright and canister vacuums meet the stringent certification requirements for the Carpet and Rug Institute (CRI).



QUIET Technology



TIME Saver



SOIL Removal



HEPA Filtration

# WV 370/470

## Wet/Dry Vacuums

Both units are manufactured from polyethylene so there is absolutely nothing to rust. The WV 370 comes with a handy carrying handle for easy dumping while WV 470 has a drain hose.

They are equipped with 1200 watt bypass motors providing 100" of lift and 95 cfm of airflow for excellent recovery wet or dry.

They come complete with a two-year warranty.

Each unit incorporates our ball float wet shutoff assembly: the ball rotates continually, staying clean and free from debris while ensuring water does not reach the motor.

Both are compact, manoeuvrable and easy to use; an excellent choice where a full-size wet vacuum isn't required or where use as a dry vacuum is needed.



MODEL	WV 370/470		
Motor	1,200W, 1.6 Hp	Weight	19 lbs. / 22 lbs.
Airflow	95 cfm	Power Cord	42'
Water Lift	100"	Noise Level	61 dB(A)
Capacity	4 gal. / 7 gal.	Tank Construction	Polypropylene
Standard Filtration	0.5 micron		



QUIET Technology



TIME Saver



SOIL Removal



# WV 570/800

## Wet/Dry Vacuums

The WV 570 is manufactured from structural foam while WV 800 is polypropylene so there is absolutely nothing to rust.

The WV 570 has a handy carrying handle for easy dumping while WV 800 comes with a drain hose.

The WV 800 has polypropylene tank for maximum durability and the WV 570 hosts a structural foam tank. Both come with a 10-year tank warranty.

Both models feature 1200 watt bypass motors providing 100" of lift and 95 cfm of airflow for excellent recovery wet or dry.

Each comes complete with a two-year motor warranty and a ball float wet shutoff assembly that rotates continually, staying clean and free from debris while ensuring water does not reach the motor.

Not too big, not too small, the WV 570 and WV 800 are just right when a mid-sized wet/dry is what you need.



WV 570



WV 800

### MODEL

### WV 570/800

Motor	1,200W, 1.6 Hp
Airflow	95 cfm
Water Lift	100"
Capacity	6 gal. / 11 gal.
Standard Filtration	0.5 micron

Weight	34 lbs.
Power Cord	42'
Noise Level	64 dB(A)
Tank Construction	Structural Foam / Polyprop.



QUIET Technology



TIME Saver



SOIL Removal

# WV 900/902

## Wet/Dry Vacuums

The structural foam head of both the 900 and the 1800 series is rustproof and durable. Both the head and the tanks come complete with a 10-year warranty. The flexible dump tube permits quick and convenient emptying to a floor drain while the unique tip and pour system on the 900 series allows the tank to be emptied even when a floor drain isn't available.

A vapor barrier can be added to the units to eliminate moisture simply by putting a 13" floor pad into the top of the wet float assembly to prevent any foam or stripper from reaching the vacuum motor.

For wide-area cleaning, a 29" front-mounted squeegee kit can be fitted to either unit. Units with a front-mounted squeegee can recover water at 10,000 sq. ft. per hour.



WV 900 / WVD 902



The unique tip and pour system allows the tank to be emptied even in the absence of a floor drain.



WV 900 / WVD 902



A vapor barrier can be added to eliminate moisture completely

Shown with optional front mount squeegee

### MODEL

### WV 900 / WVD 902

Motor	1,200W, 1.6 Hp / 2-800W, 1 Hp
Water Lift	100" / 90"
Airflow	95 cfm / 160 cfm
Capacity	12 gal.

Power Cord	42'
Weight	44 lbs. / 49 lbs.
Noise Level	64 dB(A) / 67 dB(A)
Tank Construction	Structural Foam



QUIET Technology



TIME Saver



SOIL Removal

# WV 1800/1802P



Continuous Pumper Unit

1800 SERIES

## WV 1800 Series High Capacity Wet Vacuums

The 1800 series wet vacuums deliver dependable power and performance in a rugged unit. Both the tanks and head are manufactured in structural foam and carry 10-year warranties. The DH models have a large-diameter dump hose for fast draining while the P model incorporates a sump pump enabling continuous pumping of fluid without interrupting the vacuuming process.

## WVD 1802P Continuous Pumper

The WVD 1802P enables continuous pumping of liquids during the vacuuming process at a rate of 60 gallons per minute. So, it is ideal for floods, water pipe ruptures, drain back-ups, and industrial spills. The submersible pump is made of durable, stainless steel for heat and chemical resistance. The motor uses a stainless steel shaft and triple seal system and has a thermal protection device to prevent overheating.

MODEL	WV 1800DH	WVD 1802DH	WV 1800P	WVD 1802P
Motor	1,200W, 1.6 Hp	2-800W, 1 Hp	1,200W, 1.6 Hp	2-800W, 1 Hp
Water Lift	100"	90"	100"	90"
Airflow	95 cfm	160 cfm	95 cfm	160 cfm
Capacity - Wed	20 gal.	20 gal.	20 gal.	20 gal.
Power Cord	42'	42'	42'	42'
Weight	81 lbs.	86 lbs.	81 lbs.	86 lbs.
Tank Construction	Structural Foam	Structural Foam	Structural Foam	Structural Foam
Head	Structural Foam	Structural Foam	Structural Foam	Structural Foam
Pump Power			500W	500W
Output			60 gpm	60 gpm
Type			Centrifugal	Centrifugal



QUIET Technology



TIME Saver

# JS 1600C

## Commercial Power Steamer

The power of steam attacks grease, grime, hard water deposits and mold—even kills bed bugs and their eggs—leaving the surface clean and sanitized, all without the use of chemicals

Operator safety is assured by many features including the 12 volt steam controls, a pressure switch, thermostat, high-limit thermal shutoff and pressure relief valve. The tank can be filled while unit is running, allowing for continuous use.

The JS 1600C is excellent on grouted floors, showers, kitchens and just about any area where detail cleaning is a challenge. It's very effective in all food preparation and processing areas and on stainless steel range hoods in industrial kitchens.

It can be used in hotel rooms for spotting draperies and cleaning bedspreads and carpets and even kills bed bugs on a hotel mattress!

In addition the JS 1600C can now be used for cleaning floors simply by adding the optional "steam mop" which comes complete with a 33' hose. The continuous flow system provides all the steam needed to remove dirt and built up soil from your floors while leaving them virtually dry!



Jet Steam 1600C



Shown with optional cart



Steam mop

### MODEL

### JET STEAM 1600C

**Boiler Size**

1.25 quarts

**Boiler Capacity**

4 quarts

**Water Reservoir**

4 quarts

**Heating Power**

1,500W

**Steam Pressure**

115 psi

**Steam Temperature**

338° F

**Power Cord**

8 ft

**Weight**

12 lbs

**Total Power**

1,500W, 120V



TIME Saver



SOIL Removal



KILLS Bed Bug



# K I 122 TST

## Pressure Washer

At 1400 psi and 2.1 gpm (gallons per minute), the new K1122 TST with "Total Stop Start" (TST) has all the features a commercial user needs. It comes complete with 50-foot hose, a variable nozzle (Vario) and a Dirt Killer nozzle; The Vario nozzle adjusts the spray from a fan to a pencil jet while the Dirt Killer nozzle rotates a pencil jet spray on an axis creating a circle with tremendous cleaning ability.

The TST feature stops the pump from running when unit not in use (spraying) and automatically starts the pump when you pull the trigger. The pump has stainless steel ceramic-coated pistons to reduce friction; ensuring years of heavy-duty use. Stainless steel valves and Teflon graphite rings allow it to run dry safely without damaging the pump.

Other features include a pressure gauge, chemical injection hose, hose reel and onboard storage for hose, gun and lances.



K I 122 TST

### MODEL

### K I 122 TST

Pump	Brass, Triplex Piston	Power Cord	23'
Pressure	1,400 psi	Weight	70 lbs.
Motor	1.5 Hp, 13.0 amps	Pressure Hose	50'
Volume	2.1 gpm	Includes	Gun w/ Lance, Vario Nozzle, Dirt Killer Nozzle
Max. Temperature	140° F		

# ACCESSORY KITS

## I 1/4" ProVac Vacuum Kits (PVR Series)

Kit Name	Floor Tool	Description	Hose	Wand
A1	601529	12" Combo	601102	601910
A2	601323	12" Brush/Brush	601102	601910
A300 T	601227	12" Air Turbo	601102	601910

## I 1/2" ProVac Vacuum Kits (PVR Series)

Kit Name	Floor Tool	Description	Hose	Wand
B0	602137	12" Combo	602103	602917
B2	602383	12" Brush/Brush	602103	602917
B1S	8020712	16" Adjustable	602103	4021A5

## I 1/4" NuSave Vacuum Kits (NSP / NSR Series)

Kit Name	Floor Tool	Description	Hose	Wand
E1X	601670	12" Special Combo	601102	601110
AE1	601670	12" Special Combo	601102	601910

## I 1/4" ProSave Vacuum Kits (PSP / NVH Series)

Kit Name	Floor Tool	Description	Hose	Wand
A1X	601529	12" Combo	601102	601110
A2X	601323	12" Brush/Brush	601102	601110
A300 XT	601227	12" Air Turbo	601102	601110
A350 E	Electric Brush	14" Electric Brush	124962	

## I 1/2" ProSave Vacuum Kits (PSP / NVH Series)

Kit Name	Floor Tool	Description	Hose	Wand
E2X	601570	11" Special Combo	601101	601110

## I 1/4" Battery Canister Vacuum Kit (NBV Series)

Kit Name	Floor Tool	Description	Hose	Wand
E2X	601570	11" Special Combo	601101	601110

## I 1/4" Backpack Vacuum Kits (RSV Series)

Kit Name	Floor Tool	Description	Hose	Wand
A0XB	601529	12" Combo	601100	601110
A2XB	601323	12" Brush/Brush	601100	601110
A3XB	35020	15" Sidewinder	601100	601110
A300 TXB	601227	12" Air Turbo	601100	601110
A350 E	Electric Brush	14" Electric Brush	124962	



12" COMBO



12" BRUSH / BRUSH



15" SIDEWINDER



11" SPECIAL COMBO



16" ADJUSTABLE



12" AIR TURBO



14" ELECTRIC BRUSH



16" BRUSH/HARD FLOOR



12" SPECIAL COMBO



12" WET TOOL



16" WET TOOL



29" WET TOOL

## 1 1/2" Backpack Vacuum Kits (RSV Series)

Kit Name	Floor Tool	Description	Hose	Wand
B0XB	602137	12" Combo	602100	602717
B2XB	602383	12" Brush/Brush	602100	602717
B3XB	35163	15" Sidewinder	602100	602717
B1SB	8020713	16" Adjustable	602100	4021A5

## 1 1/4" Battery Backpack Vacuum Kit (RBV Series)

Kit Name	Floor Tool	Description	Hose	Wand
E2XB	601570	11" Special Combo	601100	601110

## 1 1/4" Wet/Dry Vacuum Kits (WV370 / WV470)

Kit Name	Floor Tool	Description	Hose	Wand
A11	601322	12" Brush/Brush	601012	601910
	601323	12" Wet Tool		

## 1 1/2" Wet/Dry Vacuum Kits (900 Series)

Kit Name	Floor Tool	Description	Hose	Wand
B0W	602137	12" Combo	602103	602917
	602380	16" Wet Tool		
BB8	602381	16" Brush-Hard Floor	602103	602917
	602380	16" Wet Tool		

## 1 1/2" Wet Vacuum Kits (900 and 1800 Series)

Kit Name	Floor Tool	Description	Hose	Wand
BB7	602380	16" Wet Tool	602103	602917

## 29" Front Mount Squeegee Kits (900 and 1800 Series)

Kit Name	Floor Tool	Description	Hose	Wand
C2	607476	29" Wet Tool		
C3A	602380	29" Wet Tool		

## 29" Front Mount Combo Kits (900 / 1800 Series)

Kit Name	Floor Tool	Description	Hose	Wand
C2 Combo	607476	29" Wet Tool	601102	601110
(900 Series)	602380	16" Wet Tool		
C3A Combo	606676	29" Wet Tool	601102	601110
(1800 Series)	602380	16" Wet Tool		

# FILTRATION / WARRANTY

HD14/18  
NBV180 / 220  
RBV130  
PSP200  
PSP380  
NSP200  
NSR200 / 380  
PVR200  
PVR380  
PVR390  
RSV130  
RSV200  
PVR 320H  
NVQ900H  
WVD902H

## LEED-EB compliant

98.6% efficient at 0.5 microns with a noise level of less than 70 dBA

## HEPA for non-hazardous

Safe for non-hazardous material pick-up. Improves IAQ by filtering 99.97% of particulates at 0.3 microns.

## Certified HEPA filtration for hazardous use

- Every unit is tested and certified.
- Sealed filter chamber.
- Meets European standard 3928 for hazardous material recovery.

## Uses recyclable or re-usable packaging

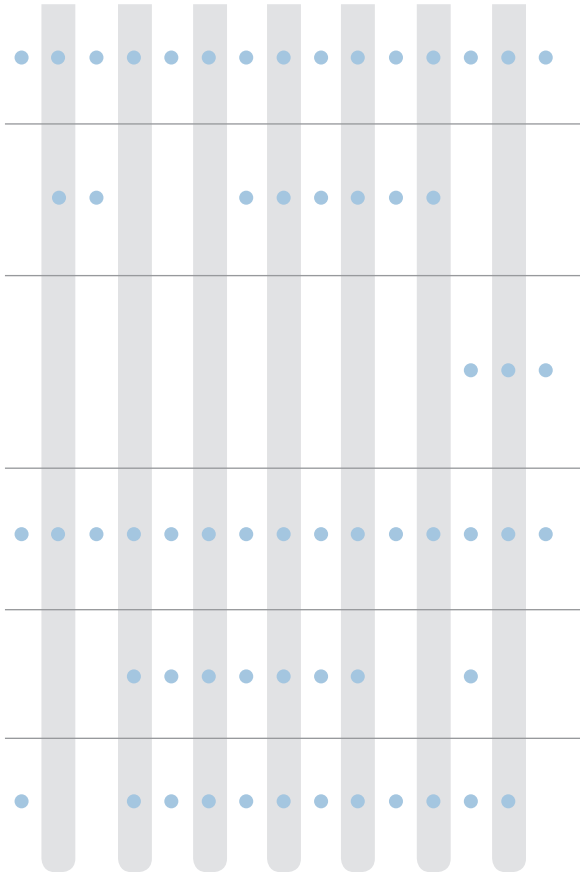
All packaging can be recycled or re-used.

## Reduced power consumption

Uses 50%+ less power on low speed.

## CRI Approved

This program tests for proper soil removal, filtration and carpet texture retention.



## Warranty\*

When purchasing a NaceCare vacuum we give you piece of mind by offering industry leading warranty coverage on all of our products. If a breakdown occurs due to manufacturers defect, simply take the product to your authorised dealer for repair and we take care of the rest.

*\* Please see the NaceCare Solutions full warranty document for complete details and exclusions*

### Upright

Body: 1 Year

Motor: 2 Years

Parts: 1 Year

Labor: 1 Year

### Canister

Tank: 10 Years

Motor: 3 Years

Parts: 2 Years

Labor: 2 Years

### Backpack

Tank: 10 Years

Motor: 3 Years

Parts: 2 Years

Labor: 2 Years

### Battery

Tank: 10 Years

Motor: 2 Years

Parts: 2 Years

Labor: 2 Years

### Wet / Dry

Tank: 10 Years

Motor: 2 Years

Parts: 2 Years

Labor: 2 Years



1205 Britannia Road East,  
Mississauga, Ontario, L4W 1C7

1.800.387.3210 TOLL-FREE

1.800.709.2896 FAX

[www.nacecare.com](http://www.nacecare.com)







*Vacuums*



*Carts &  
Mopping  
Systems*



*Carpet Care*



## FLOOR CARE SYSTEMS



# TTV 678

## Vario Automatic Scrubbers TTV 678 Ride-on Scrubber

With three adjustable scrubbing widths, 26", 30" and 34", and onboard storage for two squeegees, 30" and 40", it fits through any door and can handle any job large or small. Simply pull a pin and the brush deck automatically adjusts in or out to the correct width.

The 678 is fully featured and provides the operator with maintenance-free gel batteries and onboard chemical dispensing.

### Key Features

- Three sizes, one machine
- Fully adjustable flow rate from 0.25 gpm to 1 gpm
- Patented pop-on/pop-off brushes and pad drivers
- LED control panel continuously provides operator with chemical, water flow, brush pressure and battery status
- Adjustable brush pressure and speed
- Six maintenance-free gel batteries provide 4 hours of run time; low-voltage shutoff prolongs battery life
- Tear-away squeegee equipped with quick-release squeegee blades for easy cleaning
- Two squeegee sizes come with each machine
- Onboard chemical dispensing system allows for 32:1, 64:1, 96:1 and 128:1, guaranteeing proper chemical usage
- The gel batteries are completely maintenance free, emit 1/40 of the hydrogen gas of wet lead acid batteries, are spill-proof and can be charged anywhere. The safest, most dependable and longest-life batteries on the market
- Will accept optional off aisle kit that can be stored on the machine



TTV 678

### PRODUCTIVITY CHART / IN SQ. FT./HR.

TTV 678	26"	30"	34"
Working Capacity (sq. ft./hr.)	49,192	56,760	64,328

## One Size Fits All



### MODEL

### TTV 678

Cleaning Path	26", 30", 34"	Maximum Gradient	11°
Pad or Brush Size	3" x 12"	Working Speed	0.3–4.3 mph
Solution/Recovery Tank	32 gal.	Vacuum Motor Power	24V, 400W
Chemical Capacity	1 gal.	Noise Level dB(A)	69 dB(A)
Chemical Mixture Rates	32:1, 64:1, 96:1, 128:1	Working Capacity (sq. ft./hr.)	49,192–64,328
Water Flow Rate	0.25, 0.5, 0.8, 1.0 gpm	Run Time	4 hrs.
Brush Pressure	160 lbs. max	Batteries (Gel)	6 x 12V, 100 Ahr.
Brush Speed	125–200 rpm	Weight (Including Batteries)	1,100 lbs.
Brush Motor	3 x 24V, 400W	Dimensions (LxWxH)	66" x 26" x 56"
Traction Motor	600W		



# TTB 3226

## Twintec Battery Scrubbers TTB 3226 Ride-on Scrubber

With 32 gallon tanks and 26" scrubbing width the 3226 fits through any door and can handle any job large or small. It is fully featured and provides the operator with maintenance-free gel batteries and extended run time.



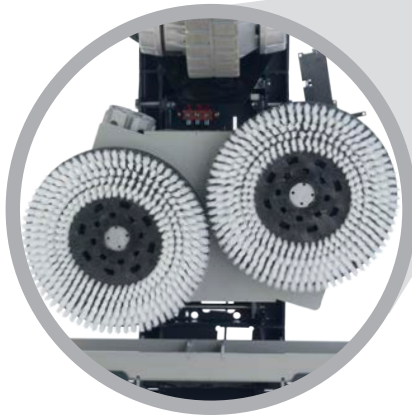
### Key Features

- Standard equipment includes 4 x 100 ah gel batteries
- 3.5 hour run time from a single charge
- Adjustable brush pressure
- 600 watt traction motor drives at speeds up to 4.3 mph
- Adjustable water flow from 0.25 to 1 gpm with the push of a button
- Large 32 gallon capacity and 26" scrub width
- Patented pop on/off brushes and pads makes for easy changes
- Simplified operator control panel for easier use
- LED control panel continuously provides operator with water flow, brush pressure and battery status
- Will accept optional off aisle kit that can be stored on the machine
- Tear-away squeegee equipped with quick-release Linatex squeegee blades for easy cleaning
- 70" turning radius allows for cleaning in tight aisles
- Durable rotomolded polyethylene tanks carry a 10 year warranty
- Gel batteries are completely maintenance free, emit 1/40 of the hydrogen gas of wet lead acid batteries, are spill-proof and can be charged anywhere. The safest, most dependable and longest-life batteries on the market
- The "Low" mode allows for reduced noise level and extended run-time





*Simplified operator control panel for easier use*



*Patented pop on/off brushes and pads*



## MODEL

## TTB 3226

Cleaning Path	26"	Working Speed	0.3–4.3 mph
Pad or Brush Size	2 x 13"	Vacuum Motor Power	24V, 400W
Solution/Recovery Tank	32 gal.	Noise Level dB(A)	69 / 67 dB(A)
Water Flow Rate	0.25, 0.5, 0.8, 1.0 gpm	Working Capacity (sq. ft./hr.)	49,192
Brush Pressure	120 lbs. max	Run Time	3.5 hrs.
Brush Speed	200 rpm	Batteries (Gel)	4 x 12V, 100 Ahr.
Brush Motor	2 x 24V, 400W	Weight (Including Batteries)	950 lbs.
Traction Motor	600W	Dimensions (LxWxH)	66" x 26" x 56"
Maximum Gradient	9°		

# TTV 5565

## Vario Battery Scrubbers TTV 4555 and TTV 5565 Traction Drive Scrubbers

The TTV 4555 and 5565 are the next generation in walk behind auto-scrubbers. With the 4555 offering a choice between 17" or 20" scrub widths while the 5565 adjusts from 22" to 26", all without tools, there simply isn't a more advanced pair of scrubbers on the market today.

Both units offer traction drive, an onboard chemical dilution system that provides precise chemical metering without the need for mixing and adjustable solution flow rates from 0.25 to 1 gpm, ensuring the proper amount of water and chemical are used at all times.

### Key Features

- Both units offer two sizes in one machine without the need for tools
- 16- and 22-gallon tanks provide the capacity needed for large jobs
- Traction drive motor moves them at speeds up to 4.3 mph
- Fully adjustable flow rate from 0.25 gpm to 1 gpm ensures correct amount of water is used
- Onboard chemical dispensing system allows for 32:1, 64:1, 96:1 and 128:1, guaranteeing proper chemical usage
- 5565 features patented pop-on/pop-off brushes and pad drivers while both offer adjustable brush pressure
- LED control panel continuously provides operator with chemical, vacuum, water flow, brush pressure and battery status
- Tear-away squeegees equipped with quick-release squeegee blades for easy cleaning
- Maintenance-free gel batteries provide 3–3.5 hours of run time on the 4555 and over 3.5 hours on the 5565
- low-voltage shutoff prolongs battery life
- The gel batteries emit 1/40 of the hydrogen gas of wet lead acid batteries, are spillproof and can be charged anywhere
- The safest, most dependable and longest-life batteries on the market
- Will accept available, optional off aisle kit
- The "Low" mode allows for reduced noise level and extended run-time



TTV 5565

*The brushes are adjustable from 22" to 26" with no tools required*



# TTV 4555

Easy to use control panel makes for simple operation of the machine



Easy access to battery compartment and onboard chemical dilution system



TTV 4555

## MODEL

## TTV 5565/4555

Cleaning Path

22", 26" / 17", 20"

Pad or Brush Size

2" x 11", 2" x 13" / 17", 20"

Solution/Recovery Tank

22.5 gal. / 16 gal.

Chemical Capacity

1 gal.

Chemical Mixture Rates

32:1, 64:1, 96:1, 128:1

Water Flow Rate

0.25, 0.5, 0.8, 1.0 gpm

Brush Pressure

120 lbs. max / 90 lbs.

Brush Speed

200 rpm

Brush Motor

2 x 24V, 400W / 1 x 24V, 400W

Traction Motor

600W / 250W

Maximum Gradient

11°

Working Speed

0.3–4.3 mph

Vacuum Motor Power

24V, 600W / 24V, 400W

Noise Level dB(A)

68 / 65 dB(A)

Working Capacity (sq. ft./hr.)

28,600 / 24,200

Run Time

3.5 hrs. / 3–3.5 hrs.

Batteries (Gel)

4 x 100 Ah. / 2 x 100 Ah.

Weight (Including Batteries)

632 lbs. / 492 lbs.

Dimensions (LxWxH)

55" x 27" x 45" / 57" x 22" x 45"

# TTB 1620

## Twintec Battery Scrubbers TTB 1620 Pad Assist and 1620T Traction Drive Scrubbers

The TTB 1620 and 1620T (traction drive) are large-capacity 20" scrubbers built for the most demanding user. They both offer adjustable solution flow rates to ensure the proper amount of water is used while the control panel continuously monitors critical operating levels.

### Key Features

- 16-gallon solution and recovery tanks
- Fully adjustable flow rate from 0.25 gpm to 1 gpm
- 250-watt traction drive motor moves the 1620T at speeds up to 4.3 mph
- LED control panel continuously provides operator with vacuum, water flow, brush pressure and battery status
- Semi-parabolic squeegee with Linatex blades pivots from side to side providing excellent water recovery
- Tear-away squeegee equipped with quick-release squeegee blades for easy cleaning
- Onboard charger and 2 x 100 amp hour gel batteries provide 3–3.5 hours of run time
- Low-voltage shutoff prolongs battery life
- The "Low" mode allows for reduced noise level and extended run-time
- The gel batteries are completely maintenance free, emit 1/40 of the hydrogen gas of wet lead acid batteries, are spill-proof and can be charged anywhere. The safest, most dependable and longest-life batteries on the market



TTB 1620



*TTB1620 control panel monitors the status of the batteries, brush pressure and water flow*



# TTB I 620T



Quick-fill hose allows you to fill the unit from a tap instead of using buckets



TTB I 620T control panel monitors the status of the batteries, brush pressure and water flow



TTB I 620T



Easy to view solution level



Squeegee blades can be changed without tools simply by pulling out the pins

## MODEL

## TTB I 620/I 620T

Cleaning Path	20"	Working Speed (T)	0.3–4.3 mph
Pad or Brush Size	20"	Vacuum Motor Power	24V, 400W
Solution/Recovery Tank	16 gal.	Noise Level dB(A)	68 / 65 dB(A)
Water Flow Rates	.25–1 gpm	Working Capacity (sq. ft./hr.)	22,000 / 22,000
Brush Pressure	90 lbs. max	Run Time	3–3.5 hrs.
Brush Speed	150 rpm	Batteries (Gel)	2 x 100 Ah.
Brush Motor	24V, 400W	Weight (Including Batteries)	393 lbs. / 424 lbs.
Traction Motor (T)	24V, 250W	Dimensions (LxWxH)	57" x 22" x 43"
Max Gradient (T)	11°		

# TTB 1117

## Twintec Battery Scrubbers TTB 1117 and TTB 1120 Pad Assist Walk Behind Scrubbers

With 11-gallon solution and recovery tanks, these 17" and 20" walk behind scrubbers are compact and so easy to use anyone can operate them.

### Key Features

- Fully adjustable handle provides proper ergonomics for any operator
- Semi-parabolic tear-away squeegee with Linatex blades pivots from side to side providing excellent water recovery on turns
- Tear-away squeegee equipped with quick-release squeegee blades for easy cleaning
- Patented flip-up head makes pad or brush changing a breeze
- Stainless steel frame will never rust and the structural foam brush deck carries a 10-year warranty
- LED control panel continuously provides operator with vacuum, water and battery status
- Onboard charger and 2 x 100 amp hour gel batteries provide 3–3.5 hours of run time and can be charged anywhere
- Low-voltage shutoff prolongs battery life
- The "Low" mode allows for reduced noise level and extended run-time
- The gel batteries are completely maintenance free, emit 1/40 of the hydrogen gas of wet lead acid batteries, are spill-proof and can be charged anywhere. The safest, most dependable and longest-life batteries on the market



TTB 1117



*Patented flip-up head  
for easy pad changes*



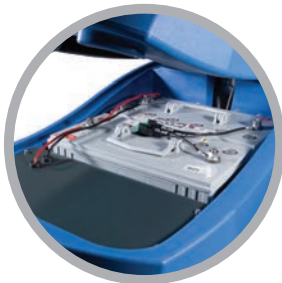
# TTB 1120



*Inline filter captures debris*



*Quick-fill hose allows you to fill from a tap instead of using buckets*



*Maintenance-free gel batteries are standard*



*Control panel monitors vacuum, water flow and batteries*



**TTB 1120**

## MODEL

## TTB 1117/1120

**Cleaning Path**

17" / 20"

**Pad or Brush Size**

17" / 20"

**Solution/Recovery Tank**

11 gal.

**Brush Pressure**

72 lbs. / 75 lbs.

**Brush Speed**

150 rpm

**Brush Motor**

24V, 400W

**Vacuum Motor Power**

24V, 400W

**Noise Level dB(A)**

69 / 67 dB(A)

**Working Capacity (sq. ft./hr.)**

18,700 / 22,000

**Run Time**

3-3.5 hrs.

**Batteries (Gel)**

2 x 100 Ah.

**Weight (With Batteries)**

268 lbs. / 277 lbs.

**Dimensions (LxWxH)**

44" x 18" x 43" / 44" x 22" x 43"

# ETB 1120

## Twintec Battery Scrubbers ETB 1120 Pad Assist Walk Behind Scrubbers

This compact and easy to handle 20" scrubber with 11 gallon tanks can clean up to 22,000 sq. ft./hr.

### Key Features

- Adjustable handle provides proper ergonomics for any operator
- LED control panel continuously provides the operator with vacuum, water flow, brush pressure and battery information
- The semi parabolic squeegee with polyurethane blades pivots from side to side providing excellent water recovery even on turns
- Epoxy coated steel chassis
- Squeegee blades can be removed easily for cleaning
- Pad or brush changing is a breeze with the patented flip-up head
- 100 amp hour lead acid batteries (not included) provide 2.5 -3.5 hours of run time
- Low voltage shut off prolongs battery life
- The "Low" mode allows for reduced noise level and extended run-time



Batteries not included

ETB 1120

MODEL	ETB 1120		
Cleaning Path	20"	Noise Level dB(A)	69 / 67 dB(A)
Pad or Brush Size	20"	Working Capacity (sq. ft./hr.)	22,000
Solution/Recovery Tank	11 gal.	Run Time	3-3.5 hrs.
Brush Pressure	75 lbs.	Batteries	2 x 12v (not included)
Brush Speed	150 rpm	Weight (With Batteries)	277 lbs.
Brush Motor	24V, 400W	Dimensions (LxWxH)	44" x 22" x 43"
Vacuum Motor Power	24V, 400W		



# TT 1117/1120



TT 1117



TT 1120

## Twintec Electric Pad Assist Walk Behind Scrubbers

So compact and easy to use that anyone can use them while they break down into pieces for simple transport from one location to another. They truly are economic, cost-effective replacements for the bucket and mop!

### Key Features

- Fully adjustable handle ensures operator comfort
- Pad pressure is sufficient enough for both scrubbing and stripping
- With 100" water lift and 95 cfm of airflow, it will dry your floors like nothing else while the semi-parabolic squeegee pivots to ensure excellent water recovery on turns and can be easily removed for cleaning
- Entire unit can be broken down into sections for manual transport up and down stairs or from job to job
- Patented flip-up head makes changing brushes or pads a breeze
- Stainless steel chassis will never rust
- Brush deck is durable and carries a 10-year warranty



### MODEL

Cleaning Path

Pad or Brush Size

Solution/Recovery Tank

Brush Pressure

Brush Speed

Brush Motor

Vacuum Motor Power

### TT 1117/1120

17" / 20"

17" / 20"

11 gal.

105 lbs.

180 rpm

1,000W

1,200W

Noise Level dB(A)

Power Cord

Working Capacity (sq. ft./hr.)

Weight

Dimensions (LxWxH)

69 / 67 dB(A)

65'

18,700 / 22,000

140 lbs. / 150 lbs.

44" x 18" x 43" / 44" x 22" x 43"

# TTB 516 / TT 516

## Twintec Battery Compact Scrubbers TTB 516 Pad Assist Scrubber

With 45–60 minutes of run time an interchangeable battery pack and 5-gallon solution capacity, the TTB 516 is the professional choice in compact auto-scrubbers. It gets into all those tight areas that other auto-scrubbers cannot. Essentially, it is a complete replacement for a mop and bucket system for so many reasons.

### Key Features

- Pivoting squeegee coupled with a 300-watt/0.4 hp vacuum motor provides excellent water recovery
- Recovery tank has a drain allowing for easy draining without the need for lifting
- Control panel provides operator with water, vacuum and battery status all in one convenient place
- The battery pack consists of a 1 x 24 volt 18 amp hour environmentally preferred gel battery that charges in under 5 hours. It is completely maintenance free, emits 1/40 of the hydrogen gas of wet lead acid batteries, is spill-proof and can be charged anywhere
- Fits into the trunk of a car
- The total machine weight to lift is only 85 lbs.
- The “Low” mode allows for reduced noise level and extended run-time



TTB 516



Environmentally preferred gel battery (30 lbs.) easily removed for transport



Easy to use control panel makes for simple operation of the machine

Forward tilting handle for easy storage



### MODEL

### TTB 516 / TT 516

Cleaning Path	16"	Noise Level dB(A)	69 / 67 dB(A) / 67 dB(A)
Pad or Brush Size	14" / 16"	Working Capacity (sq. ft./hr.)	17,600
Solution/Recovery Tank	5 gal.	Run Time	45–60 min. / NA
Brush Pressure	55 lbs.	Batteries (Gel)	1 x 24V, 18 Ah.
Brush Speed	200 rpm / 150 rpm	Power Cord	65 ft.
Brush Motor	400W	Weight (*With Batteries)	*115 lbs. / 85 lbs
Vacuum Motor Power	300W / 400W	Dimensions (LxWxH)	18" x 18" x 33.5"

## TT 516



### Twintec Electric Pad Assist Walk Behind Scrubbers

The TT 516 is the professional choice in compact auto-scrubbers. It gets into all those tight areas that other auto-scrubbers cannot. Essentially, it is a complete replacement for a mop and bucket system for so many reasons.



*Pad / brush changes  
are made easy with  
the tip back design*

### Key Features

- Fully adjustable handle ensures operator comfort
- Pivoting squeegee coupled with a 300 watt/0.4 hp vacuum motor provides excellent water recovery
- Powerful 400 watt/0.5 hp brush motor provides 55 lbs. of pressure at 150 rpm. for excellent cleaning performance
- Recovery tank has a drain allowing for easy emptying without the need for lifting
- Simple control panel for easy operation
- Lightweight at 85 lbs. and it fits into the trunk of a car
- 65' power cord for increased productivity and ease of use

# DP 340/420

## Duplex Multi-Surface Floor Cleaner

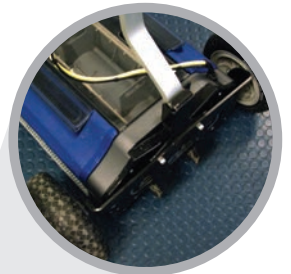
From wall to wall and into the tightest corners, the Duplex can be used in restoration or as an integral part of your daily maintenance program. Clean virtually any floor surface. Carpet, grouted ceramic, rubberized floors and even escalators are no obstacles for the Duplex.

### Key Features

- Simply fill the solution tanks and squeeze the trigger to feed cleaning solution onto the twin counter-rotating brushes
- Conveyors recover the dirty water, depositing it in the central recovery tank or you can choose to double scrub the area and pick up the water later
- Brushes and drive unit are offset so they work right to the edge of the machine and into difficult areas
- The Duplex's remarkable performance is the result of its unique 800,000-bristle design. Its brushes, counter-rotating at 780 rpm, actively lift dirt, water and grime from the floor surface, replacing mops, buckets, scrubbers and wet vacuums
- Brush options include two grades of black brushes for regular or aggressive scrubbing. Grey is the standard all-purpose brush; yellow for sensitive carpet areas
- Counter rotating brushes lift pile as required by carpet manufacturers



DP 340



Duplex transportation trolley



DP 420



Optional escalator kit for the DP 420

Model	DP 340	DP 420
Cleaning Path	11"	14"
Solution Tank	1.1 gal.	1.6 gal.
Recovery Capacity	0.75 gal.	1 gal.
Brush Speed	780 rpm	780 rpm
Brush Pressure	48 lbs.	57 lbs.
Brush Motor	1,000W / 1.3 hp	1,000W / 1.3 hp
Power Cord	35 ft.	35 ft.
Weight	48 lbs.	57 lbs.
Working Capacity (sq. ft./hr.)	4,840	6,160



Profiled Rubber and Ceramic



Carpet



Escalator



## TTB 817C/TTQ 815



TTB 817C



TTQ 815

### Twintec Cylindrical Scrubbers TTB 817C Brush Assist and TTQ 815

When a cylindrical unit is needed, the TTB 817 C and TTQ 815 with Tynex Grit Brushes can handle the toughest jobs. The 817 has a semi-parabolic squeegee that provides excellent water recovery on grouted surfaces while the 815 with blades on each side of the brush is perfect for the multidirectional operation required when cleaning narrow aisles. The fully adjustable handle provides proper ergonomics for any operator.

#### Key Features of the TTB 817

- LED control panel provides the status of the vacuum, water flow and batteries
- The gel batteries provide 2.5–3.5 hours of run time while the low-voltage shutoff prolongs their life
- The batteries are maintenance free, spillproof and can be charged anywhere, The safest, most dependable and longest-life batteries on the market

#### Key Features of the TTQ 815

- Whether operating forwards or backwards, there is no loss in scrubbing or pick-up performance
- The pump feeds cleaning solution onto the brushes ensuring consistent water flow and easy to reach on/off water switch allows for double scrubbing when required
- Large rear wheels make transport a breeze and the handle folds for easy transport and storage
- 65-foot power cord

MODEL	TTB 817/ TTQ 815		
Cleaning Path	17" / 15"	Noise Level dB(A)	69 dB(A)
Pad or Brush Size	17" / 15"	Cord Length (TTQ 815)	65 ft.
Solution/Recovery Tank	8 gal.	Working Capacity (sq. ft./hr.)	14,960 / 12,739
Brush Pressure	30 lbs. / 27 lbs.	Run Time (817C)	3–3.5 hrs. / NA
Brush Speed	1,000 rpm / 1,200 rpm	Batteries (Gel) (817C)	2 x 100 Ah. / NA
Brush Motor	400W-0.5 hp	Weight (With Batteries)	268 lbs. / 90 lbs.
Vacuum Motor Power	400W-0.5 hp / 1,200W-1.6 hp	Dimensions (LxWxH)	45" x 32" x 40" / 29" x 18" x 29"



# FLOOR MACHINES



*With a profile of only 7.5", it can go places no other machine can*



*The handy solution tank (standard) turns the 316 into a portable cleaning system. See how easily it folds for shipping and storage*



*Compact folding for easy shipping and storage*



LL 316

## LL 316 Key Features

With a 13" deck, 200 rpm motor and weight of only 40 pounds, the LL 316 is compact and easy to transport, yet powerful enough to handle just about any job. The fold-down handle makes storage a nonissue.

### MODEL

### LL 316

Brush Motor

0.5 hp

Weight

40 lbs.

Power Cord

50 ft.

Voltage

115V, 60hz

Pad Size

13"

Speed

200 rpm

Tank Capacity

1 gal. (included)

# FLOOR MACHINES



NA 17/20

## NA 17 and 20 Key Features

All steel construction and dual planetary steel gears make these units tough enough for the heaviest of jobs. *(shown with optional shampoo tank)*



NA 20 DS

## NA 20 DS Key Features

All steel construction, a 1.5 hp DC rectified motor and dual planetary gears make this unit a real workhorse. It has the option of running at 175 rpm or 300 rpm, providing greater versatility in use.



NA 1520/I520 DC

## NA 1520/I520 DC/ NA 2020 Key Features

All steel construction and 1.5 hp DC rectified motor ensure these units can handle the toughest of jobs. Multi-grooved drive belts provide efficient power transfer. Our dust control (DC) model has a unique filter system that is easily cleaned and changed.

### NA 17/20

1.5 hp, AC  
91 lbs. / 96 lbs.  
50 ft.  
115V, 60hz  
17" / 20"  
175 rpm  
4 gal. (optional)

### NA 20 DS

1.5 hp, DC Rectified  
108 lbs.  
50 ft.  
115V, 60hz  
20"  
175 / 300 rpm  
4 gal. (optional)

### NA 1520/I520 DC / NA 2020

1.5 hp, DC Rectified  
112 lbs.  
50 ft.  
115V, 60hz  
20" (19" for 1520 DC)  
1500 / 1500 / 2000 rpm  
NA

# GEL BATTERIES

## Gel Batteries

NaceCare uses 100% gelled electrolyte batteries in all our scrubbers; they're totally maintenance-free with no terminal corrosion ever. There is no risk of acid spilling due to improper maintenance or handling and no emergency spill kit is needed. With the self-diagnostic onboard charging system, they can be charged anywhere and are completely explosion-proof, making them the safest battery available anywhere.

## Key Features

- Both economically and environmentally safer to use
- Completely spillproof with no emergency spill kit or safety goggles required
- Acid will not leak if they are damaged since the internal liquid is a thixotropic paste (solid gel) when charging
- Considered nonhazardous materials to transport and are completely explosion-proof
- Guaranteed longer life than wet batteries and easier to dispose of
- Can be charged without special ventilation because they give off 1/40 the hydrogen of wet batteries when charging
- Maintenance-free with no terminal corrosion ever

## GEL BATTERIES VS. AGM AND FLOODED BATTERIES

GEL	AGM	FLOODED
<b>Advantages</b> <ul style="list-style-type: none"> <li>• Air transportable</li> <li>• 1/40 of the off gassing of a wet battery when charging</li> <li>• Low self-discharge</li> <li>• No corrosion on terminals</li> <li>• Can be charged anywhere</li> <li>• Longer life than AGM and flooded lead acid batteries</li> <li>• Spillproof</li> </ul> <b>Disadvantages</b> <ul style="list-style-type: none"> <li>• Higher price</li> </ul>	<b>Advantages</b> <ul style="list-style-type: none"> <li>• Maintenance free</li> <li>• Lower initial cost</li> <li>• Low self-discharge</li> <li>• No corrosion on terminals</li> <li>• Spillproof</li> </ul> <b>Disadvantages</b> <ul style="list-style-type: none"> <li>• Short life cycle with a deep discharge</li> <li>• Less run time than gel</li> <li>• Not made for use with automatic floor scrubbers</li> </ul>	<b>Advantages</b> <ul style="list-style-type: none"> <li>• Low initial cost</li> <li>• Replacements easily available</li> <li>• Reasonable life with max discharge</li> </ul> <b>Disadvantages</b> <ul style="list-style-type: none"> <li>• Spillable</li> <li>• Hazardous</li> <li>• Maintenance intensive</li> <li>• Must be charged in a ventilated area</li> <li>• Fewer shipping options</li> <li>• High self-discharge rate</li> <li>• Cannot be installed near sensitive electronic equipment</li> <li>• Requires staff training for hazardous material</li> </ul>

## LIFE CYCLE VS. DEPTH OF DISCHARGE (DOD)

Depth of Discharge	GEL	AGM	FLOODED
80%	600+ Cycles	250 Cycles	300 Cycles <i>(When properly maintained)</i>

The chart above shows the typical life cycle of both gel and AGM batteries at 80% depth of discharge. Although gel batteries have a higher initial cost, the life span is 2.25 times greater than an AGM battery.



1205 Britannia Road East,  
Mississauga, Ontario, L4W 1C7  
1.800.387.3210 TOLL-FREE  
1.800.709.2896 FAX  
[www.nacecare.com](http://www.nacecare.com)



# CARTS AND MOPPING SYSTEMS



  
**NACECARE™**  
SOLUTIONS  
*Clarity in Cleaning*



# CHARGING BUCKET SYSTEM

## Pre-charged Cleaning System

This system uses modern cleaning tools and microfiber textiles configured to enhance cleaning. Traditional spray-and-wipe cleaning causes workers to inhale atomized chemicals and may have a negative impact on indoor air quality for building occupants. Purchasing trigger sprayer bottles, affixing instruction labels and managing regulatory compliance can also be cumbersome and costly. This is a cost-effective alternative to improve this process. A color-coded bucket system with lids allows workers to use pre-moistened microfiber cloths for above-the-floor cleaning. The worker inserts 15, 25 or 40 cloths into the bucket and adds the proper amount of diluted chemical. The cloths absorb the chemical and become pre-moistened for cleaning all types of horizontal and vertical surfaces.

## Pre-charged Flat Mop System

The traditional mop-and-bucket approach to cleaning floors not only causes cross-contamination, but it also increases water usage and labor inefficiencies related to unnecessary travel time to water closets. Using inefficient string mops leads to soil buildup, unsightly appearance issues and unpleasant odors.

With the NaceCare pre-charged flat mop system, 10 - 12 microfiber flat mops are inserted into a durable, injection molded bucket with a lid. The worker adds chemical to the bucket, snapping the lid to make it watertight.



## Pre-charged Cleaning System Benefits

- Decreased cross-contamination
- Reduced water and chemical usage
- Reduced worker exposure and injuries
- Increased productivity
- Enhanced floor safety
- Reduced capital expenditure and replacement cost
- Meet green cleaning requirements
- Improved Indoor Air Quality
- Simplified training



# MID MOP MOPPING SYSTEM

## MidMop - A Class All its Own

### The System Supports Both String Mops and Flat Mops

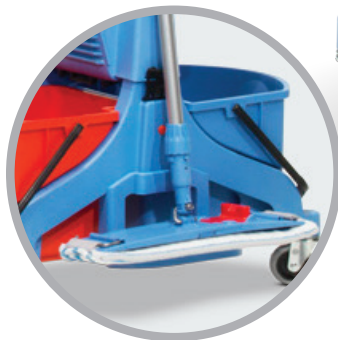
- Its compact design allows for easy storage while providing a go anywhere dual bucket mopping system
- The patented wringer is positioned high on the trolley providing better ergonomics and full access to both buckets at all times
- The MidMop permits a true twin bucket system to be followed or the wringer can be easily moved from one side to the other should both buckets be needed
- Total flexibility - it can be used in place on the NPT 1606 or attached to the NC 3000 and 4000 using an optional bracket
- Structural foam construction ensures maximum durability
- Easily removed 4 gallon buckets allow for simple filling and emptying
- Options include a flat mop stand and a versatile 5 quart swing bucket!



*Shown with optional mop stand and mop*



*Optional swing bucket*



*Optional mop stand*



*Patented water discharge diverter*



*Accepts up to a 24 ounce string mop*



*Accepts folding flat mops*

# THE “ONE CART” SYSTEM

## The NPT 1606 is a Versatile Compact Cart to Suit Any Need

- Modular design means one cart is all you'll ever need
- Uses include offices, rest rooms and general cleaning
- Total flexibility - all the options can be moved between carts as your needs change
- It supports your recycling program
- Fully color coded system accommodates charging buckets for mops and cloths
- Structural foam construction ensures maximum durability
- Easy-glide locking drawers and optional locking top cabinet
- The optional MidMop provides a divided dual bucket system that can be used in place or removed
- The design allows the MidMop to be swapped out for a second 30 gallon waste bag
- Optional Mopmatic system for effective pre-charging of mops



*Optional second 30 gallon waste bag*



*Dimensions (LxWxH): 47" x 23" x 42"*

### NPT 1606

#### Comes standard with:

- 1 x 30 gallon on-board waste
  - 1 x blue locking drawer
- 4 x 5 quart buckets (for under round top)
- Optional 2 x 10 quart buckets also available

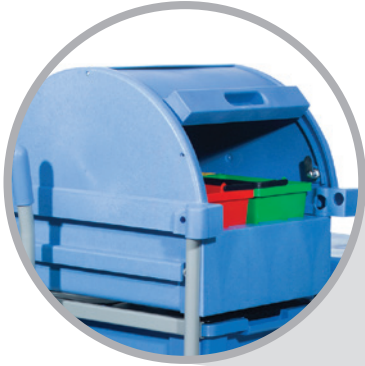


*Optional Mopmatic pre-charging system*



# THE "ONE CART" SYSTEM

*Optional locking round top*



*Optional second locking drawer*



*Optional removable MidMop system*

- Above configuration is for reference only.
- Base cart only is shown on the previous page.



# À LA CARTE PROGRAM

## NC 3000 & NC 4000 Features

- Carts are structural foam with corner bumpers, removable/washable trays and non-marking 5" ball-bearing castors.
- Both units are **JCAHO COMPLIANT**: Locking cabinet doors and waste cover.
- Locks are a standard feature.
- The **NC 3000** includes 3 removable trays and a pedal-activated, enclosed 30 gallon waste container.
- The **NC 4000** has 3 removable trays and 1 shelf for maximum storage.

## MID MOP - DETACHABLE MOPPING SYSTEM

- The MidMop accepts both folding flat mops and string mops up to 24 ounces.
- Twin buckets reduce cross-contamination, ensuring the clean water remains clean longer.
- The MidMop can be used as a true twin bucket system or for additional water capacity the wringer can be moved from one side to the other allowing both buckets to be used for clean water.
- Total flexibility - it can be attached to the NC3000 and 4000 using an optional bracket.

## MOPMATIC

- Attached directly to the cart, Mopmatic features a unique mop preparation system which provides a constant supply of clean, uniformly moistened mops or microfiber cloths.
- The blue bucket stores the clean, pre-moistened mops while the red bucket stores the dirty ones.

## DETACHABLE AND MOUNTED WASTE SYSTEMS

- They come with a zippered vinyl waste bag, allowing for easy waste removal without lifting.
- The **NCK 400** can be detached from the cart where required.



Dimensions (LxWxH): 36" x 26" x 42"

### NC 3000

- Cart includes 3 x 4-quart buckets  
Optional 2 x 6-quart buckets  
Optional 8" castor kit



Dimensions (LxWxH): 36" x 26" x 42"

### NC 4000

- Cart includes 3 x 4-quart buckets  
Optional buckets for Small tray - 2 x 6-quart  
Optional buckets for Large tray - 4 x 5-quart (under Round Top) or 2 x 10-quart  
Optional 8" castor kit

*The À LA CARTE PROGRAM from NaceCare allows you to custom build our carts to suit your specific needs. Simply choose your base, and then add on your kit and accessories.*

**JCAHO COMPLIANT** UNDER STANDARDS EC.1.20, IC.3.10, IC.1.10, EC.4.10

## À LA CARTE KITS



### MIDMOP / ROUND TOP

- 629837 - MidMop mopping system
- 900540 - MidMop connector bracket
- 900553 - Locking round top



### NCK 700

- 629569 - 3-bucket MopMatic pre-charging system



### NCK 400

- 759124 - 2 x 30-gallon removable waste module



### NCK 500

- 629639 - 30-gallon on-board collapsible waste module

# SYSTEM ACCESSORIES



## 4-Quart Buckets

WITH LIDS	WITHOUT LIDS
629760 - Red	629532 - Red
629761 - Blue	629533 - Blue
629763 - Green	629534 - Green
629762 - Yellow	629535 - Yellow



## 6-Quart Buckets

WITH LIDS	WITHOUT LIDS
629181 - Red	628183 - Red
629182 - Blue	628184 - Blue
629183 - Green	627909 - Green
629184 - Yellow	627910 - Yellow



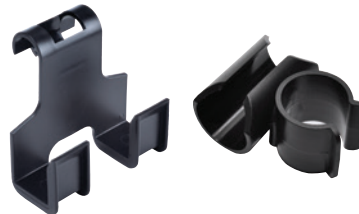
## 5-Quart Buckets

WITHOUT LIDS
628773 - Red
628774 - Blue
629011 - Green
629012 - Yellow



## 10-Quart Buckets With Lids

WITH LIDS	WITHOUT LIDS
629177 - Red	628011 - Red
629178 - Blue	628012 - Blue
629179 - Green	628013 - Green
629180 - Yellow	628014 - Yellow



## Clamp on Nooks

628277 - Clamp 25mm (1")  
 628276 - Clamp 32mm (1 1/4")  
 628378 - Wet floor sign hook



## Hanging Nooks

229451 - Nook 22mm (3/4")  
 229450 - Nook 25mm (1")  
 229449 - Nook 32mm (1 1/4")



## Pocket Mop

8020059 - Pocket mop  
 (Includes 1 looped mop head)



## Folding Flat Mop

8020060 - Folding flat mop  
 (Includes 1 looped mop head)



## Velcro Flat Mop

8020063 - Velcro flat mop  
 (Includes 1 looped mop head)



# ULTRA COMPACT RIDER SCRUBBER INTRODUCING THE TTB 2120



  
**NACECARE™**  
SOLUTIONS  
*Clarity in Cleaning*



# TTB 2120

## Compact and effective

The TTB 2120 provides the maneuverability of a walk-behind with the productivity of a ride-on. The 21 gallon tanks mean fewer refills and higher productivity when compared to similar models. With 2 gel battery options available, the TTB 2120 provides up to 3.5 hours of run-time from a single charge. The on-board charger allows it to be charged anywhere. Because of its compact design it can be stored in the same closet as a walk-behind.

### Features

- 20" cleaning path
- 21 gallon capacity
- Up to 3.5 hours of run-time (with 120Ahr. batteries)
- 52 lbs. of pad pressure
- Cleans up to 30,000 sq. ft / hr.
- 2 gel battery options available (2 x 100Ahr. or 2 x 120Ahr.)
- Plug in anywhere with the on-board charger
- Stores in the same closet as a walk-behind
- Stainless steel chassis
- The rear wheel drive system ensures greater ramp climbing ability up to 11 percent
- Quiet at only 70 dB(A)
- Backed by our comprehensive 10/2/2 warranty



QUIET Technology



TIME Saver



BATTERY Technology



### MODEL

### TTB 2120

Cleaning Path

20"

Pad or Brush Size

20"

Solution/Recovery Tank

21 gal.

Brush Pressure

52 lbs. max

Brush Motor

1 x 24V, 600W

Brush Speed

150 rpm

Traction Motor

400W

Maximum Gradient

11% (6 Degrees)

Working Speed

0.3–3.7 mph

Vacuum Motor Power

24V, 400W

Noise Level

70 dB(A)

Working Capacity (sq. ft./hr.)

30,000

Run Time

2.5 hrs. / 3.5 hrs.

Batteries (Gel)

2 x 12V, 100 Ahr. or 120 Ahr.

Weight (Without Batteries)

450 lbs.

Dimensions (LxWxH)

57" x 22" x 45"



*2 gel battery options available*



*Stainless steel chassis*



*Intuitive control panel*



*Easy fill tank*

# GEL BATTERIES

## Gel Batteries

NaceCare uses 100% gelled electrolyte batteries in all our scrubbers; they're totally maintenance-free with no terminal corrosion ever. There is no risk of acid spilling due to improper maintenance or handling and no emergency spill kit is needed. With the self-diagnostic on-board charging system, they can be charged anywhere and are completely explosion-proof, making them the safest battery available anywhere.

## Key Features

- Both economically and environmentally safer to use
- Completely spill-proof with no emergency spill kit or safety goggles required
- Acid will not leak if they are damaged since the internal liquid is a thixotropic paste (solid gel)
- Considered non hazardous materials to transport and are completely explosion-proof
- Guaranteed longer life than wet batteries and easier to dispose of
- Can be charged without special ventilation because they give off 1/40 the hydrogen of wet batteries when charging
- Maintenance-free with no terminal corrosion ever

## GEL BATTERIES VS. AGM AND FLOODED BATTERIES

GEL	AGM	FLOODED
<b>Advantages</b> <ul style="list-style-type: none"> <li>• Air transportable</li> <li>• 1/40 of the off gassing of a wet battery when charging</li> <li>• Low self-discharge</li> <li>• No corrosion on terminals</li> <li>• Can be charged anywhere</li> <li>• Longer life than AGM and flooded lead acid batteries</li> <li>• Spillproof</li> </ul>	<b>Advantages</b> <ul style="list-style-type: none"> <li>• Maintenance free</li> <li>• Lower initial cost</li> <li>• Low self-discharge</li> <li>• No corrosion on terminals</li> <li>• Spill-proof</li> </ul>	<b>Advantages</b> <ul style="list-style-type: none"> <li>• Low initial cost</li> <li>• Replacements easily available</li> <li>• Reasonable life with max discharge</li> </ul>
<b>Disadvantages</b> <ul style="list-style-type: none"> <li>• Higher price</li> </ul>	<b>Disadvantages</b> <ul style="list-style-type: none"> <li>• Short life cycle with a deep discharge</li> <li>• Less run time than gel</li> <li>• Not made for use with automatic floor scrubbers</li> </ul>	<b>Disadvantages</b> <ul style="list-style-type: none"> <li>• Spillable</li> <li>• Hazardous</li> <li>• Maintenance intensive</li> <li>• Must be charged in a ventilated area</li> <li>• Fewer shipping options</li> <li>• High self-discharge rate</li> <li>• Cannot be installed near sensitive electronic equipment</li> <li>• Requires staff training for hazardous material</li> </ul>

## LIFE CYCLE VS. DEPTH OF DISCHARGE (DOD)

Depth of Discharge	GEL	AGM	FLOODED
80%	600+ Cycles	250 Cycles	300 Cycles <small>(When properly maintained)</small>

The chart above shows the typical life cycle of both gel and AGM batteries at 80% depth of discharge. Although gel batteries have a higher initial cost, the life span is 2.25 times greater than an AGM battery.



1205 Britannia Road East,  
Mississauga, Ontario, L4W 1C7  
1.800.387.3210 TOLL-FREE  
1.800.709.2896 FAX  
[www.nacecare.com](http://www.nacecare.com)



# UPRIGHT VACUUM PROGRAM





# HD 14/18

## HD Upright Vacuums Quality. Performance. Durability.

Protecting your carpet investment requires a powerful and dependable vacuum, the HD 14 and HD 18 are versatile units with an on-board wand for detail work. Both units combine effortless handling, quiet operation and superior soil removal, they are lightweight and maneuverable with an ergonomic handle that ensures operator comfort.

Indicator lights signal when the bag is full, the brush height is correct or the brush chamber is clogged and for ease of use the stretch hose expands to four times its stored length. The electronic brush shut-off detects lodged debris in the brush roll chamber and automatically shuts down the brush motor protecting the belt, pulley, bearings and motor. The indicator light changes to red. Both units will not run without a bag.

At 66 dB(A) it exceeds industry standards for quiet vacuums reducing worker fatigue and disruption to building occupants. The four stage filtration system includes a top-fill bag, intake filter, and an exhaust filter. The optional HEPA filter provides 99.97% efficiency at 0.3 microns. Both units meet or exceed the standards required by LEED-EBOM and CIMS-GB and are approved by The Carpet and Rug Institute.



HD 14

MODEL	HD 14"	HD 18"
Vac Motor	1,000W	1,000W
Performance - Water Lift	118"	118"
Performance - Airflow	63 cfm	63 cfm
Brush Motor	200W	300W
Brush RPM	4,000 rpm	3,500 rpm
Capacity	6.5 quart	6.5 quart
Weight	16 lbs.	17 lbs.
Noise Level	66 dB(A)	66 dB(A)
Power Cord	50'	50'



HD 18



Illuminated on/off switch



On board vacuum wand



Four position height adjustment



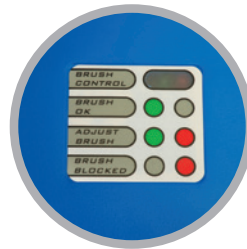
Quick change brush strip



Optional HEPA filter available



Top fill bag



Roller brush indicator light

## Key Features

- Four position brush height adjustment with indicator light
- Bag full indicator light
- Won't run without a bag installed
- Electronic brush shut-off protects motor if brush becomes jammed
- Upper body lays flat to the floor to get under beds and furniture
- Quick-change brush strip
- Four-stage filtration standard
- Optional HEPA filter available
- V belt for long life
- 4:1 stretch hose
- Easy bag installation
- Dual-motor performance
- Crevice tool standard
- Optional accessories include dusting brush and upholstery tool
- Carpet and Rug Institute Certified



NaceCare upright and canister vacuums meet the stringent certification requirements for the Carpet and Rug Institute (CRI).



QUIET Technology



TIME Saver



SOIL Removal



HEPA Filtration (Optional)

# HX 14

## HX Upright Vacuum Quality. Performance. Durability.

Protecting your carpet investment requires a powerful and dependable vacuum. The HX14 upright vacuum was designed from the ground up to be reliable, versatile and yet cost effective.

This dual motor unit boasts a 1000 watt vacuum motor providing 118" of water lift and 63 cfm of air flow. The brush roll turns at 4500 rpm and the flat belt is designed to exceed 500 hours of use.

The HX 14 is extremely light and easy to maneuver and lays flat on the floor to get underneath beds and furniture.

The 4 stage standard filtration helps improve indoor air quality and the bag full indicator informs the operator when to change the bag. To protect the motor it will not run without a bag.



**QUIET** Technology



**TIME** Saver



**SOIL** Removal



**HEPA** Filtration  
(Optional)



## Specifications

### HX 14

Vac Motor	1000 watt
Performance - Water Lift	118"
Performance - Airflow	63 CFM
Brush Motor	150 watt
Brush RPM	4500 RPM
Capacity	6.5 quart
Weight	13 lbs.
Noise Level	68 dBa.
Power Cord	50'

## Key Features

- Extremely light and easy to maneuver
- Bag full indicator
- Won't run without a bag installed
- Upper body lays flat to the floor to get under beds and furniture
- Four-stage filtration standard
- Flat belt that exceeds 500 hours of use
- 4:1 stretch hose
- Dual motor performance

[www.nacecare.com](http://www.nacecare.com)

1205 Britannia Road East  
Mississauga, Ontario, L4W 1C7  
1.800.387.3210 **TOLL-FREE** 1.800.709.2896 **FAX**





*Vacuums*



*Carts &  
Mopping  
Systems*



*Floor Care*

CARPET CARE SYSTEMS





# OVERVIEW

## Carpet Maintenance Overview

The starting point of any successful maintenance program is selecting quality products and systems that meet the performance and appearance requirements of your facility. Properly maintained carpet enhances a facility's appearance, improves indoor air quality and contributes to occupant satisfaction.

Proper maintenance also protects the capital investment by extending the carpet's life. The carpet mills and the Carpet & Rug Institute recommend three levels of cleaning activity with frequencies based on carpet type and traffic conditions. NaceCare is dedicated to providing the most cost-effective solutions for maintaining your carpet and the image of your facility.



### Daily Maintenance

#### Vacuum and Spot Removal

The single most effective and economical way to extend carpet life is daily vacuuming. It removes 90 percent of all dry and abrasive soil. Daily visual inspection also ensures spots are removed before they become stains.

### Restorative Maintenance

#### Hot Water Extraction (HWE)

Deep cleaning removes embedded dry soil, oily substances and any residue build-up that can damage fibers and reduce carpet life. The carpet's appearance is restored by injecting water into the fibers, agitating them to loosen soil and extracting the soiled solution into a recovery tank. Pre-spray and extraction solution used should contain sustainable formulas with a pH factor under 9.

### Interim Maintenance

#### Encapsulation and Traffic Spotting

An effective program always includes pre-established cleaning frequencies with the goal of maintaining the highest possible level of appearance at the lowest overall cost between wet-extraction cleanings.

Low-moisture encapsulation is carpet mill recommended since it combines pile-lifting and interim cleaning into a single step, saving time and labor. A brush assisted walk behind or twin cylindrical brush machine performs both applications with carpets drying in 30-60 minutes.



## Upright HD 14

Lightweight and durable, the HD 14/18 combines dual-motor performance and optional HEPA filtration, making it the best option for daily carpet maintenance. The ergonomic design and lightweight construction ensure it is easy to maneuver and an ideal choice for building service contractors and in-house cleaning professionals. The Carpet and Rug Institute (CRI) has certified the HD 14/18 to meet its stringent requirements for soil removal, dust filtration and appearance retention.



## Backpack BATTERY AND ELECTRIC

Both NaceCare models, the RSV 130 and RSV 200, are powered by commercial 1.6 hp motors offering over 114 cfm of airflow. They provide a four-stage filtration system that captures 99.97 percent of dust particles to 0.3 microns. Adjustable waist and shoulder straps are designed for maximum comfort and the swivel hose fittings ensure tangle-free operation. It's also available in a battery-powered version for daytime cleaning. The RBV 130 has 45 minutes of run time, weighs 16 pounds and has a quick-change battery.



## Canister HENRY PVR 200

NaceCare provides our industry's quietest vacuums at 47/49 dB. All units have a powerful 1.6 hp vacuum motor with 110 inches of lift and 114 cfm of airflow for excellent soil recovery. Equipped with a Microtex filter and HEPA-Flo bag as standard, they filter down to 0.3 microns at 99.97 percent efficiency. They are available with a variety of tools for carpet or hard floor care and optional electric or air turbo power heads are available for improved agitation.

NaceCare also offers the NBV 180/220 battery canister vacuums for daytime cleaning. Both units have 45-minute run time, 2.5-hour charge time and a quick change-out battery system.



*NaceCare upright and canister vacuums meet the stringent certification requirements for the Carpet and Rug Institute (CRI).*

# DAILY MAINTENANCE

## Spotting Extractors

The GVE 370, with its powerful 1.3 hp vacuum motor and two-year warranty, is ideal for spotting, upholstery cleaning and vehicle detailing. With 100-inch water lift, 95 cfm of airflow and a 30 psi pump, George provides excellent water recovery and won't over-wet fabrics. The 1.6-gallon recovery tank comes with a handy carrying handle for dumping.

The AV 4X and AVB 4X are lightweight and easy to transport. The ergonomic adjustable handle height has a twist grip solution control providing 60 psi of solution.

The 1.3 hp vacuum motor, with 100-inch water lift and 106 cfm of airflow, provides excellent water recovery and the squeegee attachment on the vacuum shoe allows for hard floor cleaning.

Additionally, the AVB 4X is fitted with a heavy-duty cylindrical 600 rpm brush for agitation and superior cleaning results.

The TP 4X has 120" of waterlift making it excellent for carpet spotting and upholstery cleaning. It has a 60 psi pump and comes with an 8' solution/vacuum hose and hand tool, an optional extraction wand and cart are also available.



GVE 370 "George"



AVB 4X



AV 4X



TP 4X

*Shown with optional cart*

Model	GVE 370	AVB 4X	AV 4X	TP 4X
Vacuum Motor	1,000W, 1.3 hp 2 stage	1000W, 1.3 hp 2 stage	1,000W, 1.3 hp 2 stage	1,500W, 2 hp 2 stage
Airflow	95 cfm	106 cfm	106 cfm	106 cfm
Water Lift	100"	100"	100"	120"
Pump: Pressure	30 psi	60 psi	60 psi	60 psi
Pump: Power	30W	70W	70W	70W
Capacity: Solution	1.6 gal.	4.0 gal.	4.0 gal.	4.0 gal.
Capacity: Recovery	1.6 gal.	4.0 gal.	4.0 gal.	4.0 gal.
Cleaning Width	4"/ 10.5"	4" / 11"	11"	4"
Weight	19 lbs.	46 lbs.	29 lbs.	27 lbs.
Power Cord	42'	33'	33'	33'

# INTERIM



DP 340



Clean right to the edge of walls

## DUPLEX Replace Bonnet Cleaning From restorative to interim with a low-moisture solution

Clean virtually any floor surface: carpet, grouted floors and ceramic, rubberized floors and even escalators are no obstacle for the Duplex. Simply fill the solution tanks and squeeze the trigger to feed cleaning solution onto the twin counter-rotating brushes. The conveyors recover the dirty water, depositing it in the central recovery tank, or you can choose to double scrub the area and pick up the water later.

The brushes work right to the edge of the machine and into difficult areas. With its unique 800,000 bristles counter-rotating at 780 rpm, the Duplex is a carpet cleaner's dream for both high-traffic restorative cleaning and situations requiring low-moisture interim maintenance. It's virtually impossible to over-wet a carpet using the Duplex, and carpets will dry easily in under 30 minutes.

It replaces bonnet cleaning as the mainstay in any interim carpet-maintenance program. Not only does it do a better job, it's faster! Brush options include two grades of black brushes for aggressive scrubbing. Grey is the standard all-purpose brush and yellow is for sensitive carpet areas.



DP 420

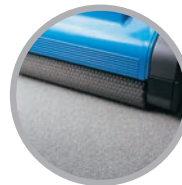


Optional escalator kit for the DP 420

Model	DP 340	DP 420
Cleaning Path	11"	14"
Solution Tank	1.1 gal.	1.6 gal.
Recovery Tank	0.75 gal.	1 gal.
Brush Speed	780 rpm	780 rpm
Brush Pressure (Max)	48 lbs.	57 lbs.
Brush Motor	1000W/1.3 hp	1000W/1.3 hp
Power Cord	35 ft.	35 ft.
Weight	48 lbs.	57 lbs.



Profiled Rubber and Ceramic



Carpet



Escalator



## Walk Behind Extractors AV 18AX

With large 18-gallon tanks and a 3/4 hp drive motor, the Avenger AV 18AX can tackle even the biggest commercial job. Other key features include rotationally molded polyethylene tanks and an easy-access removable spray bar with twist-off jets. The powerful 1.8 hp, three-stage vacuum motor provides 135-inch water lift and 95 cfm of airflow while the 130 psi pump allows for a variable flow rate up to 1.2 gpm.

With the optional patented onboard "Smart Kit," the pump can be used as an automatic pre-spray system with the chemical injected downstream (of the pump) so only water flows through it, preventing any buildup. The Smart Kit ensures no mixing of chemicals is required and the dilution is always correct. It also allows the unit to be used in "low-flow mode" for interim cleaning and faster drying times.

Its efficient forward motion allows upwards of 4,000 sq. ft. per hour to be cleaned, three times the rate of pullback self-contained units, while the lockdown vacuum shoe ensures consistent pressure and excellent soil recovery at all times.



AV 18AX



### MODEL

### AV 18AX

Vacuum Motor	3 stage, 1.8 hp
Airflow	95 cfm
Water Lift	135"
Brush Motor	100W / .13 Hp
Brush Speed	600 rpm
Drive Motor	0.75 hp
Cleaning Width	20"
Pump Type	diaphragm w/bypass
Weight	143 lbs.
Power Cord	50'

Capacity: Solution	18 gal.
Capacity: Recovery	18 gal.
Pump: Power	100W
Pump: Pressure	130 psi
Pump: Flow	0-1.2 gpm

Shown with optional Smart Kit



AV 18SX

## Walk Behind Extractors AV 18SX

The large 18-gallon tanks and the efficiency of a forward-moving machine enable it to tackle even the biggest commercial jobs. The upper and lower tanks detach for easier transport and the easy-access removable spray bar has twist-off jets. The powerful 1.8 hp, three-stage vacuum motor provides 135 inches of water lift and 95 cfm of airflow while the 130 psi pump provides 1.2 gpm of flow. The spring-loaded vacuum shoe is adjustable, ensuring consistent pressure and pickup on different carpet thicknesses and uneven floors. For hard floors, the carpet shoe is easily substituted with an optional squeegee.

With the optional patented onboard "Smart Kit," the pump can be used as an automatic pre-spray system with the chemical injected downstream (of the pump) so only water flows through it, preventing any buildup. The Smart Kit ensures no mixing of chemicals is required and the dilution is always correct. It also allows the unit to be used in "low-flow mode" for interim cleaning and faster drying times.

Cleaning at a rate upwards of 4,000 sq. ft. per hour, nearly three times that of standard pull-back extractors, and with less operator fatigue make the AV 18SX an outstanding choice. Optional features include the Smart Kit, hard floor squeegee and HT 1800 in-line heater.

### OPTIONAL HARD FLOOR SQUEEGEE FOR MODEL AV 18SX

Simply remove the carpet shoe, fit the squeegee attachment and lower the brush housing to the lowest position to enable cleaning of your hard floor surfaces.



#### MODEL

#### AV 18SX

Vacuum Motor	1400W, 1.8 hp, 3 stage
Airflow	95 cfm
Water Lift	135"
Brush Motor	100W / .13Hp
Brush Speed	600 rpm
Cleaning Width	20"
Weight	140 lbs.
Pump Type	diaphragm w/bypass

Pump: Power	100W
Pump: Pressure	130 psi
Pump: Flow	0-1.2 gpm
Capacity: Solution	18 gal.
Capacity: Recovery	18 gal.
Power Cord	50'

## Quiet Walk Behind Extractors AV 12QX

Running under 60 dB, the AV 12QX is an excellent choice for any 24-hour facility, especially in the hospitality and health-care industries. The AV 12QX is constructed of polyethylene and features a 130 psi pump providing a flow rate up to 1.2 gpm. The powerful 1.8 hp, three-stage vacuum motor provides 135-inch water lift and 95 cfm of airflow. The spring-loaded vacuum shoe is adjustable, ensuring consistent pressure and pickup on different carpet thicknesses and uneven floors. For hard floors, the carpet shoe is easily substituted with an optional squeegee.

With the optional patented onboard “Smart Kit,” the pump can be used as an automatic pre-spray system with the chemical injected downstream (of the pump) so only water flows through it, preventing any buildup. The Smart Kit ensures no mixing of chemicals is required and the dilution is always correct. It also allows the unit to be used in “low-flow mode” for interim cleaning and faster drying times.

Cleaning at a rate upwards of 4,000 sq. ft. per hour, nearly three times that of standard pull-back extractors, and with less operator fatigue make the AV12 QX an outstanding choice. Optional features include the Smart Kit, hard floor squeegee and HT 1800 in-line heater.

### OPTIONAL HARD FLOOR SQUEEGEE FOR MODEL AV 12QX

Simply remove the carpet shoe, fit the squeegee attachment and lower the brush housing to the lowest position to enable cleaning of your hard floor surfaces.

*Shown with optional Smart Kit*



AV 12QX



#### MODEL

#### AV 12QX

Vacuum Motor	1,400W, 1.8 hp, 3 stage
Airflow	95 cfm
Water Lift	135"
Brush Motor	100 W / .13 hp
Brush Speed	600 rpm
Cleaning Width	20"
Pump Type	diaphragm w/bypass
Weight	121 lbs.
Power Cord	50'
Sound Level	60 dB(A)

Pump: Power	100W
Pump: Pressure	130 psi
Pump: Flow	0–1.2 gpm
Capacity: Solution	12 gal.
Capacity: Recovery	12 gal.



AVB 9X

## Pull-Back Extractor AVB 9X

With a sound level of only 60 dB, the AVB 9X can be used in even the most sensitive areas. It is constructed of rotationally molded polyethylene and features a 130 psi pump providing a flow rate of 1.2 gpm. The powerful 1.8 hp, three-stage vacuum motor provides 135-inch water lift and 95 cfm of airflow.

The AVB 9X is well balanced and easy to use; the 16-inch brush ensures it can handle the toughest of jobs. The high water lift motor provides excellent water recovery; in most cases carpets can dry in less than one hour. The float shut-off ensures water never reaches the vacuum motor and the five jet spray bar provides a consistent spray pattern with no streaking.

Brush pressure is fully adjustable for different types of carpet and the powerful brush motor ensures excellent agitation. The water flow rate is variable, allowing for low-moisture or full restoration cleaning. The AVB 9X truly is the market leader in pull-back extractors.

### MODEL

### AVB 9X

Vacuum Motor	1,400W, 1.8 hp, 3 stage
Airflow	95 cfm
Water Lift	135"
Brush Motor	90W, .12 hp
Brush Speed:	600 rpm
Cleaning Width	16"
Pump Type	diaphragm w/bypass
Weight	95 lbs.
Power Cord	50'
Sound Level	60 dB(A)

Pump: Power	100W
Pump: Pressure	130 psi
Pump: Flow	0-1.2 gpm
Capacity: Solution	9 gal.
Capacity: Recovery	9 gal.



# RESTORATIVE

## Tempest® Box Extractors

Our Tempest box extractors are lightweight and easy to transport. Constructed of rugged polyethylene, the upper and lower tanks detach into two separate units for easier transport.



**TP 8X**

At only 49 lbs., the TP 8X is light and easy to transport, yet has all the power of a full-size extractor. With its 130 psi pump and 20-foot vacuum and solution hoses, the TP 8X is ready to tackle even the largest of jobs.



*Shown with optional Smart Kit*

**TP 18SX**



*Shown with optional Smart Kit*

**TP 18DX**

Both the TP 18SX and TP 18DX are premium extractors featuring a 130 psi pump with 1.2 gpm of water flow. Their 18-gallon polyethylene tanks are designed to clean large areas. The SX has 95 cfm of airflow and the DX is equipped with 212 cfm. Both units come complete with a 20-foot solution/vacuum hose and a three-jet wand.

MODEL	TP 8X	TP 18SX	TP 18DX
Vacuum Motor	1,500W, 2 hp 2 stage	1,400W, 1.8 hp 3 stage	2-1,000W, 1.3 hp 2 stage
Airflow	106 cfm	95 cfm	212 cfm (max.)
Water Lift	120"	135"	100"
Pump: Type	diaphragm w/bypass	diaphragm w/bypass	diaphragm w/bypass
Pump: Pressure	130 psi	130 psi	130 psi
Pump: Flow	1.2 gpm	1.2 gpm	1.2 gpm
Pump: Power	100W	100W	100W
Capacity: Solution	8 gal.	18 gal.	18 gal.
Capacity: Recovery	8 gal.	18 gal.	18 gal.
Weight	49 lbs.	92 lbs.	95 lbs.
Power Cord	33'	33'	33'

# RESTORATIVE



TP 18SX-HP



HT 1800 Heater

## Tempest® High Pressure Box Extractors

For the professional carpet cleaner, the TP 18SX-HP features a 400 psi piston pump with 1.25 gpm of flow and large 18-gallon tanks. With the patented onboard “Smart Kit” as standard equipment, the pump can be used as an automatic pre-spray system with the chemical injected downstream (of the pump) so only water flows through it, preventing any buildup.

The TP18SX-HP’s 1.8 hp, three-stage vacuum motor provides 135-inch water lift and 95 cfm of airflow, ensuring excellent soil recovery and faster drying times. The onboard storage of hoses and wand plus detachable tanks provide easy transport from job to job. It comes complete with a 20-foot solution/vacuum hose and a three-jet wand.

### OPTIONAL HEATER

Available for TP 8X, TP 18SX, TP 18SX-HP, TP 18DX, AV 12QX AV 18AX and AV 18SX models, the HT 1800 in-line heater conveniently mounts to the rear part of the machine. The heating element has an operating and hi-limit thermostat for safety. Water can be heated in-line; however, higher temperatures can be achieved with the pre-heating function.

MODEL	TP 18SX-HP
Vacuum Motor	1,400W, 1.8 hp 3 stage
Airflow	95 cfm
Water Lift	135"
Pump: Type	dual piston w/bypass
Pump: Pressure	400 psi
Pump: Power	180W, 0.25 hp
Pump: Flow	1.25 gpm
Capacity: Solution	18 gal.
Capacity: Recovery	18 gal.
Weight	176 lbs.
Power Cord	33'

MODEL	HT 1800		
Power	1,800W		
Voltage	120V, 50/60Hz		
Power Cord	50'		
Dimensions:	L-4.3" / W-6.3" / H-13.3"		
Weight	14 lbs.		
Temperature	160° F (max.)		
Pre-heating	8 gal.	12 gal.	18 gal.
15° F Increase	7 min.	10 min.	15 min.
In-line heating	Hand tool	3-jet wand	
Temp	114° F	100° F	50% flow
	76° F	66° F	75% flow
	57° F	50° F	100% flow

# CHEMICAL

## Pre-Spray Smart Kit

The Smart Kit is an option for the TP 8, TP 18SX/DX, AV 12QX, AV 18SX/AX and is standard on the TP 18SX-HP. Heavily soiled areas such as traffic lanes, pivot areas in front of elevators and entrances require additional chemical dwell time to emulsify and loosen compacted soil. The Smart Kit uses the extractor pump to dispense an onboard chemical through a 33-foot pre-spray hose and heavy-duty spray wand. The Smart Kit applies the traffic lane cleaner consistently and uses 50 percent less labor than conventional hand pump-up sprayers or electric sprayers.

## Chemicals Just For Carpet

NaceCare Solutions Just For Carpets is a multi-use carpet chemical formulated to meet the cleaning requirements for the new generation of synthetic carpet construction and delicate wool fibers. This neutral pH chemistry is especially designed for extraction, encapsulation, bonneting and traffic lane cleaning and it is safe to use on wool carpets. It has outstanding soil-removal qualities and won't leave a sticky residue that can cause rapid re-soiling. Just For Carpets meets sustainability requirements, using low VOCs, no dyes, no perfumes and safe surfactants.

- Twin Cylindrical Brush Encapsulation: Dilute 8 oz. per gallon
- Traffic Lane Cleaner: Dilute 8 oz. per gallon
- Extraction: Dilute 2 oz. per gallon

## Just For Spots

Just for Spots is a water-based general spotter formulated to remove 90 percent of most spots in carpets. This ready-to-use, 32 oz. bottle is safe to use for general spot cleaning without harming carpet fibers or causing re-soiling. Simply apply onto a spot and blot with a white terry cloth towel or remove with a spotting machine or extractor.



Pre-spraying with our Smart Kit

AVI2QX w/Smart Kit



Just For Carpets



Just For Spots



Just For Grease

## Just For Grease

Just For Grease is a safe, easy-to-use product for removing grease and oil-based stains from carpet. It is effective on paint, oil and grease without the dangers associated with harsh solvents and volatile organic compounds (VOCs). It is conveniently packaged in a 32 oz., ready-to-use bottle. Simply apply onto a spot and blot with a white terry cloth towel or remove with a spotting machine or extractor.



Recognized for Safer Chemistry [www.epa.gov/dfe](http://www.epa.gov/dfe)

Just for Carpets and Just for Spots formulations are certified by the Carpet and Rug Institute (CRI) and meet sustainability requirements for the EPA Designed for the Environment (DfE) stewardship program.

ORDER CODE 231916



1205 Britannia Road East,  
Mississauga, Ontario, L4W 1C7  
1.800.387.3210 TOLL-FREE  
1.800.709.2896 FAX  
[www.nacecare.com](http://www.nacecare.com)



# ADVANCING VACUUM TECHNOLOGY

NEW 2015 NaceCare Vacuum System





# NaceCare Vacuums

## Advancing Vacuum Technology

NaceCare is significantly improving the industries leading **Canister and Backpack** programs;

- By recovering 20% more soil.
- By reducing energy consumption over 40%.
- By reducing noise levels
- By doubling motor life - your machines will now last twice as long.



## Recovering 20% More Soil Means

- Cleaner buildings and higher cleaning standards
- Improved carpet appearance
- Better Indoor Air Quality (IAQ)
- Longer carpet life (asset preservation)
- Improved cleaning due to better vacuum performance
- CRI approved and LEED-EB compliant



## Reducing Energy Consumption by 40% Means

- A more sustainable approach to cleaning
- Reduced energy costs with no negative effects on cleanliness or carpet appearance





## Reducing Noise Levels Means

- Better for the building occupants with less interruption
- Permits more areas to be daytime cleaned, even more sustainable
- **Canister vacuums are now 47/45 dB(A) from 49/47 dB(A)**
- **Backpack vacuums are now 52 dB(A) from 65 dB(A)**



## Increasing Motor Life to 2000+ Hours Means

- Longer machine life and less down time
- Lower cost of operation
- The current motor life of an upright is 500 - 800 hours
- The current motor life of a canister and backpacks is 700 - 1000 hours
- **Our motor life is in excess of 2000 hours**
- **Our motor warranty is 5 years\***

*Behind every great vacuum....  
is a great motor!*

## Other Improvements Coming in the New Year.

- The tapered hose provides the convenience and ease of use of a 1 1/4" hose with the performance and lack of clogging of a 1 1/2" hose.
- Standard on all rewind, backpack and battery vacuum models is our new ergonomic ratchet wand that adds up to 6" in length.
- Our new floor tool program improves performance, productivity and ease of use.

\*Please see the NaceCare warranty policy for full details

# Dry Vacuum Specs

2014 Dry Vacuum Specifications  
 2015 Dry Vacuum Specifications

PRODUCT NAME	PSP 200 / 380	PSP 200 / 380	PVR 200 / 380 / 390	PPR 200 / 380 / 390	RSV 130 / 200	RSV 130 / 200
<b>Motor</b>	<b>1200 Watt, 1.6 HP</b>	<b>680 Watt, 0.9 HP</b>	<b>1200 Watt, 1.6 HP</b>	<b>680 Watt, 0.9 HP</b>	<b>1200 Watt, 1.6 HP</b>	<b>680 Watt, 0.9 HP</b>
Stage / Speeds	2 Stage / 2 Speed	1 Stage / 1 Speed	2 Stage / 2 Speed	1 Stage / 2 Speed	1 Stage / 1 Speed	1 Stage / 1 Speed
<b>Motor Life</b>	<b>1000 - 1100 hours</b>	<b>2000 + hours</b>	<b>1000 - 1100 hours</b>	<b>2000 + hours</b>	<b>1000 - 1100 hours</b>	<b>2000 + hours</b>
<b>Noise Level</b>	<b>47 / 49 dBA</b>	<b>45 / 47 dBA</b>	<b>47 / 49 dBA</b>	<b>45 / 47 dBA</b>	<b>65 dBA</b>	<b>52 dBA</b>
<b>Soil Recovery</b>	<b>71%</b>	<b>84%</b>	<b>71%</b>	<b>84%</b>	<b>71%</b>	<b>84%</b>
Water Lift	110 inches	100 inches	110 inches	100 inches	115 inches	100 inches
Airflow	115 CFM	120 CFM	114 CFM	120 CFM	114 CFM	120 CFM
Filtration	0.3 Micron @ 98.6%	0.3 Micron @ 98.6%	0.3 Micron @ 99.97%	0.3 Micron @ 99.97%	0.3 Micron @ 99.97%	0.3 Micron @ 99.97%
Power Cord	33 feet	33 feet	33 feet	33 feet	42 feet	42 feet



1205 Britannia Road East,  
 Mississauga, Ontario, L4W 1C7  
 1.800.387.3210 TOLL-FREE  
 1.800.709.2896 FAX  
[www.nacecare.com](http://www.nacecare.com)

